



POSÁZAVÍ

www.posazavi.com



ENGLISH





Contents

Český Šternberk Castle	2–3
PRAK MANOR	4
The Čtyřlístek guesthouse	5
Jemniště castle	6–7
Konopiště castle	8
Ballooning CZ	9
Konopiště**** guesthouse	10
Benešov town	11
Benešov sports centre	12
Hotel Atlas and Benica	13
Lešany military technical museum	14
The Posázavský Pacific	15
Brejlov Mill	16
Hotel TÝNEC	17
BISPORT, Outdoor centre	18–19
THE TRADITIONAL REGION POSÁZAVÍ	20–21
Týnec nad Sázavou town	22
Guesthouse– restaurant Nad Řekou	23
Heroutice Farm	24
Hotel Všetice	25
Stud FAVORY	26
Pyšely town	27
Hotel and restaurant Ve Mlejně	28
Barochov centre	29
Sázava town	30
Sázava cloister	31
Sporthotel Kácov	32
Atrium Golf Club	33
Vlašim town	34
Poblanický Museum	35
Kondrac	36–37
Blaník Farm	38
Farm – park	39
Important contact information	40
Information Centres	41



The Posázaví region is undoubtedly the regional pearl of Central Bohemia, reflecting the unparalleled harmony of natural beauty and the noble display of human achievement. One can feel the unique landscape-forming purpose and art of our predecessors which has been present here right from our very beginnings. The rugged landscape is interlaced with peaks offering ideal conditions for panoramic views into the vast beyond.

The topography here counts twelve middle age castles and strongholds, a multitude of prominent architectonic features – castles, churches, chapels but also a great deal of fine pieces of architecture – crosses, columns of the crucifixion and plastic, forming the charm of this cultural landscape, which, in terms of its uniqueness, is unrivalled in Europe. Luminous, pure, romantically idyllic, sometimes however murky, menacingly roaring, here is where the Sázava river flows to which many legends and tales are pinned, and which since time immemorial, has unmistakably defined the atmosphere of the whole region.

Zdeněk Sternberg



Český Šternberk Castle



When meandering around the Posázaví, don't miss out on a visit to Český Šternberk castle, you will be rewarded with a view of the gothic castle which majestically shoots up to a point over the river Sázava. During the tour around the grounds, you will be able to take a glimpse into the more than seventy year history connected largely to the Sternberg lineage. The castle was founded around 1241 by Zdeslav of Sternberg.

The tour route leads through fifteen rooms rich with stylish furniture and enhanced with a collection of family portraits, porcelain, weapons, hunting trophies as well as silver miniatures. Among the most interesting exhibits, undoubtedly includes a collection of graphic papers dating back to the period of the Thirty Years War.



South of the castle, you will stumble across an outpost bastion, the so-called dungeon. It is part of an ingenious rampart system installed at the turn of the 15th and 16th centuries. From May till the end of August 2011, an exhibition on old-style prams is running at the castle. Aside from historical prams for children from 1860 to 1960, you will also be able to see dolls, period clothing for babies, swaddling clothes, pillows, exhibits of children's bedrooms and pots and pans for dolls.

Opening times:

April, October	sat, sun, public holidays	09:00 – 17:00
May, September	tues – sun	09:00 – 17:00
June – August	tues – sun	09:00 – 18:00

The final tour starts 45 minutes prior to closing time.

The castle is open all year around for pre-booked tour groups.



Hrad Český Šternberk
257 27 Český Šternberk 1
tel.: +420 317 855 101
+420 317 855 166
fax: +420 317 855 118
e-mail: info@hradceskysternberk.cz
<http://www.hradceskysternberk.cz>

YOU ARE INVITED

Would you like to take a peek into the authentic surroundings of the homes of gentry folk from the first house of the last century? If so, then Český Šternberk castle is the right choice for you. Until now it has been inhabited by descendents of the former founder, Zdeslav of Sternberg. If you make it for the last weekend in May along with the children, there will be special tours for them complete with a guide dressed in period costume. And should you wish to learn more, don't miss taking a pilgrimage around Šternberk's history during the penultimate weekend in October – including tours enhanced with play scenes taken from the history of the castle and the life of its residents.



PRAK MANOR Ecological farming



Prak Manor is located nearby Český Šternberk in a place which according to a legend suggests that Jiří z Poděbrad had once slung cannons from this known Central Bohemian castle. The manor has just undergone renovation work and is managed by ecological farming methods. Bovine animals, sheep as well as the largest herd of Lipicky horses in the Czech Republic are bred here.

It's an ideal place for weekend and holiday stays or for company and family events, above all, weddings. Visitors are able to access stylish rooms throughout the year, from May to October on the premises of the restaurant, and during the quiet season, it's possible to order catering on the phone. The farm also offers the opportunity to house horses on the premises of the stables while there is also visitor access to the outside and covered riding halls for you to explore.



Statek Prak
Český Šternberk 47
257 26 Český Šternberk
tel.: +420 603 831 240
+420 603 832 346
e-mail: pavel.tupy@seznam.cz
<http://www.statekprak.cz>

YOU ARE INVITED

Are you looking for an unconventional location for your wedding day? If so then the Prak estate is the right place for you. Are you looking to celebrate entering into the pact of marriage in style among close friends or would you prefer majestic countryside merry-making? Would you like to be able to take off on a carriage around the surrounding area or be benefit from an entertainment programme of some sort? Nothing is impossible – we are here to meet your every need!



Pension Čtyřlístek, Hana Filipová
Šternberské koláče, Jan Filip
Český Šternberk 45
257 27 Český Šternberk
tel.: +420 724 359 073
+420 607 177 944
e-mail: pension.ctyrlistik@seznam.cz

YOU ARE INVITED

You can get to Český Šternberk by car, train, boat or bike. And if you're looking for a spot to take a rest and recharge your batteries after a long journey, why not stop off at our guesthouse, Čtyřlístek. Aside from peace and quiet, typical for the foothills of a small town, we are also proud to offer our very own speciality – poppy seed, curd, apple as well as jam and blueberry cakes!



The Čtyřlístek guesthouse



Offers accommodation in a family guesthouse in the picturesque setting of Český Šternberk village. Right beneath the castle there are three three-bedroom and one two-bedroom rooms available with all fittings and furnishings.

In the morning, you will be woken by the aroma of freshly baked Šternberk cakes wafting from the bakery on the ground floor of the guesthouse space. The bakery forms part of a small shop here selling food, and where you can not only buy cakes but also order them for weddings, family gatherings or just for breakfast. You can then go out into the garden to sample them with a coffee.



Jemniště castle



The Baroque style Jemniště castle was built between the years 1720–1725 and is currently owned by Jiří Sternberg, who lives together with his family in the left-wing of the castle throughout the year.

Romantic engagements, wedding ceremonies and whole wedding day, family gatherings or company events are prepared at Jemniště with much love and attention.

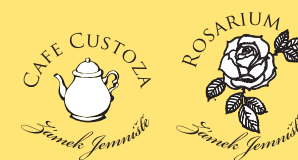
We invite the future spouses into the wedding room furnished with decorations from the Orient as well as of European provenance. We're also happy to report that wedding ceremonies in the rosarium, our large rose garden with a castle are on the increase.



The aroma of dishes using herbs from the castle garden permeate the restaurant area and we are happy to prepare pre-ordered picnic baskets too full of delights to ensure you spend a beautiful day in the stilling pools under our immemorial trees. For the little ones we have prepared a holiday theatre and are looking forward to your visit to meet the jemniště llamas, kangaroos, Kaja the donkey, the goats, parrots, bears, racoons and white peacocks.

Opening times:

January – March	only by prior appointment	
April – May	sat, sun and public holidays	09:00 – 16:30
June, September	daily	09:00 – 17:30
July, August	daily	09:00 – 18:30
October	sat, sun and public holidays	09:00 – 17:30
November, December	only by prior arrangement.	



Zámek Jemniště
Jemniště 1, 257 01 Postupice
tel.: +420 731 903 995
tel./fax: +420 317 796 212
e-mail: zamek@jemniste.cz
sternberg@jemniste.cz
<http://www.jemniste.cz>
<http://www.svatbanazamku.cz>

YOU ARE INVITED

Welcome to our newly renovated cafe Custozza which unites the historical castle surroundings with the original concept of serving delicious home-made desserts decorated with roses from Jemniště rosarium. Enjoy our sweets which not only look great but also smell of roses. Take a walk in our rose garden and find out the name of each rose, its colour or who cultivated it.





Konopiště castle



The original impregnable gothic fortress Konopiště was founded 700 years ago. In conjunction with a change in proprietor's, so too changed the look of Konopiště castle. In 1887 it was purchased by the archduke, František Ferdinand d'Este, subsequently heir to the Austro-Hungarian throne. After marrying the Czech countess, Žofie Chotkova, the castle became the home of the archduke family.

Once within the rich interior of the castle, you can admire rare collections dominating the space, the so-called Estenský armoury station which ranks among the largest in Europe. The large trophy hall is testimony to František Ferdinand's passion for hunting who, during his life time, managed to kill almost 300.000 animals. A glimpse into the private apartments of the successor's family also offers a unique opportunity.



YOU ARE INVITED

When visiting the castle taking a tour around the Rose garden or an evening tour with a guide in period costume are must-do activities. Why not make use of the pleasant seating and sample some of the local speciality cuisine in the new Castle restaurant located in the courtyard of the castle? This year the castle will welcome a new bear who is sure to become a firm favourite for all visitors, above all children. The castle is open from 1st April until 17th November daily apart from Monday.

Reserving tours:
tel.: +420 274 008 15-6
e-mail: rezervace@stc.npu.cz
<http://www.zamek-konopiste.cz>

Zámek Konopiště
Konopiště 1, 256 01 Benešov
tel.: +420 317 721 366
+420 602 349 068
e-mail: konopiste@stc.npu.cz
<http://www.zamek-konopiste.cz>
<http://www.stc.npu.cz>



Ballooning CZ

The view from a balloon offers not only an unusual picture of Konopiště castle but also the captivating landscape and its surroundings. Balloon flights can reach heights of up to 500 meters, moving in the direction of the wind which according to the height changes course. Once on the ground, and having been welcomed with a toast and handed a gift certificate, we will ensure transport for you back to where you started. There is no age limit to this activity.

When do we fly? We fly from April to October only in favourable weather conditions i.e. without signs of rain in view for a minimum of 5 kilometres and a wind speed of up to 4 m/s. We set off in the morning up to two hours after sunrise or in the evening up to two hours after sunset.

Where do we fly to? Above all around the picturesque landscape surrounding Konopiště castle, around 40 kilometres south of Prague. When purchasing, we're also naturally open to arranging a different starting point for you.



YOU ARE INVITED

Jiří Vokál, owner of Ballooning CZ as well as pilot of the hot-air balloon with 30 years of experience with flying across almost the whole world, warmly invites you to comprehend the magic of balloon flying. If you are looking for an original present or unusual experience, ballooning could be the solution for you. Motto: What we offer is a small adventure but what you actually get is more.

Ballooning CZ, s.r.o.
Jiří Vokál
Na Vrcholu 7
130 00 Praha 3
tel: +420 603 337 005
tel/fax: +420 222 783 995
e-mail: ballooning@ballooning.cz
<http://www.ballooning.cz>



Konopiště**** guesthouse



Romance, family relaxation as well as short-term stays for business persons in the heart of the Czech Republic, 20 minutes drive from Prague in the middle of the wonderful countryside in the foothills of the most beautiful castle in Central Bohemia, Konopiště – all of this is offered by the romantic guesthouse, Konopiště****.

The guesthouse is located in the building of the motorcycle museum, managing to combine the historical character of the location with the largest motorcycle museum in the Czech Republic in an original way. The breakfast room is located in a glassed room directly sandwiched between the motorcycle exhibits on display. On request, we're also happy to bring you breakfast to your room. The guesthouse has six apartments, two of which have a discreet entrance away from the reception area. Two apartments also come with a water bed and in the largest apartment "Sen" there is even a Jacuzzi bath.



Pension Konopiště****

Pension Konopiště****
Konopiště 30, 256 01 Benešov
tel.: +420 737 230 297
+420 317 702 658
e-mail: info@pension-konopiste.cz
<http://www.konopiste.eu>

YOU ARE INVITED

Please accept our invitation for a picnic in the countryside- the surrounding area around the hotel is simply made for this. In the vast expanse of Konopiště Park you can definitely find a spot to relax on a blanket in the grass. We will be happy to loan you a picnic basket, filling it with whatever you would like!

We're also happy to organise weddings, honey-moon trips, engagement parties, company teambuilding or other original events.

Benešov town



History lovers will be drawn in by the ruins of the minorite cloister, Na Karlově, the St Nicholas church, piarist residence with St Anne's church, the premises of Konopiště castle or the state room of the heir to the throne, František Ferdinand d'Este at the train station.

The town also offers visitors diverse opportunities for cultural experiences – the musical festivals of The Josef Suk Spring and the Podblanický Musical Autumn or the part theatre performance of professional and local amateur groups in the Town Theatre, Na Poště. In the summer months, the premises of the Konopiště Nature Theatre takes centre stage of the cultural action.



Město Benešov
Masarykovo náměstí 100
256 01 Benešov
tel.: +420 317 754 111
e-mail: mu-bene@benesov-city.cz
<http://www.benesov-city.cz>

YOU ARE INVITED

Are you looking for some kind of unusual cultural or sporting experience? The why not come along to Benešov You can visit one of the most prominent summer music festivals – Sázavafest. If sport is what you are looking for, you may want to head to the Town sports centre. Alternatively the Farmers' markets which take place on the premises of the Ferdinand brewery will surely appeal to both your aesthetics as well as taste buds.





Benešov sports centre



BENEŠOV SPORTS CENTRE is a relaxation complex with the largest selection of sporting activities in the region. In the quiet surroundings on the edge of Benešov town, you will find the opportunity for recreational activities, relaxation and fun. The hotel part comprises 21 two-bedroom, 3 four-bedroom and one five-bedroom space. You can also choose to relax in the whirlpool, Finnish sauna, bio sauna as well as steam room with a salt nozzle. The restaurant Grosso complete with a spacious terrace also offers great cuisine made from home-made pasta.

The sports area comprises 4 tennis courts (two of which are covered), 4 badminton courts, a volleyball pitch, feet volleyball, beach volleyball and five aside football, cardio gym, spinning room, aerobics, gym with a spring floor surface and bowling. All sports centres have modern surfaces and are air-conditioned.



S-CENTRUM
U Vodárny 2215, 256 01 Benešov
tel.: +420 317 750 001
e-mail: info@scentrum.eu
objednavky@scentrum.eu
<http://www.scentrum.eu>

YOU ARE INVITED

Come along to us for some sporting experiences. Come alone, with a group of friends or with your sport's team to play tennis, badminton, volleyball, feet volleyball or five a side football. You can also take part in a variety of regular multicon-tests or come along just to relax and recharge your batteries after a hard day or week.



Hotel Atlas
Tyršova 2063, 256 01 Benešov
tel.: +420 317 724 771
e-mail: info@hotel-atlas.cz
<http://www.hotel-atlas.cz>

HOTEL BENICA PIZZERIA TRATTORIA

Hotel Benica***
Ke Stadionu 2045, 256 01 Benešov
tel.: +420 317 725 614
e-mail: marketing@benica.cz
<http://www.benica.cz>

YOU ARE INVITED

Do you like roaming around history but you don't want to give up your comfort? Come along to us! You will literally have all the sights of the Posázaví region at your fingertips. All that's left is to choose the destination of your trip. A beautiful landscape, countless cultural and natural sights together with the delicious hotel gastronomy don't fail to captivate each and every one of us. We look forward to meeting you!



Hotel Atlas and Benica



The Hotel Atlas is located close by Benešov. Apart from accommodation and a restaurant including a wide offer range, you can also make use of the lounge on the top floor of the hotel. For sport enthusiasts there is also a bowling bar with two lanes, pool and refreshments made according to your heart's desire. We are happy to organise bowling tournaments for closed groups including prizes in the form of trophies and diplomas for winners.

The Hotel Benica is located at the edge of Benešov in the direction of Tábor in close vicinity to Konopiště castle. The renowned restaurant offers international as well as Czech cuisine enriched with Italian specialities including a wonderful original pizzeria. With its five hall spaces, the Benica is a highly suitable venue for organising conferences, seminars, wedding receptions and private parties.



Lešany military technical museum



The area can be found between the communities of Krhanice and Lešany u Týnce nad Sázavou and forms part of the Prague Military Institute. The museum is located on the premises of a former artillery barracks. The exhibitions currently constitute more than 700 historical tanks, canons, motorcycles, armoured, loading and personal vehicles, rocket technology and engineering resources as well as logistical material emerging from 1890 till the modern day.

The museum's technology stretches across ten halls, under six sheds as well as in open spaces. In terms of scale and composition, the collections are unique, ranking among the most significant European institutes of their kind. Each year during the opening and course of the summer season, events are held on the grounds of the Lešany museum including presentations of military technology in movement: May – launch of the season, August – tank day.



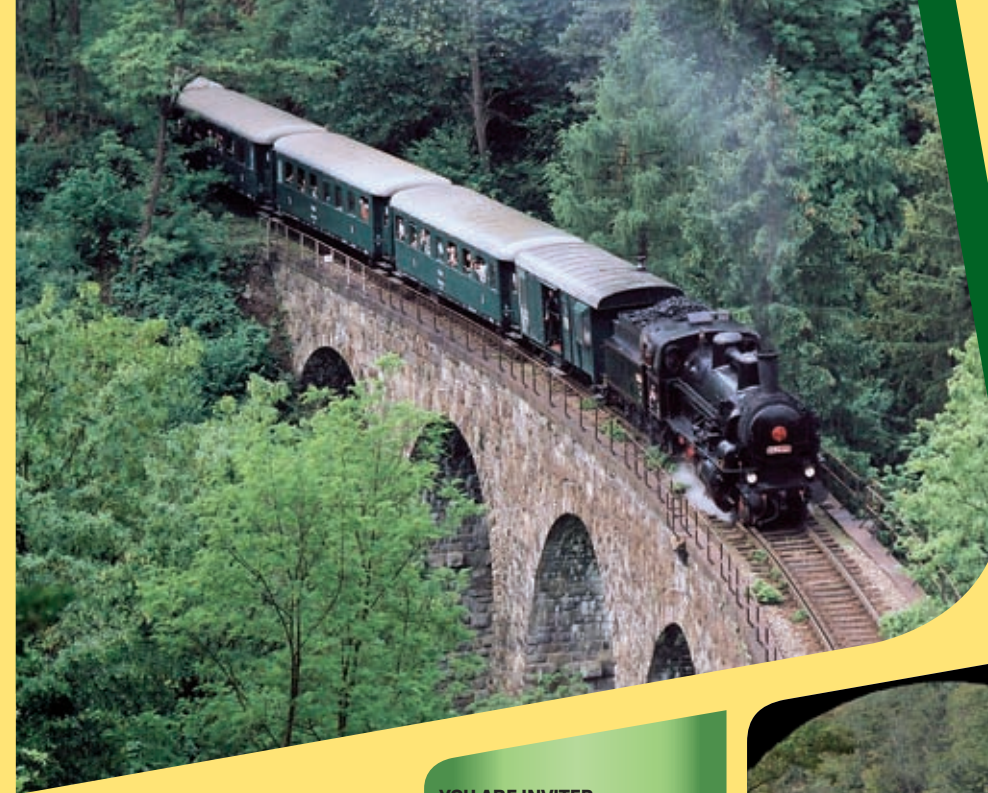
YOU ARE INVITED

Here small boys transform into brave soldiers - at least in their dreams anyway. Their fathers and grandfathers come to remember. Each and everyone however finds their own here, even if the uniforms or cold steel weaponry say nothing to them. You can see the legendary Tatrplán, Jawa 250 "Pérák" as well as the Škoda Tudor here. And if one day just isn't enough for you, you can come again. The museum is open from June till October and is free of charge!



VOJENSKÝ
HISTORICKÝ
ÚSTAV PRAHA

Vojenské technické muzeum Lešany
257 42 Krhanice
tel.: +420 973 226 911
e-mail: museum@army.cz
<http://www.vhu.cz>



The Posázavský Pacific



This legendary railway line from Prague to Světlá nad Sázavou has been running now for more than 100 years and continues to rank among the most sought after transport arteries. It takes you through beautiful countryside along the Sázava river. It acquired this popular name due to young campers who set off on it in search of adventure in the style of the Wild West which they had read about in the books of Jack London and E.T. Seton.

You can travel along this romantic route on several of the regular personal trains as well as a significant number of excursion carriers pulled, above all, by historical steam or motor locomotives.

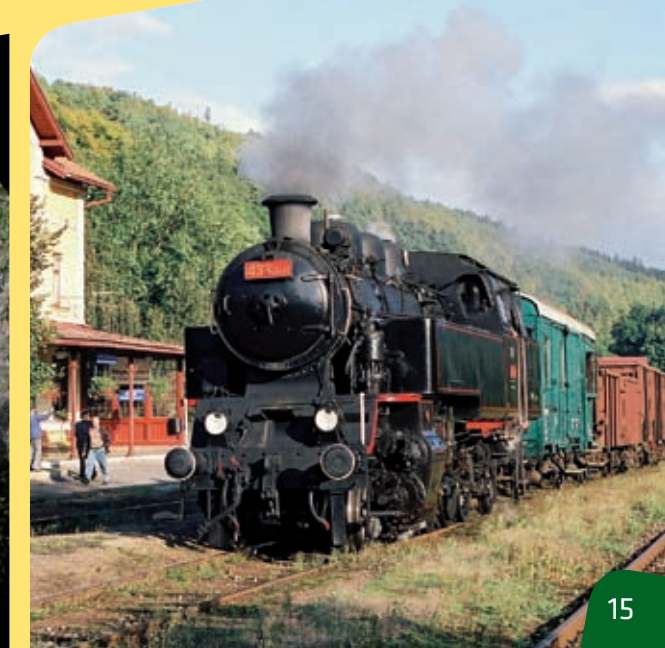
České dráhy, a.s.
tel.: +420 972 228 101, +420 972 241 629
e-mail: pavlik@zst.cd.cz, leंबरk@kod.cd.cz
<http://parnijizdy.ic.cz>



Posázavský Pacifik, o. s.
Havlíčková 445, 257 22 Čerčany
tel.: +420 317 776 518
e-mail: posazavsky.pacifik@seznam.cz
<http://www.posazavsky-pacifik.cz>

YOU ARE INVITED

Are you longing to go back a hundred years in time and experience the magic of riding a historical train with clouds of steam wafting over your head? Then take a seat on the Posázavský Pacific train! It will transport you across enchanting countryside with forested canons and jagged cliff edges, across stone bridges arching over romantic valleys and through dark tunnels. It can take you to sights and museums, camps and guesthouses or simply just from villages to towns. It will always reliably carry you back home again.





Brejlov Mill



You can find the Brejlov Mill in the charming landscape of the Sázava river bank, 30 km from Prague. It is the perfect place to relax, as a venue for your wedding or another celebration for sport recreation but also all kinds of training, teambuilding and outdoor activities.

The third floor of the hotel has three fully furnished training rooms. On the second and third floors there are 55 beds with two-bedroom to four-bedroom rooms with their own bathroom facilities. The garden has seven huts, each of which has its own bathroom and five beds. There is also an onsite car park, volley and feet volleyball pitch, large fireplace, place for your bike and a jetty to leave your boats.



Mlýn Brejlov
Břežany 29
257 41 Týnec nad Sázavou
tel.: +420 774 443 854
e-mail: katerina@brejlov.cz
<http://www.brejlov.cz>

YOU ARE INVITED

Brejlov is capable of appealing to all of your senses. To spend time here and not sample our amazing cuisine would be a big mistake. Especially since you will be in the hands of the co-creator of the well-known TV show, Prima vařečka. Why not try for instance the "Brejlovský hambáč" or the "Posázavský blboun" local specialities and there'll be yet another reason to return!



Hotel TÝNEC
Klusáčkova 2
257 41 Týnec nad Sázavou
tel.: +420 317 729 050
+420 775 290 032
e-mail: ic@centrumtynec.cz
<http://www.centrumtynec.cz>

YOU ARE INVITED

Allow yourself to be carried away with musical tones and become the king or queen of our dance floor at least for a while – you won't find a match to it anywhere close by. Come along to have fun with your family or friends. And should one evening or day not be enough, feel free to stay longer. The pleasant hotel will guarantee a comfortable overnight stay. All services, including an information centre are all only a stone throw's away!



Hotel TÝNEC



The hotel Týnec is a traditional cultural house located in the Posazavi area which brings together a community room, restaurant, bar and club into one historical building. It has recently started also offering accommodation in modern rooms with their own bathroom facilities. The main hall has a capacity for 500 with tailor-made technical support provided by our staff organising balls, school graduation events, company parties, seminars, general board meetings and conferences, concerts as well as theatre productions, lectures and fashion shows.

We see it as a priority to offer a bespoke service including the arranging of entertainment programmes. The closed garden offers the opportunity to organise concerts, ceremonial parties, Sunday gatherings listening to music or just short-term relaxation. Catering services are also available for all occasions.





BISPORT Outdoor centre

willingness • reliability • tradition



Water excursions

- › the most amazing rapids right outside our doors
- › stable, break-resistant polytherene canoes, kayaks, rafts
- › offer of excursions to the Sázava, Hron, Lužnice, Vltava, Ohři, Berounka and Otava – transport equipment for free
- › fresh information daily about water conditions, maps, kilometrage
- › Bonus: Magical Sázava, Fairytale Sázava, Water sprites from Posázaví, A river beaming with sunshine and trophy for the champion helmsman



BISPORT
Ing. Fr. Janečka 511
257 41 Týnec nad Sázavou
tel.: +420 317 701 460
+420 317 701 704
+420 317 701 907-8
+420 777 335 618
e-mail: info@bisport.cz
<http://www.bisport.cz>
facebook: Bisport Outdoorové Centrum

YOU ARE INVITED

Lovers of adrenaline sports, active sportspeople, the brave and daring looking for unusual experiences and fans of water sports looking to spice up their trip along the Sázava, listen up! You are invited to our high ropes park Bisport. You can carry yourself on a rope over the humming river and conquer two floors of obstacles over several meters above ground. Come to overcome your fears or just to take in the beautiful view of the river from the tree tops.



Mountain bikes

- › quality mountain bikes
- › wide offer of cycle routes in the surrounding area.

Cable car park

- › two cable cars over the river
- › 16 obstacles over two floors directly above one another

Sports programmes

- › company events, school trips
- › offers for travel agencies
- › group programmes, teambuilding and activity combination
- › tailor-made activities, programme packages, water activity school
- › option of creating a programme according to your needs





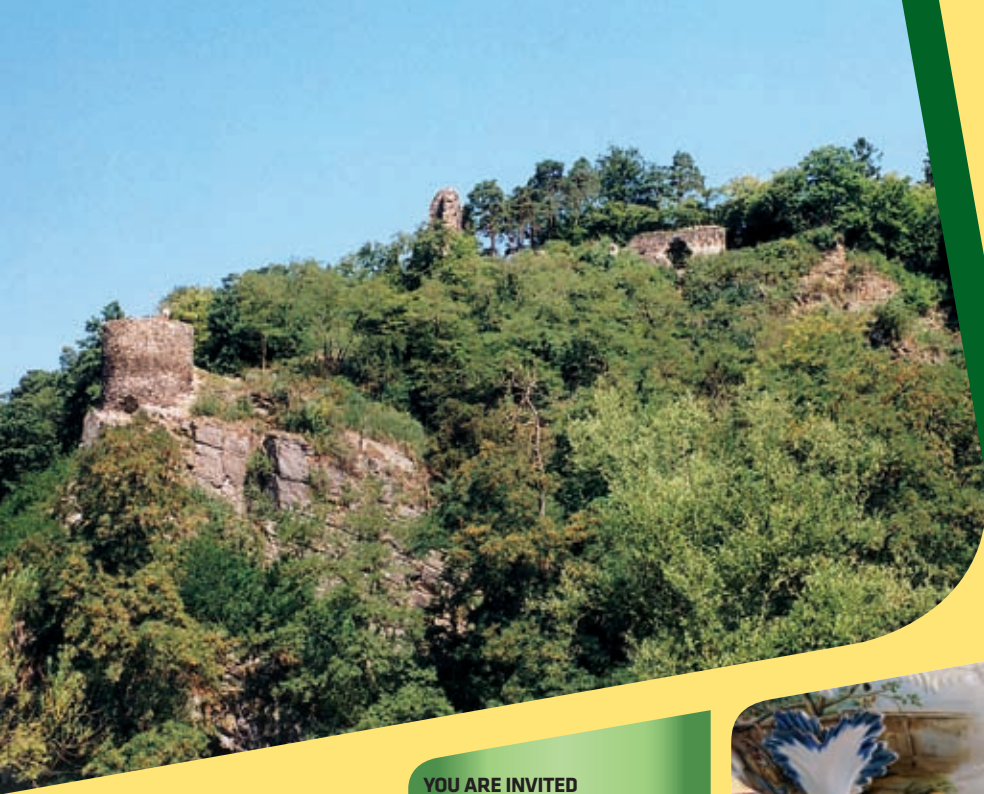
Motorcycle and technical museum Netvořice, Motorcycle museum Konopiště

- | | | | | |
|------------------|--------------|------------|-------------------------------------|------------|
| Swimming pool | Internet | Massage | Seminars | Volleyball |
| Bowling | Horse riding | Museum | Weddings | WiFi |
| Cycling | Cafe | Restaurant | Accommodation | Canoeing |
| Cyclists welcome | Conferences | Fishing | Suitable for families with children | |
| Golf | Rope park | Sauna | Whirlpool | |



THE TRADITIONAL REGION POSÁZAVÍ





Týnec nad Sázavou town



A mixture of pulsating barrages, rocky hillsides, bubbling rapids, bellowing putlogs of the Posázavský Pacifik and the omnipresent feature of camping. Among the most sought after tourist destinations include the stone Roman rotunda from the 11th century or the watch tower in the prismatic Gothic tower from the 13th century which is the summer residence of the protected large mouse-eared bat. Inside Týnec castle you will find a museum with a rare exposition of the Týnec stoneware.

The jewel of this town is the circular First Republic villa belonging to the industrialist, Ing. František Janeček, one of the founders of the former JAWA motorcycle manufacturing plant. The 14th century ruined castle Zbořený Kostelec is also worth a look. Once upon a time it had been protected as a trading path across the Sázava river, the establishment of which also involved the Czech King, Václav II.



Město Týnec nad Sázavou
<http://www.mestotynec.cz>

YOU ARE INVITED

A visit to Týnec nad Sázavou doesn't have to be limited to learning about its history. It also offers a rich cultural calendar of events. Regular events include the nationwide dance competition for the town of Týnec, a brass band show and regular dance afternoon with a brass band, summer theatre scene for children and musical evenings on the outside premises of the castle. Don't miss out on the town historical festivities of the Týnecký střep, the European night of bats or the Celtic evening at the castle!



Guesthouse- restaurant Nad Řekou



Located in Týnec nad Sázavou right on the popular water and cycle routes, just 30 km from Prague. There are seven two-bed rooms with the option of an extra bed as well as food served throughout the day.

The guesthouse also includes a restaurant with an original Italian oven for pizzas. You can also try various Czech as well as international cuisine specialities. The menu is also enriched with grilled dishes prepared directly on the outside terrace.

Sports enthusiasts can also take advantage of the boat and bike rental service as well as pay a visit to the new high ropes park.



Pension - restaurace Nad Řekou
Ing. Františka Janečka 511
257 41 Týnec nad Sázavou
tel.: +420 608 888 900
e-mail: info@hotelnadrekou.cz
<http://www.hotelnadrekou.cz>
facebook:
Hotel Nad Řekou v Týnci nad Sázavou

YOU ARE INVITED

Come and sit for a while on our new summer terrace. Feast your eyes on the romantic view over the "golden" Sázava river. Stop for a while with friends for a glass of wine or sample some of our grilled specialties. In the summer season we also prepare hearty breakfasts for tourists who aren't staying at our guesthouse.





Heroutice Farm



A private riding school in wonderful natural surroundings offering individual trips all year around both for a whole week as well as just weekend recreational stays including horse ride training sessions. Advanced riders can take advantage of one-day or two-day horse riding trips around Posazavi, we also organise specialised events in jumping and dressage with top trainers. The farm specialises in working with children offering training camps all year around including both theoretical as well as practical sessions riding horses.

The premises provide accommodation for 60 people in two to four-bedroom rooms and new apartments, a stylish restaurant for 60 people with a summer terrace and two new seminar halls. Outside seating is also available with a fireplace, grill and dancefloor. The glory of the farm is a covered riding hall with platforms and racing parameters where races regularly take place along with competitions.

YOU ARE INVITED

Should you like horses or the stir and excitement that accompany them at races, you should come along to take a look at several of the sporting jousts. If you'd rather get to know a quiet place alone among grazing horses, to ride with them around the beautiful countryside, collect a basket of mushrooms or just sit by the fire while ensuring your complete care and comfort – arrange a visit to Heroutice outside of the racing dates! We are here waiting just for you!



Farma Heroutice
Miloslav a Jana Perníčkovi
Heroutice 11, 257 56 Neveklov
tel.: +420 317 741 392
+420 604 232 834
fax: +420 317 741 399
e-mail: heroutice@heroutice.cz
<http://www.heroutice.cz>



Hotel Všetice



Hotel Všetice is part of the Všetice estate located in the neighbourhood of the same name, roughly 35 kilometres south of Prague. The premises include a covered driving hall with an inside sand riding house and heated platform for viewers. The hotel offers 43 beds in two to four-bedroom stylish rooms and apartments. When extra beds are used, it's possible to increase the capacity to a total of 49 beds.

Fully furnished conference spaces are also available as well as a community room and two smaller spaces. Beside the hotel there is also an outdoor terrace, dancefloor and stage for concerts. The expansive garden with two ponds makes for the ideal location for organising company as well as family events.

Hotel Všetice

Státek Všetice

Hotel Všetice
Všetice 6
257 44 Netvořice
tel.: +420 724 522 758
e-mail: hotel@vsetice.cz
<http://www.vsetice.cz>

YOU ARE INVITED TO

Would you like your wedding day to be truly unforgettable? Then come and spend it with us! In the pleasant stylish surroundings of the restaurant or the wide outdoors of the park, we will help you celebrate your special day with family and friends, not to mention make your marriage vows. Wedding apartments are free for newlyweds.





Stud Favory



Lies directly in the heart of the former manor of the Archduke František Ferdinand d'Este, in the attractive Baroque estate of Benice. Children are always welcome guests in Benice. They are donkey and pony rides to go on, opportunities to take part in summer camps focusing on riding, taking a look at the small zoological garden or just coming along for a fairytale. Each year in the summer the Hřebčín courtyard transforms into an amphitheatre filled with actors and jugglers.

The unique three-winged building of the manor, built in 1750 and recorded among cultural sights, offers a range of opportunities for relaxation and refreshments. And all of this in the country spirit. The kitchen managed by Radek Šubrt, renowned from the TV show, Tescoma s chutí uses traditional homemade Czech ingredients.

YOU ARE INVITED

Come along to learn about a unique Czech cultural sight – the Kladrubský white horse. This typical Czech breed was cultivated by Rudolf II for ceremonial purposes of the Kaiser's court. There aren't any more than a thousand Kladrubský horses in the world while you can see tens of them here with us. Let yourself be allured into taking a carriage tour pulled by either two-pair or four-pair of these noble animals!



Hřebčín FAVORY
Benice 1, 257 44 Netvořice
tel.: +420 724 054 267
e-mail: hrebcin@favory.cz
<http://www.favory.cz>



Pyšely town



Pyšely lies in the picturesque region of central Posázaví, just south of Prague. Its history began to be properly written already in the 11th century. As of the 19th century, the small town has been a much sought after location for recreation. It has been visited by a range of known personalities including Eliška Krásnohorská, Josef Lada, Václav Špála, president Tomáš Garrigue Masaryk also travelled here. The dominant feature of Pyšely is the Baroque I Loretánský chapel of our Virgin Mary built in 1699. Also worth a look is the church of the raising of the Holy Cross and the late Baroque parish.

The redesigned square is home to the Pyšely museum with an exhibition focusing on the town's history. Pyšely has a rich cultural-social life and you can find a summary of events on the town's website in the Pykulka column.



Městský úřad Pyšely
nám. T. G. Masaryka 4
251 67 Pyšely
tel.: +420 323 647 218
e-mail: urad@pysely.cz
<http://www.pysely.cz>

YOU ARE INVITED

You don't need to travel to Prague to go to the theatre. Performances by many professionals are also delivered by members of our voluntary group. The merits of success are not only harvested at home but also during excursion shows. Come and find out for yourselves paying a visit perhaps to their Bartered Bride performance!





Hotel and restaurant Ve Mlejně



Welcome to Ve Mlejně located in a little town by Benešov, just fifteen minutes drive by car from Prague. You can also come here by boat along the romantic Sázava. We offer pleasant surroundings, good food and rooms with a view to the humming dam – all services available for fans of rock climbing as well as random passers-by.

The original mill was built at the end of the 17th century but hasn't served as such for more than 60 years. These days it houses a stylish restaurant with outdoor seating and a hotel with a capacity for 70 people, the largest of its kind in the region. On top of this, there is a large community room to fit 130 people as well as a small hall suitable for private gatherings for family or friends.

YOU ARE INVITED

Are you tired and hungry from the journey. There's nothing easier than stopping off in our pub. Your mood will soon be positive and your stomach enticed with copious amounts of food. A sure favourite is the enormous grilled pork neck.

Hotel a restaurace Ve Mlejně
Městečko 27
257 22 Čerčany
tel.: +420 777 234 888
<http://www.vemlejne.eu>



Areál Barochov
Barochov 7
251 67 Pyšely
tel.: +420 721 110 000
e-mail: info@arealbarochov.cz
<http://www.arealbarochov.cz>
www.facebook.com/arealbarochov

YOU ARE INVITED

Come along to Barochov for a fun-packed day of adrenalin jumping across tree tops. Let yourself be pulled into the action of computer games and live the fate of one of its heroes for yourself. Gather up your courage and come along to play with us! Or do you prefer the peace and quiet offered by our natural surroundings? We will convince you that the view from a horse's back is the most beautiful in the world.



Barochov centre



The Barochov centre is an outdoor and recreational area situated in the middle of a meadow, pastures and forest not far from the Sázava river. It offers activities for the whole family from children to adults all day long.

Try to overcome your fears in the high ropes centre over tree tops. At a height of 6-10 metres above ground, there are a total of 40 different obstacles. For children there's a special rope tour for little ones. Or alternatively allow yourself to be petrified with an action fighting game, the Battlefield Live, completely new to the Czech Republic. On the other hand your romantic side will most certainly appreciate an outing riding a horse or a lesson with an instructor available both for beginners and advanced students. After a tough day, we will be happy to look after you in our cosy countryside-style guesthouse.





Sázava town



Sázava is above all linked to the life of the Czech patron Saint Prokop. Until recently people believed that its history didn't begin until the Middle Ages however archaeological finds have discovered that there was human presence on the territory of the town already during the period of the Agricultural Age.

Among prominent personalities of the Sázava included František Kavalír, founder of the former glassworks. The restorer of the Slavic Sázava, Peter Method Klement, a Sázava pastor also worked here. The playwright, poet and actor, Jiří Voskovec was born here later also spending time here. In his honour the local theatre group has organised a competition show of amateur dramatics called Voskovec's Sázava.



Národní památkový ústav
správa kláštera v Sázavě
Zámecká 72
285 06 Sázava
tel.: +420 327 321 177
e-mail: sazava@stc.npu.cz
<http://www.klaster-sazava.cz>



Sázava cloister

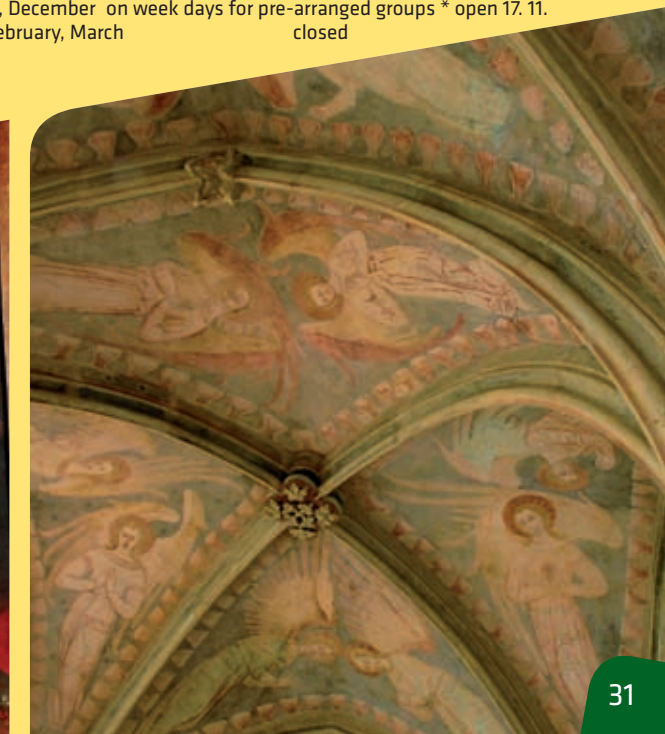
This was founded in 1032. The exposition entitled "Saint Prokop's Sázava" tells the life story of the Czech national patron saint Prokop and the thousand year long history of his cloister. In the north garden of the cloister you can find exposed foundations of the church of the Holy Cross from the 11th century, once inside the convent you will see a rare capitular hall dating back to the 14th century. In 2007 a rich Baroque and Gothic fresco adornment piece was discovered in the hallway of the cloister.

Opening times:

April	sat, sun, public hols	10:00 – 17:00 (last tour at 15:30)
	Week days only for pre-booked groups	
May	tues – sun	10:00 – 17:00 (last tour at 15:30)
June	tues – sun	10:00 – 18:30 (last tour at 17:00)
July, August	tues – sun	10:00 – 18:45 (last tour at 17:15)
	* also open on Monday 4. 7.	
Sept	tues – sun	10:00 – 17:00
October	sat, sun, public hols	10:00 – 17:00 (last tour at 15:30)
November, December	on week days for pre-arranged groups	* open 17. 11.
January, February, March		closed

YOU ARE INVITED

Come along to experience the unforgettable and otherworldly atmosphere of places connected to the holy recluse, monk, abbot and Czech patron, Saint Prokop. Pay a visit to the Vosovka spring where he met with Duke Oldřich, turned water into wine and founded the famous cloister or why not take a walk through the Devil's Trough gorge which according to the legend, Saint Prokop ridged up with the help of the devil harnessed to a plough.





Sporthotel Kácov



This modern three-star hotel with its own car park can be found approximately 55 kilometres south-eastwards of Prague between the neighbourhoods of Tichonice and Kácov. Several meters from the Sázava river, surrounded by forest, you will find everything that you need to spend a pleasant holiday or to organise work or social gatherings.

The hotel premises has 20 two-bed rooms, 1 three-bed, 1 four-bed and 3 apartments.

The premises also offer accommodation in the renovated cabins with its own bathroom facilities as well as four-bed huts which are above all suitable for school groups or sport events. A restaurant, bar and cake shop are also on site.

YOU ARE INVITED

Come along to us for sport and fun, there's absolutely no chance of getting bored! On the premises by the hotel there are two tennis courts with an artificial surface, an outdoor pool with a kid's paddling pool, football pitch and minigolf. In the main building we decided to open a new games area with two bowling lanes, pool, billiards, darts and table football.



Sporthotel Kácov
V Hájků 307, 285 09 Kácov
tel.: +420 317 851 471
+420 774 851 488
fax: +420 317 851 484
e-mail: rezervace@sport-hotel.cz
management@sport-hotel.cz
<http://www.sport-hotel.cz>



Atrium Golf Club



The Atrium Golf Club Trhový Štěpánov (ATRGC) was founded on 22nd July 2006 and already one year later was accepted among the members of the Czech Golf Federation. The short golf course provides players with the opportunity to get to know the sport and its rules better giving you the chance to perfect this short and precise game.

The pitch is open to the public is nine-hole and a par of 62. Several holes have been christened with names inspired by the exotic trees and bushes which have been planted around the pitch. From hole number 7 there is a wonderful view onto the mythical Blaník castle. The length of the pitch for men is 1632 and for women 1420 metres. It's possible to rent out basic golf equipment while help is also available at the beginning with the option of hiring a professional trainer upon request.

YOU ARE INVITED

You don't have to have wads of cash or expensive equipment in order to appreciate the magic of golf. All that is required is a good mood and desire to experience something new. You don't believe us? Come along and find out for yourself that gold isn't a game just for the chosen few. We offer pleasant sport experiences in beautiful surroundings!

Atrium Golf Club
Javorová 306
257 63 Trhový Štěpánov
tel.: +420 602 345 391
+420 602 685 485
e-mail: info@atriumgolf.com
<http://www.atriumgolf.com>





Vlašim town



In 2010 reconstruction work on the historical centre was completed. Its history dates back to 1318 when the castle over the Blanice river is mentioned. In the first over of the 16th century, the St Jilji church was founded. The deanship building and the Old Town Hall bear reference to Baroque style while the former loan office and school building are reminiscent of the 19th Century. Among modern day first republic features include the husite church. In its current form, the square, river banks along with bridge make Vlašim an attractive town for tourists.

In the last third of the 18th century, the Auersperg family founded this natural landscape park by the castle. It was built on the spot of the former enclosure and was occupied with many constructions, sculptures and coves. The part, just like the castle is publically open. In 2008 the Chinese pavilion was made accessible. The old castle and baths have also been reconstructed. Refreshments are also on offer at the park gates dating back to the 19th century.



Turistické informační centrum Vlašim
tel.: +420 317 847 207
e-mail: info@vlasimskypark.cz
<http://www.vlasimskypark.cz>

YOU ARE INVITED

We invite you to a tour of Vlašim which appeals because of its renovated houses, its new roads. Two new public fountains are also of interest. By the entrance to the park you'll come across water spurting from the shape of a marble ball rotating on the cistern. The beautifully maintained Vlašim park with its main entrance in the centre of town can offer the perfect end to your visit.



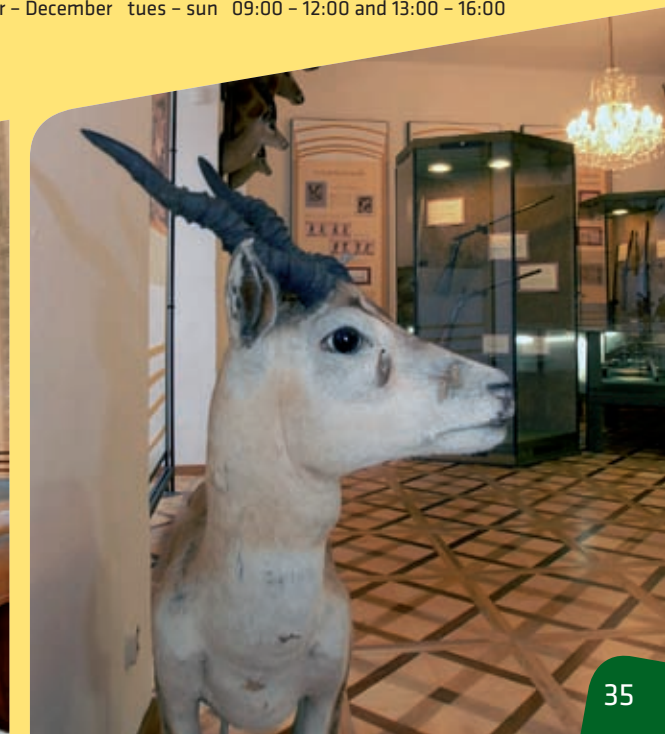
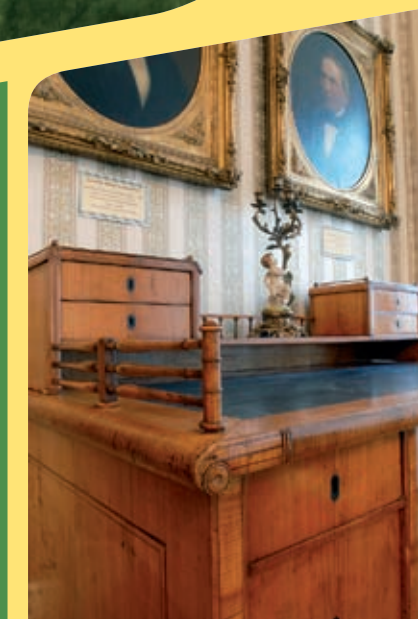
Poblanický Museum

As of 1988, Vlašim castle which has been based inside the Podblanický museum and has another operations running in Benešov and Růžkove Lhotice. A visit to the castle offers the opportunity to view the exposition called castle parks and the history of Vlašim castle. With an exact blade – the tradition of hunting and armoury and the longstanding exhibition of a Mirror to the past.

The whole experience from the visit is amplified by the castle interiors, the chapel, fresco stucco decorated halls and also the large amount of antique, natural and technical exhibits on display. An area of interest is the viewpoint from the castle tower and the possibility of a tour around the castle vault with an installed exposition called Secrets of the vault. Classic concerts, lectures and gallery-style exhibitions are also organised in the castle.

Opening times of the Podblanická Vlašim museum:

March – June	tues – sun	09:00 – 12:00 and 13:00 – 16:00
July and August	tues – sun	09:00 – 12:00 and 13:00 – 17:00
September – December	tues – sun	09:00 – 12:00 and 13:00 – 16:00



Středočeský kraj

Muzeum Podblanická Vlašim
Zámek 1, 258 01 Vlašim
tel.: +420 317 842 927
e-mail: muzeumvlasim@iol.cz
muzeumvlasim@seznam.cz
<http://www.muzeumpodblanicka.cz>

YOU ARE INVITED

You can walk around Vlašim castle from the vault to the tower. The view invites you to view other parts of the town including žižkov square with a fountain knight Roland. From 1936 Vlašim has been home to the world-famous ammunition works, Sellier & Bellot. The table of its co-founder P.D. Sellier can also be seen again and again at the exposition of the Podblanická museum. A new feature is the enhanced set of exotic trophies which brings together the collection of five aristocratic family lines.



Kondrac



The Kondrac village is 5 km southwards of Vlašim. The settlements of Dub and Krasovice which lie on the foothills of the renowned Blaník hill, also known for its various legends. The first mention of Kondrac dates back to 1318 but the current church of St. Bartholomew is already from the 12th century. The surroundings of Kondrac are an ideal place for relaxing and taking a holiday as it's interwoven with cycle routes and tourist as well as educational routes.

During sufficient snow fall a ski lift is also in operation. Visitors may use the services of both hostels. The restaurant here U Matoušků is renowned throughout the region.



Obec Kondrac
Kondrac 12
258 01 Vlašim
tel.: +420 602 388 381
<http://www.kondrac.cz>

YOU ARE INVITED

Would you like to take a look at the erstwhile dwelling of a village pastor? Come over for a visit! You will see an ordinary household with an enormous stove, wooden cupboards, tile stones and an old-fashioned bed. You can smell the bee honey here as well as the laughter of children. You see the parish museum is a living one!



Kondrac lives a rich club life. It was also awarded for this – in 2007 it became the village of the year for the Central Bohemia region and in a nationwide competition round it was awarded second place.

The Parish Museum

In 2010 the Parish Museum was opened in Kondrac which is the first of its kind in the Czech Republic. With its farming tradition, charnel house and Roman church of St. Bartholomew, it offers the authentic interior of a parish from the turn of the 19th and 20th centuries. There is a craft workshop in the main building with the option of producing candles, hand-made paper or painting prints in the period theme of saints.

By the parish there is a herb garden with plants of symbolic religious meaning. It not only includes an area to relax but also a sheep range which undoubtedly previously belonged to the parish farm.





Blaník Farm



Blaník farm belongs to Miloš Zapletal located in Ostrov nearby Vlašim. It emerged from the reconstruction of a former manor which has a three-hundred year old history. It is paradise for children and adults.

The farm offers accommodation for 30 to 50 guests in a small hotel and guest-house, less demanding visitors can make use of the hostel. On the premises there is a conference room, swimming pool, relaxation centre and small stage. There's also an old cellar here - Mutěnická vinotéka.

In the renovated stables there is space for 16 horses – several of them can be taken for horseback riding around the area, for instance also in a carriage. There are 30 ha of land forming part of the premises with horse ranges as well as ranges for other animals.



FARMA BLANÍK

Farma Blaník
Ostrov 1
257 06 Louňovice pod Blaníkem
tel.: +420 602 373 363
e-mail: farma@farmablanik.cz
<http://www.farmablanik.cz>

YOU ARE INVITED

Do you need to take a break from everyday stress? Would you like to spend a pleasant weekend or holiday together with friends or work colleagues. Would you like to experience a true village pig killing, a regular feast, or the animal and farmer's markets. Would you like to organise a wedding or birthday celebration around nature and household animals? Each of your wishes will be fulfilled. What can't be found abroad, you will find here.



Farm – park

The park forms an independent part of Blaník farm and is located beneath the mythical mountain not far away from Vlašim. It refers to premises which are not so well-known in the Czech Republic. Inside families and children can come across a whole range of household and free-running live animals.

There are a range of children's attractions aside from small Blaník hill with outlook tower, cable railway, small caves with doors to the underground, forest of night elves, a lane for riding on children's tractors, a stone maze as well as straw castle.

On the sand tilyard children are able to take pony and horse rides or just observe the sheep running around. A park forms part of the farm – also providing restful romantic zones to take a seat.



**KRAJ
BLANICKÝCH
RYTÍŘŮ**



ASSISTANCE FOR YOUR BICYCLE

Cykloservis J. Břečka, Pražská, Sázava
Cykloport NOVOTNÝ, Jílovská 262, Týnec nad Sázavou
Cyklo Švec, Na Potoce 225, Vlašim
BIKE SPORT 007, Červené Vršky 1594, Benešov
Jízdní kola Kučera, Lidická 1781, Vlašim
Prodej a opravy horských kol, Čerčanská 112, Poříčí nad Sázavou
Sport Šefčík Prodejna LYŽE – KOLA, Ke Stadionu 2095, Benešov
Tomáš Trojáněk, Pavlíkova 1528, Benešov
VELO FOX, Dr. E. Beneše 159, Bystřice
VELO SPORT Krupička, Na Bezděkově 2005, Benešov

TRANSPORTATION



Information on coach Schedule



Information on train Schedule

www.jizdnirady.cz

tel.: +420 317 721 395, +420 900 144 444

tel.: +420 317 757 428, +420 840 112 113

Important contact information

ASSISTANCE FOR YOU

FIRE
BRIGADE
150



AMBULANCE
155



POLICE
158



EMERGENCY
NUMBER
112

SOS

Medical emergency
Rudolf and Stefanie Hospital in Benešov

tel.: +420 317 756 485
tel.: +420 317 756 111



ASSISTANCE FOR YOUR CAR

Verold Benešov, spol. s r.o., Na Červených vrškách 1490, 256 01 Benešov
Servis tel.: +420 317 723 411, SERVIS 24 – ÚAMK tel.: 1230



Information Centres

Information Centre Benešov

Malé nám. 1700, 256 01 Benešov
e-mail: info@benesov-city.cz
tel.: +420 317 726 004

Information Centre Čerčany

Sokolská 28, 257 22 Čerčany
e-mail: info@cercany.cz
tel.: +420 317 776 154

Information Centre Kutná Hora

Palackého nám. 377, 284 01 Kutná Hora
e-mail: infocentrum@kh.cz
tel.: + 420 327 512 378

Information Centre Louňovice pod Blaníkem

Zámek 1, 257 06 Louňovice pod Blaníkem
e-mail: infopodbla@atlas.cz
tel.: +420 317 862 022

Information Centre Mnichovice

Masarykovo nám. 83, 251 64 Mnichovice
e-mail: infocentrum@mnichovice.info
tel.: +420 323 666 311

Information Centre Neveklovsko

nám. Jana Heřmana 83, 257 56 Neveklov
e-mail: info.neveklov@seznam.cz
tel.: + 420 317 741 207

Information Centre Rataje nad Sázavou

Zámecká 1, 285 07 Rataje nad Sázavou
e-mail: infocentrumrataje@seznam.cz
tel.: +420 327 322 169

Information Centre Říčany

Masarykovo nám. 83, 251 01 Říčany
e-mail: jitka.bahenska@ricany.cz
tel.: +420 323 618 142

Information Centre Sázava

nám. Voskovce a Wericha 280, 285 06 Sázava
e-mail: infocentrum@mestosazava.cz
tel.: +420 327 320 763

Information Centre Sedlčany

nám. T. G. Masaryka 32, 264 80 Sedlčany
e-mail: mu@sedlcany.cz
tel.: +420 318 821 158

Information Centre Týnec nad Sázavou

Klusáčkova 2, 257 41 Týnec nad Sázavou
e-mail: ic@centrumtynec.cz
tel.: +420 317 729 050
+420 775 290 032

Information Centre Uhliřské Janovice

Pečírková 168, 285 04 Uhliřské Janovice
e-mail: kic@uhljan.cz
tel.: +420 327 542 197

Information Centre Votice

Komenského nám. 177, 259 01 Votice
e-mail: infocentrum@votice.cz
tel.: +420 317 812 505

Information Centre Zruč nad Sázavou

Zámek 1, 285 22 Zruč nad Sázavou
e-mail: infocentrum@mesto-zruc.cz
tel.: +420 327 531 194

Muzeum Divišov

Šternberská 158, 257 26 Divišov
e-mail: zidmuzeum.divisov@centrum.cz
tel.: +420 317 855 224

Information Centre Jílové u Prahy

Masarykovo náměstí 16, 254 01 Jílové u Prahy
e-mail: info@muzeumjilove.cz
tel.: +420 241 950 791

Information Centre Vlašim

Zámek 4, 258 01 Vlašim
e-mail: info@vlasimskypark.cz
tel.: +420 317 847 207, +420 734 362 091



POSÁZAVÍ

www.posazavi.com



Published by Posázaví o.p.s., Zámek Jemniště 1, 257 01 Postupice
Text Jaroslava Tůmová, Kateřina Pavličová
Photographs Jaroslav Pelíšek, Michaela Wecker, Magdaléna Straková, Václav Pošmurný, archiv Posázaví o.p.s.
Design and production by Pavel Fuksa – GraTypoPrint

PUBLICATION NOT DESIGNED FOR SALE
ISBN 978-80-904655-1-0