


Visit
POSÁZAVÍ



Central Bohemia 

#VisitCzechia



SÁZAVA RIVER

The river originates in Velké Dářko pond and after 218 kilometres it flows into the Vltava River. Approximately 208 kilometres can be navigated from Žďár nad Sázavou to the confluence with the Vltava near Davle. The most attractive parts include the rapids at Stvořidel and between Krhanice and Pikovice.

At the beginning of the 20th century, countryside alongside the Sázava River became a popular tourist destination for its uniqueness and wildness. It includes quiet corners, deep forests, steep rocks, exceptional geological sites, nature reserves... For example, Čertova brázda, Posázavské bučiny (beech-wood), Hornopožárský les (forest) or Medník hill with the presence of rare plant dogtooth violet. Nearby Hradištko with local parts Pikovice, Brunšov and Rajchardov, lying at the confluence of the Sázava and Vltava rivers, is considered the cradle of tramping in Bohemia.



Posázavská trail leads alongside the river, and it is the oldest Czech nature trail. Several-kilometre long stretch between Pikovice and Žampach is considered to be the most interesting part, where the path is in some locations carved in the rock and offers attractive view points, such as Raisova or Klimentova. You can also see the rock formation Pikovická jehla (needle) towering over the Sázava Pacific railway.





BISPORT – WATER ACTIVITIES

Bisport outdoor centre is based in Kácov and Týnec nad Sázavou and here you can rent canoes, rafts and other boating equipment, from Stvořidel to Pikovice. They can organize a boating trip, accommodation and refreshments. One of the main shipyards is located in Kácov. Nearby there is a hostel

with comfortable facilities and a spacious lounge and a camp right by the river. The facilities also include a bistro and a shop with boating equipment open from May to the end of September. Scooters are also available for rent.




If you rent a boat in Bisport in Týnec, you can navigate one of the most beautiful sections of the Sázava River from Týnec nad Sázavou to Pikovice. You can stay overnight in Camp Týnec, in your own or rented tents or in caravans. There are sanitary facilities and refreshments in the bistrobus. Huge inflatable trampoline and a play area are available for children.



www.bisport.cz

 /bisport

 bisport



VLTAVA RIVER

The region around the Vltava River is perfect for wandering and offers beautiful views that never get old. You can experience the region from bird's-eye view from the viewing points Orlík, Štěchovice, Homolka, Vrchovnice, Třeštibok or Zvolská Homole. You can enjoy nature trail Svatojánské proudy, which leads through a rocky canyon on the left river bank; it used to be a dangerous spot for raftsmen and boatmen in

the past - their vessels were threatened by wild currents rolling over the boulders in the riverbed. However, Svatojánské proudy (Midsummer streams) became popular with watermen who began to build dwellings along the river – the first tramp settlement Ztracená naděje (Ztracenka) was established. Today, the Midsummer Streams are below the surface of the Štěchovice Dam.





#MILUJEMETOČENOU (#WELOVESOFTSERVE)

Ice cream stand #milujemetočenou in Davle is an ice cream paradise at the confluence of the Vltava and Sázava rivers. It offers 15 flavours of Italian ice cream daily and a new menu twice a week. Traditional and unusual flavours, delicious Italian coffee and specialities such as Affogato or ice coffee with ice cream. You can also enjoy sparkling / still water directly from the Dolomites. You can relax in sheltered garden (with water mist during summer months), and if you are in a hurry your order can prepared to go.

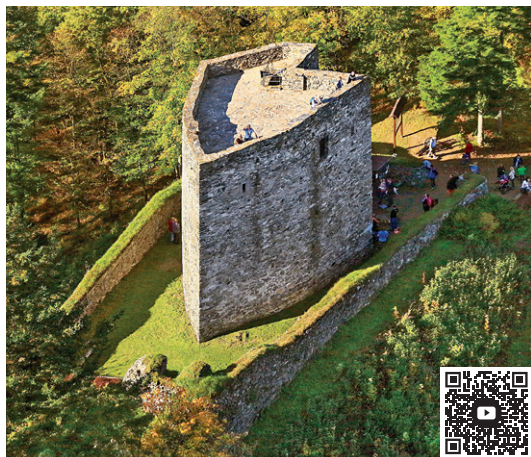
 /milujemetocenou





ČESKÝ ŠTERNBERK CASTLE

The majestic stone mansion located on a rocky promontory above the Sázava River has been in the possession of the Sternberg family for more than 780 years. During the tour, visitors will learn mainly about the last owners and their way of life, because the salons are furnished as their inhabitants used them in the 1st half of the last century. The exhibition includes a unique collection of copperplate engravings from the Thirty Years' War, which is



one of the largest monothematic collections of graphic sheets in Europe. The front bastion of the castle, the so-called dungeon, is also accessible and it offers a beautiful view of the surroundings. The visitors can enjoy more than just classic tours of the castle. Smart and chatty keeper of keys will show the castle salons to the families with children. Enthusiasts will enjoy a guided walk in the castle surroundings. Screenings during the Noir Film Festival, which was first organised in 2021, also form an unforgettable experience.

www.hradceskysternberk.cz







JEMNIŠTĚ CHATEAU

Since 1868, the chateau is owned by the Sternberg family. The current owner, Jiří Sternberg and his family reconstructed the chateau and opened it to the public. The owners also look after the castle park founded in 1725 – they renewed the path system, founded an alpinium, a rosarium, a courtyard of honour and a mini-zoo with parrots, kan-



garoos and llamas. The castle has available three apartments, wellness with whirlpool and sauna and private garden with swimming pool. At Cafe Custozza you can enjoy original home-made desserts. The chateau restaurant is open only for planned gastronomic events, but those interested can order a picnic in the park. The castle shop offers women's fashion brand Hunting Dress Code Petra Sternbergová, original glass jewellery, created by Izabela Sternbergová under the brand Bela, and cushions with various patterns.

www.jemniste.cz

 /sperkybela





KONOPIŠTĚ CHATEAU

The most famous owner of the mansion, founded at the end of the 13th century, probably by Prague bishop To-biáš of Benešov, was Archduke Franz Ferdinand d'Este. He bought the manor in 1887, had the château reconstructed in a historicist style and transformed its surroundings into a landscape park. He founded the Rose Garden with greenhouses and placed his extensive collections in the château. In 1921, Konopiště was taken over by the Czechoslovak state from the archduke's heirs and the château and the park were partially opened to the public.

At present, the château offers seven sightseeing tours, including the private rooms of the Franz Ferdinand d'Este family, the unique archduke's shooting range with mov-

ing and acoustic targets or the Museum of St. George with the largest monothematic collection in the world. The Rose Garden, greenhouses with rare vegetation or a unique cork pavilion are an ideal place for relaxation. A bear named Jirka lives in the castle moat and welcomes the visitors. Adventure trail for children called 'With honey for the bear' leads from Benešov.

Konopiště also hosts special events, such as evening tours of the château and greenhouses or the fruit dumpling festival. Viennese breakfast, afternoon teas and venison soirée can be ordered all year-round. Tours in Václavka Tower offer unusual spectacle.

www.zamek-konopiste.cz



CAFÉ KONOPIŠTĚ

A family business with a long lasting tradition is located in the central car park below the Konopiště Chateau. You can enjoy soups, traditional Czech dishes, coffee with sweet treats, and summer drinks. It also offers regional products, souvenirs and promotional materials with other tips for trips in the region. There is also a charging station for electric cars.

 /cafekonopiste



SÁZAVA PACIFIC

The legendary railway line, which significantly influenced the economic development of the entire Posázaví region, leads from Prague-Modřany through Davle to Světlá nad Sázavou. It became popular mainly thanks to the tramps who set out from Prague on trips to the countryside in the first half of the 20th century. Along the track there are many historical and natural attractions.

The Posázavský Pacifik association looks after the preservation of architectural monuments associated with the legendary railway line for a quarter of a century. Their goal is to renovate and operate historically significant railway vehicles and to reconstruct selected railway buildings. One of them is former water tower „U Sekalů“ in Čerčany, which supplied water to locomotive boilers of steam trains already in the 19th century. The association saved it from demolition and reconstructed it to its original form.

Steam train through Posázaví to Týnec nad Sázavou

Several times a year, Czech Railways organizes a steam train tour to the lower Posázaví region on one of the most beautiful local lines in the Czech Republic. The train departs in

Prague-Vršovice and travels through Davle to Týnec nad Sázavou and back to Prague via Čerčany and Senohraby. Detailed information, including the travel schedule, is available on www.cd.nostalgie.cz.

RETROAUTOMUZEUM STRNADICE

Old cars enthusiasts will enjoy themselves in the Retroautomuseum in the village of Strnadice u Maršovic, 60 km south of Prague. The museum displays over 220 vehicles, mostly manufactured between 1948 and 1989 in Czechoslovakia and other countries of the former Eastern Bloc.

The exhibition also includes vehicles imported to Czechoslovakia by foreign company Tuzex and a collection of small-series vehicles from the turn of the 80s and early 90s of the 20th century. You can also see the historical station of the former police department, an exhibition of period toys, a kitchen, a functional telephone booth, a newspaper stand and the oldest T3 tram in the Benešov district. There is also a period buffet and the possibility of pedal cart rides.

www.retroautomuseum.com



SVĚT ŠKODEVEK (THE WORLD OF ŠKODA CARS)

The unique car museum is located at road no. 109 between the villages of Poříčí nad Sázavou and Čerčany. It represents one of the largest private collections of Škoda cars. The most interesting exhibits include original racing and track specials, which form the largest comprehensive collection of sport Škoda cars worldwide. These include, among others, Škoda Popular Special Sport from 1934 or the championship Škoda 130 RS of the Enge-Vojtěch-Šenkýř crew. In addition to the motor-sport section, prototypes (such as Škoda 720 and 761, which did not make it into serial production) and utility versions of Škoda cars are also displayed. The exhibition also displays old driving school classroom with period simulators. There are also limousines used by prime ministers and presidents.

The Museum of Škoda cars is barrier-free, includes a pleasant relaxation area with a café and a children's playroom, as well as an outdoor playground with monkey bars.

www.svet-skodovek.cz





MILITARY TECHNICAL MUSEUM LEŠANY

www.vhu.cz

It is part of the Military History Institute in Prague. It was built in the former artillery barracks between the villages of Lešany and Krhanice. It consists of extensive exhibitions with more than 700 historical tanks, cannons, motorcycles, armoured, truck and passenger vehicles, rocket technology, engineering equipment and logistics material dating from

1890 to the present. Visitors can search the secrets of the Czechoslovak historical military technology several times a year through traditional exhibition events, such as the Tank Day or Children's Day. The museum is accessible free of charge.



Army Museum Žižkov

It is located in Žižkov district in Prague in the historical buildings of the Liberation Memorial, which underwent a general reconstruction in 2018–2022.

The new exhibitions map the military history of the Czech territory from its beginnings to the present day in seven separate parts, and considerable space is also devoted to Czech statehood.



Aviation museum of Kbely

It was founded in 1968 on the premises of the historical military airport Prague-Kbely and presents the history of Czechoslovak and Czech aviation, especially military aviation. It is one of the largest aviation museums in Europe.

National Memorial to the Heroes of the Heydrich Terror

It was found in the crypt of the Church of St. Cyril and Methodius in Resslova Street in Prague, where the paratroopers were

hiding after the assassination of Reinhard Heydrich in 1942. The room in front of the crypt displays an exhibition dedicated to Operation Anthropoid.





JÍLOVÉ U PRAHY

The royal mining town of Jílové u Prahy was founded in the 13th century and its rich past is closely connected with gold mining. It attracted the famous alchemist Edward Kelley, who owned the local Coin house. The oldest building in the city is the Church of St. Adalbert from the 13th century which includes a unique slab altar.

The dominant feature of the square is the town hall with a preserved municipal jail. Local attractions also include the Church of Corpus Christi from the 14th century or the Chapel of St. Wenceslas.

www.zlatemestojilove.cz



REGIONAL MUSEUM IN JÍLOVÉ U PRAHY

The museum focusing on gold is located in a house called Mince (Coin), where the royal mining office was located in the Middle Ages. The visitors can see the most extensive exhibition specialising in the history of gold mining and processing; you can also try gold panning in the courtyard. You can also use visualization to transfer to the Benedictine monastery in Ostrov at Davle, set out on an educational Journey to the Prehistory of the Jílové Region or return to the roots of tramping and visit the lower Posázaví countryside. The new exhibitions areas invite everyone to sit by the campfire or on the veranda of the stylish log cabin, read topical magazines, play games on touch screens, play tramp songs and learn a lot of interesting facts about campers. As a tip for an unusual trip, the museum also offers tours of the former gold mining adits of St. Joseph, St. Anthony of Padua and Halíř, which are administered by the museum.

www.muzeumjilove.cz



Lookout tower Pepř

A nice view of the town and its surroundings is from the lookout tower on the hill Pepř near Jílové. The steel truss structure has a viewing platform at a height of 18 meters.



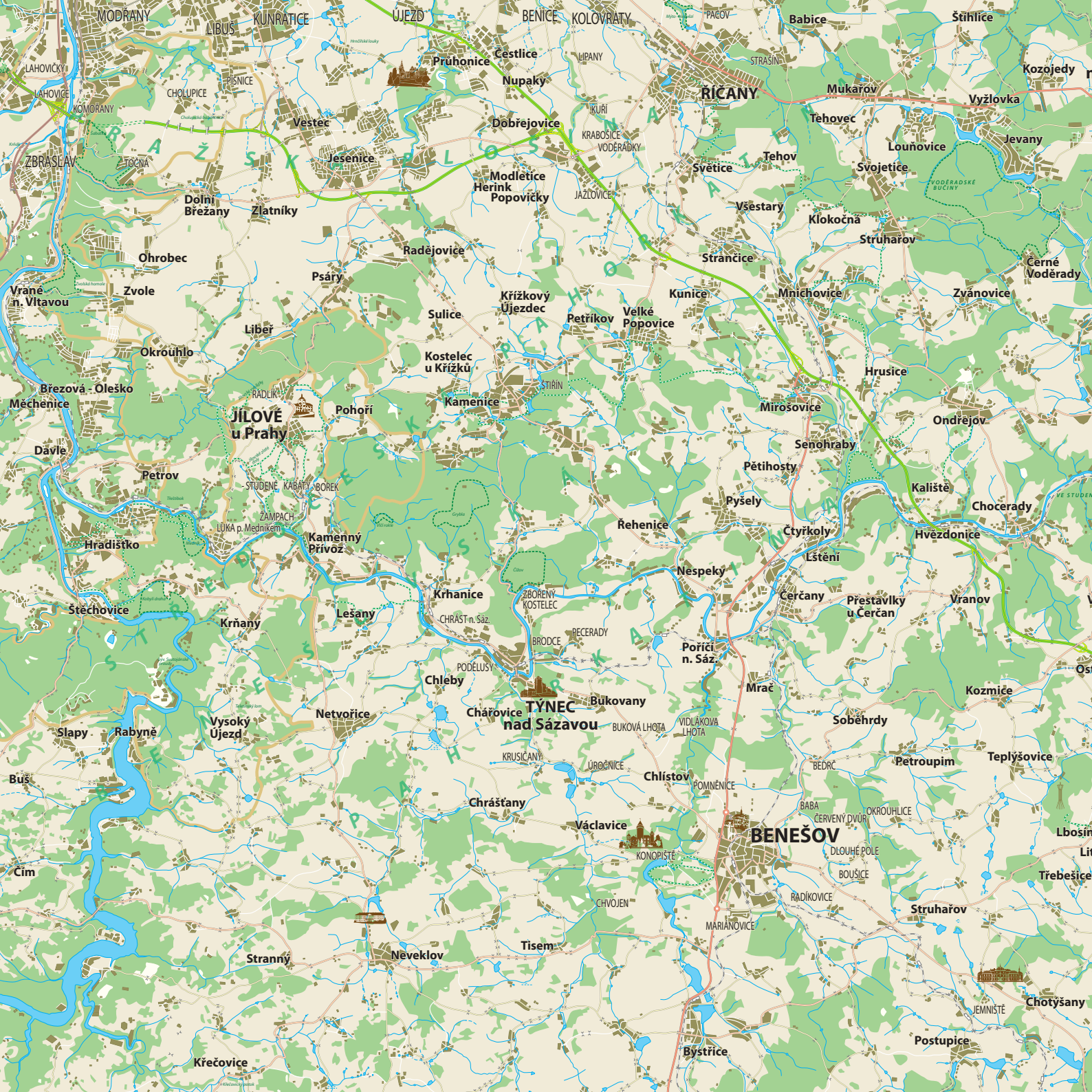
The rock formation Boží skála also offers a nice view, which is one of the stops of the Jílovské vyhlídka (viewing) circuit. Nearby hill Dábel near the village of Petrov includes a marked geometric centre of Bohemia.

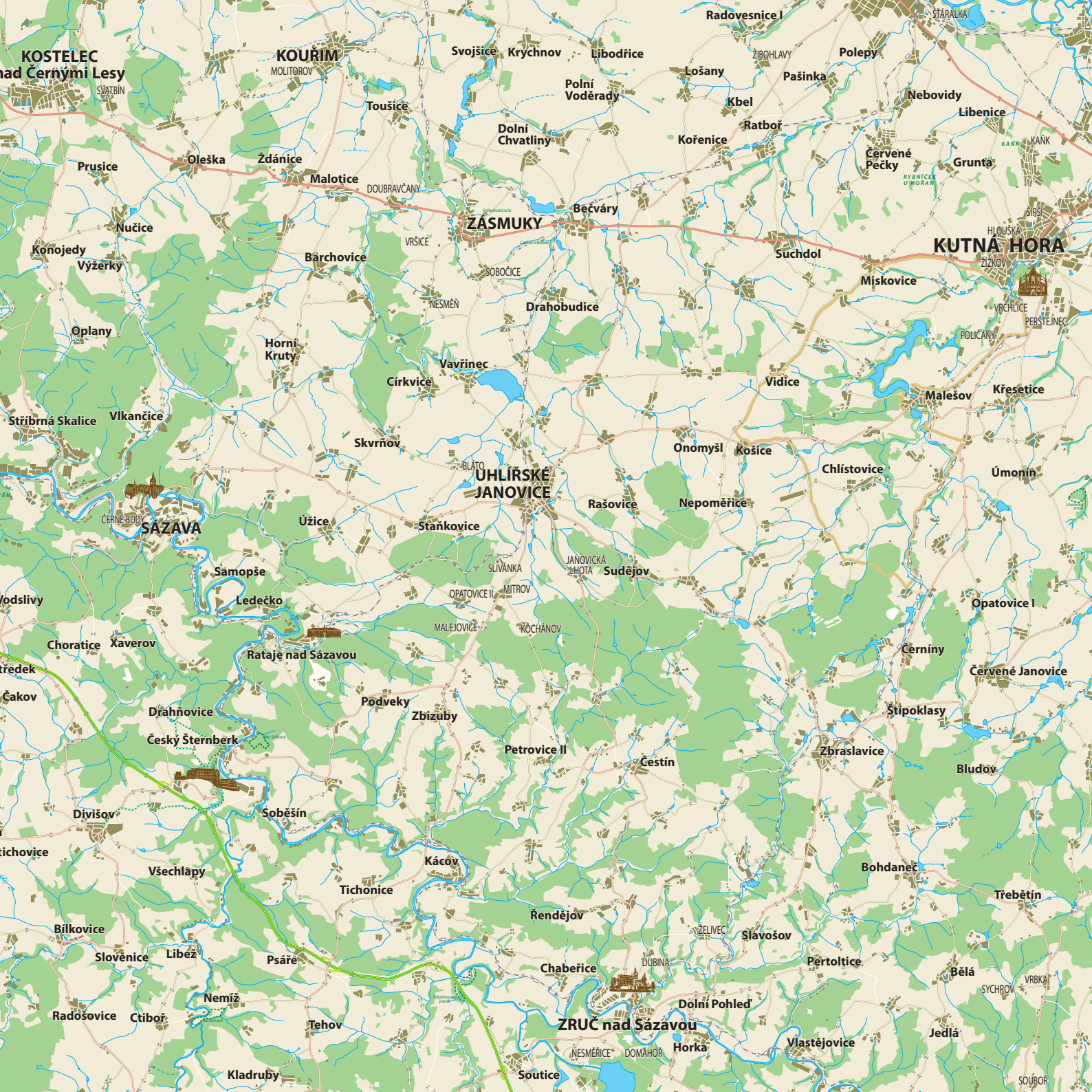


Žampach Bridge

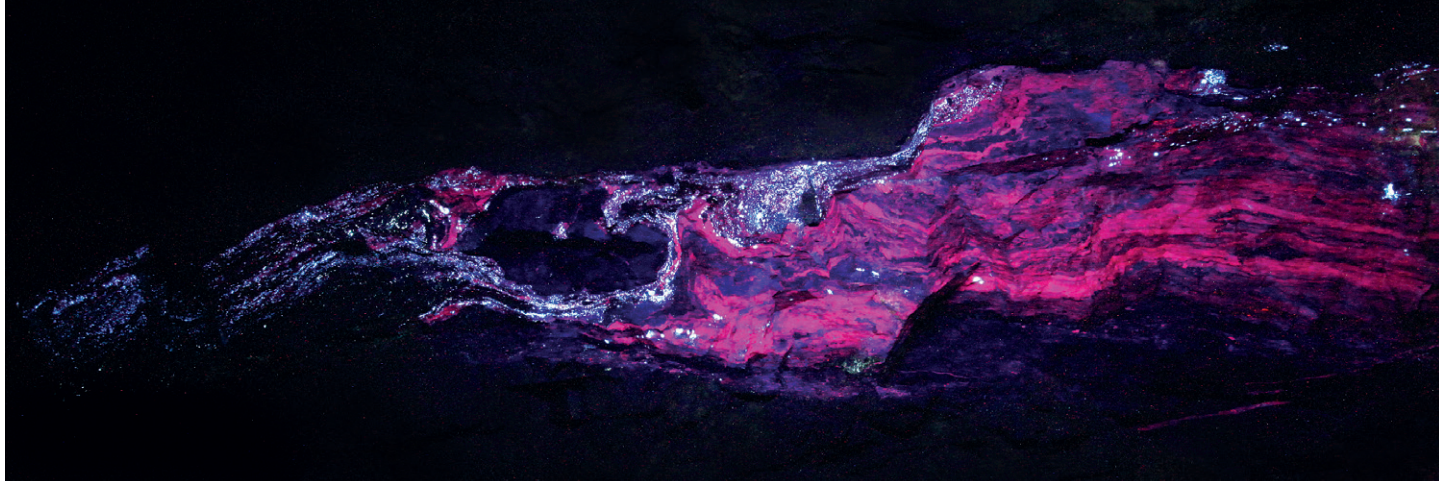
The bridge is one of the highest and oldest stone railway bridges in Central Europe.

At a height of 41.5 meters, it spans over the Kocourské valley between the Jílové town parts of Žampach and Studené. It is 110 meters long and lies on the railway line of the legendary Posázava Pacific between the stops Jílové u Prahy and Luka pod Medníkem.









JÍLOVÉ GOLD MINES – VÁCLAV ADIT

One can enjoy an authentic experience of an active mine. There are no concrete paths so visitors may get dirty. During the 4 km route partly take by a mine train, one can see various workplaces with mining machines in operation and experience a blast in the underground. The adit is probably the only place in the world where visitors can see rich gold ore -

a vein of quartz with visible gold. Almost 3-hour long tour can be arranged after booking in advance. From 2024, the unique mine Via ferrata will also be available – a secured ascent to the largest stope 70 m above the level of the entry adit.

www.jilovskezlatedoly.cz



DOLNÍ BŘEŽANY

The settlement of Závist near Dolní Břežany, which is a national cultural monument, was once the largest Celtic settlement in Bohemia. A lookout tower was built on its acropolis in 2021, it was designed by architect Martin Rajniš.

For those interested in history, an unconventional museum exposition is available in the premises of the Regional Information Centre CELTIC OPPIDUM ZÁVIST in Dolní Břežany, which includes ZÁVIST CAVE – a multi-projection device for the visualization of historical scenes. Visitors can also see



parts of the oppidum Závist in virtual reality – using glasses or a touch screen with interactive elements. Elements of virtual archaeology also include two outdoor sightseeing circuits that follow the museum exhibition.

Other places of interest in the village include Hradišátko. It is a remnant of an early medieval hill fort. The village also includes a number of small historical monuments, such as the monument of Vítězslav Hálek or the sculpture of Calvary. Persons interested in architecture can take a walk along the local architectural circuit, which presents interesting buildings awarded in architectural competitions. Public spaces are regularly decorated with art and over time a very interesting collection of contemporary sculpture art was created.

In June 2015, the modern history of beer brewing in Dolní Břežany began and the modern Oliva Brewery was opened.



LASER CENTRES ELI BEAMLINES AND HILASE

The laser centres in Dolní Břežany cooperate with the world's most prestigious research institutes. They regularly open their gates to the public.





CAMPING OASE PRAGUE

The camp with a restaurant is located on the southern outskirts of Prague between the villages of Zlatníky and Libeň. It offers accommodation in own tents, campers and equipped mobile homes. Guests have access to quality facilities including a washing machine, clothes dryer and dishwasher. Due to its facilities – outdoor and indoor pool, playground, trampolines, indoor playroom, air-hockey, table football, go-carts, cableway... – the camp is an ideal choice for holiday with

small children, and families can also spend a special weekend here. During the high season, children can enjoy local kids club 3 times a day.

www.campingoase.cz







PRŮHONICE

A popular tourist destination in Pruhonice is the Dendrological Garden, administered by the Silva Tarouca Research Institute for Landscape and Ornamental Gardening. It was established in the mid-70s of the last century on an area of 73 hectares. Over 10,000 species and varieties of woody plants, perennials and bulbs from different parts of the world grow here.

It includes the most important collection of rhododendrons, ornamental apple trees, lilacs and tawlans in the Czech Republic.

www.dendrologickazahrada.cz

PRŮHONICE PARK AND CHATEAU

The natural landscape park with an area of 250 hectares was founded in 1885 by Count Arnošt Emanuel Silva Tarouca. He used the rugged valley of the Botič stream and its tributaries Dobřejovický and Zdiměřický streams and the park composition was based on masterfully chosen views. He alternated stands of domestic and exotic trees, groups of trees and shrubs with meadow areas, ponds, streams and their blind branches. The local collection of rhododendrons numbering around 8,000 pieces is exceptional. The result of his life's work is a masterpiece of landscape work that has been recorded in the UNESCO World Heritage List. A castle is located on a rocky promontory above the Botič stream, which flows through the park. It includes, among other things, the exhibition „Průhonice Castle and Park, a Work of Nature and the Human Spirit“ and the Natura Gallery focusing on exhibitions of contemporary art.



www.pruhonickypark.cz





AQUAPALACE RESORT PRAHA

The most entertaining aquapark in Central Europe is located in Čestlice near Prague. It will ensure fun, adrenaline and relaxation for the whole day. The three palaces offer pure enjoyment for all water enthusiasts. They can choose from more than 21 slides and water slides. Lovers of virtual reality will certainly appreciate the flight through space on the MAGIC TUBE water slide, visitors to the Coral Dome can relax while observing the underwater life in giant aquariums, the little ones will enjoy a lot of fun in the new children's paddling pool. There is also a wide range of entertainment programs and laser shows.

Aquapalace Praha is not only about water attractions, it also includes the largest Sauna World in the Czech Republic with 19 saunas and warming rooms and many other relaxation activities.



The most popular area is the Log Cabin Bulb with original sauna ceremonies and a novelty is the ZEN sauna. The SPA & Wellness centre provides relaxation in the form of massages, beauty treatments or just stays in special relaxation rooms.

Aquapalace Resort Prague also offers comfortable accommodation in a 4* hotel with more than 200 rooms. It includes, e.g. pirate apartments.

www.aquapalace.cz



MYŠLÍN GARDENS

The Myšlín Gardens were established in 2017 from a devastated former farmhouse. The new owners began to gradually cultivate its territory, established an orchard, restored field roads and alleys. Part of the fields were planted with lavender, part

with herbs. They began to grow vegetables and fruits, trying to follow old and proven methods for growing and processing, without unnecessary chemistry. They sell their crop surplus directly from the gardens.



You can wander through the gardens of Myšlín and admire the many growing flowers all year round. Come and enjoy excellent coffee, homemade lemonades, cakes and other goodies in the new garden bistro in the style of Myšlín Provence. You can buy various products – seedlings of vegetables, annuals and perennials in spring, vegetables, fruits, homemade eggs throughout the season. Guests can stop here for breakfast in the grass or a family picnic.

And if you want to stay longer, stay in the cottages on wooden legs – Apple or Lavender tree stand – which offer great views of the orchard, lavender fields and starry sky. The local ponds Požerák and Nebesák were also reconstructed. A wetland is located under the ponds in the forest where the owners want to build pools and nature trails.

www.zahradymyslin.cz  [@zahrady_myslin](https://www.instagram.com/zahrady_myslin)

HOTEL CHATEAU BERCHTOLD

The area of the Hotel Chateau Berchtold offers accommodation, catering and many hiking and cycling trips around the area and other activities. Accommodation with children and pets is possible in the castle or in the guest house Pohádka. The resort is located directly on one of the cycling trails. Other sports are offered by the Sports Centre in the premises, which include tennis courts, table tennis, shooting ranges. Children can enjoy the beautiful garden with miniature castles and chateaux, hell, gingerbread house and a large trampoline, and they can also rent a go-cart on the traffic playground, and dads can play football-golf.

The local restaurant is popular for the famous sirloin, but in every season the restaurant offers interesting tasting events. Berchtold Chateau also organizes many events not only for children.

www.zamekberchtold.cz





HOTEL SEN

A place full of peace, relaxation and hospitality is located in the picturesque countryside in the village of Senohraby. Hotel Sen offers beautiful accommodation, a romantic wedding glade, modern congress facilities, fairytale wellness Infinet Sen

and a gourmet restaurant where you can enjoy an excellent lunch menu or a delicious dinner. The local staff will be happy to fulfil your every wish.

www.hotelsen.cz





ŠAFRÁNKA

BIO

Meruňky



UVÁŘENO VE ČTYŘKOLECH

MARMALADE ŠAFRÁNKA



The family marmalade factory with a production manufacture offers products from the fruit kingdom, where honest ingredients rule and copper pots clink. Šafránka marmalades have won a number of international awards, including the title of the Best Marmalade in the World in 2015.

Organic jams, marmalades, delicate spicy grill sauces and chutneys are made manually, without chemicals or pectin, and with very little added sugar. Those interested can join a practical workshop to learn the skills.

Stop by the local shop, which, in addition to countless products, also offers a look into the kitchen where these goodies are made. Or sit outside in the garden and enjoy a coffee or something good to eat.



www.marmeladysafranka.cz





SÁZAVA

The town is one of the most beautiful Sázava resorts. The area includes a Slavic fortified settlement from the 8th and 9th centuries, two prehistoric Neolithic fortified settlements and Neolithic limestone quarries. The most famous historical event is the arrival of the Christian hermit Procopius.

Modern history of the town is linked to the tradition of Czech glassmaking and the name of the Kavalír family (later Kavalier). The first glassworks were commissioned here in 1837 and their products gradually gained worldwide fame. Over time, the owners changed, however glass with the KAVALIER brand (later added SIMAX) is produced in Sázava to the present.



The glassmaking tradition is commemorated by the **Glass Art Centre Hut František**. It presents, among other things, a part of modern glass collection, which was created by artists at the ISG International Glass Symposiums in Nový Bor. The town of Sázava offers a unique atmosphere of places associated with the holy hermit, monk, abbot and Czech patron St. Procopius. You can visit the Vosovka well, where he met Prince Oldřich, turned water into wine and founded the famous monastery, or walk through the Devil's Furrow gorge, which, according to legend, he ploughed with the help of the devil harnessed to the plough. But there's so much more to see. Stop by in the relaxation zone U Martina, which was created around a deconsecrated church with a cemetery - the former chapel includes exhibits from the private collection of the Sázava collector Karel Král. Other interesting facts from the history and present of Sázava can be found on information panels or game and interactive elements on the restored forest trails in the city.

www.mestosazava.cz, www.visitsazava.cz



SÁZAVA MONASTERY

The Benedictine monastery was founded by the hermit Prokop in the 11th century on a hill above the right bank of the river. The area, which was an important centre of education and literature in the early Middle Ages, is a national cultural monument. The part administered by the National Heritage Institute offers a guided tour of Svatoprokopská Sázava (St. Procopius) with a Gothic chapter hall, Baroque refectory, cloister and many medieval artefacts and the northern monastery garden with the foundations of the Church of the Holy Cross. It is also possible to join an interactive audio-video tour of Sázava in the Course of Time.

www.klaster-sazava.cz



Pilgrimage site of St. Procopius

It consists of the pilgrimage church of St. Procopius and several other buildings of the Sázava Monastery, owned by the Church. The church and its surroundings have undergone a demanding reconstruction. The premises now offer a tour of the Czech patron St. Procopius, which is run by the Roman Catholic parish of Sázava-Černé Budy. It will take you, among other places, to the Gallery of St. Procopius, which was built in the vicinity of the church choir with a new organ. There are items from the temple treasure, including the memory of St. Procopius – a cup and spoon that allegedly belonged to him. The Winter Chapel of St. Barbara and the new Hall of St. Procopius are also accessible. At the end of the tour, visitors descend into the newly restored crypt with the remains of St. Procopius.

www.sazavskyklaster.cz



PYZUU FUN PARK

A small amusement park at the Pyskočely hydroelectric power plant is a paradise especially for children. Guests can have fun on the giant inflatable trampoline or playground with a slide, climbing frame and sandpit.

They can walk through a small zoo with llamas, ostriches, camel and peacocks – you can buy food for them at the small bistro. Refreshment is available, such as lemonade, ice cream or even a full lunch. You can eat on the small terrace overlooking the Sázava River.



LOOKOUT TOWER ŠPULKA

It is located on the hill Březák near Lbosín, 151 stairs lead to the viewing point at 30 m height. It is open all year round, entrance fee is voluntary.



A nature trail and birds trail lead from Lbosín to the lookout tower with ten „observation points” introducing the birds living around the lookout tower. An interesting view is also from the „forest cinema” in the form of two atypical shelters with a walking roof.

www.rozhlednaspulka.cz



HOTEL ACADEMY NAHÁČ

The history of the hotel, which is one of the most visited conference centres in the region, is connected with the construction of the D1 motorway. It was built in the place where the famous roadhouse Naháč stood since 1985, named after the settlement that had to be demolished due to the construction of the motorway. The original roadhouse was rebuilt into the new Hotel Akademie. It has 50 comfortably furnished rooms and suites with a total capacity of up to 130 guests. The surroundings of the hotel full of forests, meadows and sights also offer a pleasant background for relaxation or family holidays. You can spend it in the luxury hotel wellness Wine & SPA or at other hotel sports facilities - there is a Bowling Bar, a multi-purpose playground or a playground with monkey bars, a bouncy castle and miniature golf. During the summer holidays, children can enjoy activities in the kids club.



www.hotelinahac.cz



ZRUČ NAD SÁZAVOU

The oldest written mention of Zruč dates back to 1328. The dominant feature of the town is the chateau, which was preceded by a medieval castle built on this site probably in the first third of the 14th century. The chateau was reconstructed with the help of European funds. Tours take place here in the spirit of the last owners, the Schebek family.

Chateau and Chateau Park

Visitors to the chateau can choose from three guided tours, including a children's tour. In the attic there is a permanent exhibition World of Cubes and Dolls with a playroom for children. A beautiful park with a lake is around the castle.

Published by Posázaví o.p.s., Zámek Jemniště 1, 257 01 Postupice, 2023

 www.posazavi.com

 [/poznavameposazavi](https://www.facebook.com/poznavameposazavi)

 [poznavame_posazavi](https://www.instagram.com/poznavame_posazavi)

Text Jaroslava Tůmová

Photographs archiv Posázaví o.p.s., Petr Zemánek, cover David Vančíšin

Design & Print Pavel Fuksa – GraTypoPrint.cz

ISBN 978-80-87684-78-8

PUBLICATION NOT DESIGNED FOR SALE

The project was implemented with financial support of the Central Bohemian Region

Central Bohemian Region

The brochure Introduction to Posázaví was completed with financial support from the state budget of the Czech Republic from the program of the Ministry for Regional Development



**MINISTRY
OF REGIONAL
DEVELOPMENT CZ**