

ENGLISH

POSÁZAVÍ





Introduction	1	Týnec nad Sázavou	22
Jemniště Castle	2-3	Nad Řekou Restaurant	23
Benešov	4-5	Malé Posázaví	24-25
Ballooning CZ	6	Sázava	26
Konopiště Castle	7	Sázava monastery	27
Konopiště**** guesthouse	8	Sázava Island	28
Konopiště Motorcycle Museum	8	The Čtyřlístek guesthouse	29
Lešany military technical museum	9	Český Šternberk Castle	30-31
Benešov Brewery	10	Zruč nad Sázavou Castle	32
Benešov sports centre	11	The Posázavský Pacific	33
Royal town of Jílové u Prahy	12-13	Blaník Knights region	34
Hradištko	14	ParaZOO	35
Křečovice	15	Vlašim	36
Hotel Všetice	16	Museum of Podblanicko region	37
Neveklov	17	Voticko and Bystřicko, Česká Sibiř	38-39
Museum of enamel – Netvořice	18	Important contact information	40
Areál Barochov	19	Information Centres	41
Bisport Outdoor centre	20-21		



Wondering where to spend the weekend, or where to go on a family vacation? **Come to Posázaví!** Combine active relaxation with a visit to beautiful countryside and a piece of history. In Posázaví you will find, not only many cultural and historical sites and natural attractions, but also the famous Sázava river route, many hiking and biking trails, horse farms and a wide range of adrenalin activities. Or, how about taking ride on the legendary Posázavský Pacific!



We invite you to visit Konopiště, Jemniště and Vlašim or the Gothic castle at Český Šternberk. The monastery in Sázava promises mystical legends about St. Prokop. Know about them already? So, head to one of the other hidden secrets around Posázaví. Maybe, see the Romanesque rotunda in Týnec nad Sázavou or the ruins at Zbořený Kostelec or Zlenice. You will certainly not regret it.



ZÁMEK JEMNIŠTĚ

*Barokní perla středních Čech*

The secluded baroque chateau at **Jemniště** was built in 1720–1725; the current owner is Jiří Sternberg.

Come visit our noble residence with: lively modern services; well informed tours; tasteful exhibitions; finely kept garden with animals; our cozy Café Custoza with homemade desserts and dishes prepared from the best, highest quality ingredients.

Romantic and welcoming apartments with fireplaces, four-poster beds and breakfast served in a wicker basket. Order a picnic. Anyone can come in *Hunting Dress*; it's not just for huntresses.

Jemniště is a very pleasant, quiet, happy and hospitable place that makes you want to seek solitude and keep distractions at a distance, making it an ideal place for wedding parties.

#### Opening times:

January – March	only by prior appointment
April – May	Sat, Sun and public holidays 10:00 – 16:30
June, September	daily 10:00 – 17:30
July, August	daily 09:00 – 18:30
October	Sat, Sun and public holidays 10:00 – 16:30
November – December	only by prior arrangement



#### Zámek Jemniště s.r.o.

Jemniště 1, 257 01 Postupice  
tel.: +420 731 903 995  
tel./fax: +420 317 796 212  
e-mail: zamek@jemniste.cz

<http://www.jemniste.cz>  
<http://www.huntingdresscode.com>  
<https://www.facebook.com/jemniste>  
<https://www.facebook.com/huntingdresscode>





Beautiful countryside with vast forests, a network of hiking and cycling trails, and plenty of sports; not just for history lovers or parents with children. All this, and much more, is offered by the area around **Benešov**, just forty kilometres southeast of Prague. It is located in the region bordered by the river Sázava, the mythical Blaník mountain and the nearby Konopiště and Jemniště chateaux.

The town of Benešov and Konopiště chateau are serviced by a touristic EKOtrain road shuttle. It takes you to the most beautiful and the most important monuments in the city, but you can also jump on it to go to Konopiště castle and back.

The cultural town of Benešov provides year round experiences: Classical music aficionados can visit in April and

May for the Spring Josef Suk Festival, a tribute to the well known composer and violinist; and in September and October for the Podblanický autumn music festival. Come to Benešov any time, but you should also come to the traditional Benešovský fair, which is held every 1<sup>st</sup> May and offers all-day programs for all ages; and in August for the Benešovské feast weekend.



See the stars, hear the forest



#### Adventure trail for families with children

"S medem za medvědem" (Taking honey to the bear) trail: which leads from the oldest part of Benešov town, to the most beautiful site of Konopiště castle (you can take the EKOtrain). The trail then takes you to Jiří the bear in Konopiště. The trail has an associated game with puzzles and riddles leading to a hidden children's treasure trove. The trail is recommended for children 6 years or older, but it is possible to go with a stroller or bicycle.

#### "Za Habsburky do Benešova a okolí" (Following the Habsburgs to Benešov and surroundings) trail:

The trail takes you to places associated with Archduke Franz Ferdinand d'Este, the last owner of the large Konopiště estate and its chateau. The tour is 9 km long, starts and ends in Benešov. If you do not have the stamina to walk, you can ride the EKOtrain, which stops on the route at several places. The route can also be cycled.

#### Cultural and information centre

Masarykovo náměstí 230, 256 01 Benešov  
tel.: +420 317 726 004, +420 737 205 534  
e-mail: infocentrum@kicbenesov.cz  
<http://www.kicbenesov.cz>  
<http://www.ekovlacekbenesov.cz>

NEW TRAIL

**TAKING HONEY TO THE BEAR**  
– adventure trail  
for children 6+



NEW TRAIL

**Following the HABSBURGS**  
to Benešov and surroundings



EKOTRAIN

**When visiting Benešov**  
take the EKOtrain  
between Benešov and Konopiště



#### Město Benešov

Masarykovo náměstí 100, 256 01 Benešov  
tel.: +420 317 754 111  
e-mail: mu-bene@benesov-city.cz  
<http://www.benesov-city.cz>



INVESTICE DO VAŠÍ BUDOUCNOSTI  
SPOLUFINANCOVÁNO EVROPSKOU  
UNÍ Z EVROPSKÉHO FONDU PRO  
REGIONÁLNÍ ROZVOJ



The original impregnable gothic fortress of **Konopiště** was founded 700 years ago. In conjunction with a change of proprietor, the look of Konopiště castle also changed. In 1887 it was purchased by the archduke, František Ferdinand d'Este, heir to the Austro-Hungarian throne. After marrying the Czech countess, Žofie Chotkova, the castle became the home of the archduke's family.

Inside the castle's rich interior, you can admire a rare collection of armour and weapons, the so-called Este collection which ranks among the largest in Europe. The large trophy hall is testimony to František Ferdinand's passion

for hunting who, during his lifetime, managed to kill almost 300,000 animals. A unique opportunity to glimpse into the private apartments of the descendant's family is also offered.

When visiting the castle, taking a tour around the Rose garden or an evening tour with a guide in period costume are must-do activities. Why not enjoy our unique castle location while sampling some of the local specialty cuisine in the new restaurant located in the castle courtyard? The castle is open from 1<sup>st</sup> April until 17<sup>th</sup> November daily except Mondays.

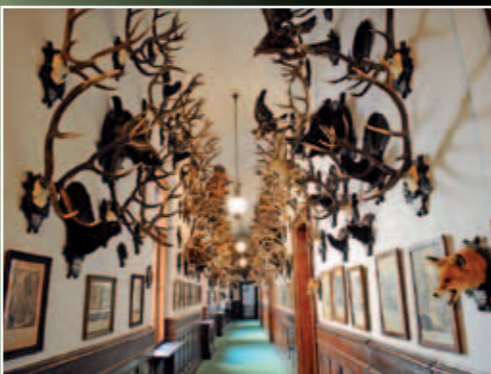
#### Zámek Konopiště

Konopiště 1, 256 01 Benešov  
tel.: +420 317 721 366  
+420 602 349 068

e-mail: konopiste@stc.npu.cz  
<http://www.zamek-konopiste.cz>  
<http://www.stc.npu.cz>

#### Reserving tours:

tel.: +420 224 497 492 – 5  
e-mail: rezervace@up.npu.cz  
<http://www.zamek-konopiste.cz>



The view from a balloon offers not only an unusual perspective of Konopiště castle but also the captivating landscape of the surroundings area. Balloon flights can reach heights of up to 500 meters, depending on the wind direction and speed. Once back on the ground, we

will welcome you with a toast and present you with a gift certificate, we will then transport for you back to where you started. There is no age limit for this activity.

**Motto: What we offer is the thrill of adventure, full of excitement and more.**

**When do we fly?** We fly from April to October - only in favourable weather conditions i.e. on fine days with for a minimum of 5 kilometre visibility and a wind speed of less than 4 m/s. We set off in the morning up to two hours after sunrise or in the evening up to two hours before sunset.

**Where do we fly to?** Around the picturesque landscape surrounding Konopiště castle, around 40 kilometres south of Prague. When purchasing a trip, we're flexible about arranging a different starting point for you.

#### Ballooning CZ, s.r.o.

Jiří Vokál  
Na Vrcholu 7  
130 00 Praha 3  
tel.: +420 603 337 005  
tel./fax: +420 222 783 995  
e-mail: ballooning@ballooning.cz  
<http://www.ballooning.cz>



Children and pets are welcome at the well appointed **Konopiště\*\*\*\* guesthouse**. The guesthouse is well known for romantic getaways for discerning guests and wedding parties.

It offers accommodation in six tastefully furnished apartments equipped with TV, PC with internet connection, WiFi, safe, and a large fridge bar. Two apartments have water beds; three have a fully equipped kitchen with all appliances and a washing machine. In the largest apartment "Sen" (Dream) is also appointed with a spa tub. The pension is complemented by the original historical character of the site and the beauty of the park. Konopiště

#### Pension Konopiště\*\*\*\*

Konopiště 30, 256 01 Benešov  
tel.: +420 737 230 294  
+420 317 702 658  
e-mail: info@pension-konopiste.cz  
http://www.konopiste.eu



also has the largest motorcycle museum in the Czech Republic. The breakfast lounge is located in a glazed room among the unique motorcycle exhibits. On request, we can bring breakfast or dinner in your room.

Please accept our invitation for a picnic in the countryside - the surrounding area around the hotel is made just for this. In the vast expanse of Konopiště Park you can definitely find a spot to relax on a blanket in the grass. We will be happy to loan you a picnic basket and fill it with whatever you would like! We're also happy to organise weddings, honey-moon trips, engagement parties, company teambuilding or other original events.



**Lešany military museum** can be found between the communities of Krhanice and Lešany u Týnce nad Sávou and forms part of the Prague Military Institute. The museum is located on the premises of a former artillery barracks. The exhibition currently comprises more than 700 historical tanks, canon, motorcycles, armoured vehicles, loading and personal vehicles, rocket technology and engineering resources, as well as logistical material dating from 1890 to the modern day. The museum is expansive, covering ten halls, six sheds as well as outdoor spaces. In terms of scale and composition, the collection

is unique, and is ranked among the most significant historical military resources in Europe.

Each year during the opening and throughout the summer season, events are held in the grounds of the Lešany museum including presentations of military technology in action: May – launch of the season, August – Tank day.

#### Opening times:

July – August: Tues – Sun 09:30 – 17:30  
June, September: Sat and Sun 09:30 – 17:30



VOJENSKÝ  
HISTORICKÝ  
ÚSTAV PRAHA

**Vojenské technické muzeum Lešany**  
257 42 Krhanice  
tel.: +420 973 296 161  
e-mail: museum@army.cz  
http://www.vhu.cz



#### BEER, HOPS, MALT – I LIKE IT!

**Real ale is malt, hops and water, nothing more, nothing less.**

**Benešov Brewery** was founded by Ferdinand Archduke Franz Ferdinand d'Este in 1897. Throughout its existence it has used traditional bottom fermentation in open vats and aging in the lager cellars.

Beer production is soundly based on the original brewing recipe: using only malted barley processed by its own malt house and the finest hops. Ferdinand Beer is characterized by its golden colour, sparkling clarity, strong body, the fullness of taste and high foam.

Drinking beer does not have to be just a taste experience; you can let your imagination wander into history. You'll experience that when you taste our special Seven semi-dark or light special lager d'Este. Both beers have

gained awards from the Central regional and Czech national panels.

The Brewery offers tours of selected operations, but you have to order in advance. There's a newly installed exhibit demonstrating Saaz and Bor hop varieties as well as an outdoor nature trail.



#### Pivovar Ferdinand a.s.

Táborská 306, 256 01 Benešov  
tel.: +420 317 722 511  
e-mail: [ferdinand@pivovarferdinand.cz](mailto:ferdinand@pivovarferdinand.cz)  
<http://www.pivovarferdinand.cz>



Do you want to do something for your health, to relax or simply to enjoy yourselves? Then come and have a good time - on your own or in the company of your friends and family.

**S-centrum Benešov** offers the widest range of sports activities in the region. The centre includes tennis courts, badminton courts, beach-volleyball courts, a football hall, an aerobic gym and a lot more. After the sports activities you can relax in our Finnish or steam saunas, a whirlpool or in the outdoor swimming pool.

The restaurant with a summer terrace offers excellent Italian cuisine including pizzas and home-made pasta. After dinner you can enjoy yourselves in our modern bowling bar.

The hotel offers accommodation for up to 62 people in cosy rooms with private bathrooms, TV, radio and internet connection. S-centrum is an ideal place for business and private events alike. There are 3 lounges which can accommodate 15 to 100 persons and are fully equipped with conferencing technology.



#### S-CENTRUM

U Vodárny 2215, 256 01 Benešov  
tel.: +420 317 750 001  
e-mail: [info@scentrum.eu](mailto:info@scentrum.eu)  
[objednavky@scentrum.eu](mailto:objednavky@scentrum.eu)  
<http://www.scentrum.eu>





The town of Jílové u Prahy and its surroundings represent one of the most beautiful places in vicinity of Prague. It was founded in the 13<sup>th</sup> century as a miner's settlement and its rich history is closely connected with gold mining.

In the town's historical centre there are three significant historical monuments from the pre-Hussite era, one of them being the Church of "sv. Vojtěcha" (St. Adalbert) with a unique Gothic table altar. The town square is dominated by the Town Hall with a well preserved "obecní šatlavou" (municipal prison), located in the original tower fortress.

Another significant historical monument is the "dům Mince" (Coin House) which used to be the seat of the gold mining management and the tax office. In present

times, the building houses the Regional Museum with permanent exhibitions mapping gold mining and history of the region, complemented by a general exhibition.

Other tourist places of interest include: the Church of "Božího těla" (Corpus Christi) built in the 14<sup>th</sup> century located at the local cemetery; and the alleged "healing" water springs in part of the town called Lázně (Spa) near the Chapel of St. Wenceslas.

The scenic landscape of the Sázava valley, surrounded by massive uplands also invites you to come for a trip. It is laced with numerous tourist paths. Visitors could, for instance, go to the Žampach bridge, which is one of the highest stone railway bridges and a technical marvel. Another trip destination could be the Pepř hill lookout tower offering amazing views of the surrounding landscape.



Another place worth visiting is the "sv. Josefa" (St. Joseph) drift mine in Dolní Studené, which is one of many mine works in the Jílové gold-bearing area. Some 100 metres from there is another mining site – "sv. Antonína Paduánského" (St. Anthony of Padua) drift mine where the last mining work was carried out in the first half of the 18<sup>th</sup> century. The Halíře drift mine is reminiscent of the early days of gold mining in the Jílové area when it was established in the mid 20<sup>th</sup> century.

The region is also alive in winter thanks to the Ski resort Chotouň, situated near the town, in the village of Pohorí and offers unique quality skiing experience.



**Kulturní centrum a knihovna**  
Masarykovo náměstí 1  
254 01 Jílové u Prahy  
tel.: +420 241 021 976  
e-mail: kic@jilove.cz  
<http://www.jilove.cz>

**Regionální muzeum Jílové u Prahy**  
Masarykovo náměstí 16  
254 01 Jílové u Prahy  
tel.: +420 241 950 791  
e-mail: info@muzeumjilove.cz  
<http://www.muzeumjilove.cz>

**Informační centrum**  
Masarykovo náměstí 16  
254 01 Jílové u Prahy  
tel.: +420 241 950 791  
e-mail: info@muzeumjilove.cz

**Ski areál Chotouň**  
tel.: +420 721 115 584  
e-mail: vlekychotoun@seznam.cz  
<http://www.vlekychotoun.cz>





**Hradištko** village lies in the confluence of the Vltava and Sázava rivers. Its main landmark is the Baroque chateau built in 1709 on the site of a medieval fortress. The ceilings of the hall and the ceremonial hall are decorated with frescoes of religious scenes, which were painted by the well known mid-18<sup>th</sup> century artist Jan Vaclav Spitzer.

The nearby village of Pikovice is a popular holiday destination. The most scenic area of the Sázava lies between Žampach and Pikovice, nicknamed The Golden Canyon, which can be admired from the Sázava Pacific, when canoeing down the river or from the Posázavské trails built by the Czech Tourism Club in 1920.

The highlight of Pikovice is the Medník peak and specially protected herb "kandik psí zub" (dogtooth violet), which

grows on its northern side. This is the only place in the country where it grows. It blooms in early spring, its pink-purple flower resembling cyclamen, attracts hundreds of visitors annually. There's a recently refurbished trail, one of the oldest in the Czech Republic, which starts at the train stop "Petrov u Prahy" and leads to Medník.

A dark chapter in the history of Hradištko was the forced eviction of the village during the Second World War when the SS established a training camp in the area. Visit the new nature trail "Vystěhované Hradištko" (Hradištko Displaced) with 10 stops to learn about life in the village during the German occupation, the fate of prisoners of concentration camps as well as the Štěchovická archive. The route starts near the chateau and is 8.5 km long.

**Obec Hradištko**  
<http://www.hradistko.cz>



Small village not far from the Slapy dam, is popular with filmmakers. In addition to scenes relating to the life and work of local native, composer Josef Suk, they also filmed "Farářův konec" (Parson's end) or "Není sirotek jako sirotek" (There's no orphan like an orphan).

**Křečovice** is known for the memorably famous comedy by Jiří Menzel "Vesničko má středisková" (My Sweet little village). Here you can see the front yard of the quirky driver Pávek's house or that of his co-driver Otto Rákosník.

You can visit Josef Suk's birthplace and museum. The composer's name has also been given to the avenue of lime trees, which won

the title of the best Alley the Central Czech Region, 2012. Also worth a visit is "sv. Lukáše" (St. Luke's) church.

Following the tourist signs will lead you to "Psaných skal" (Written Rocks), which gave the name to ancient carved religious texts, or to the former Celtic fortified settlement at Hrazany.

If you prefer active holidays or relaxing by the water, then you must not miss Novou Živohošť on the banks of the Slapy reservoir.

**Obec Křečovice**  
<http://www.obec-krecovice.cz>





**Hotel Všetice** is a part of the Všetice estate located in the neighbourhood of the same name, roughly 35 kilometres south of Prague. The premises include a covered riding hall with an inside sand arena and heated viewing platform. The hotel offers 43 beds in stylish two to four-bed rooms and apartments. When extra beds are needed, it's possible to increase the capacity to a total of 49 beds.

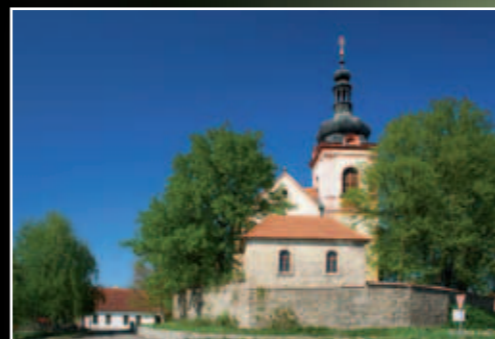
Fully equipped conference spaces are also available as well as a community room and two smaller spaces. Beside the hotel there is also an outdoor terrace, dance

floor and stage for concerts. The expansive garden with two ponds makes for the ideal location for organising company as well as family events.

Would you like your wedding day to be truly unforgettable? Then come and spend it with us! In the pleasant stylish surroundings of the restaurant or the wide outdoors of the park, we will help you celebrate your special day with family and friends, not to mention make your marriage vows. Wedding apartments are free for newly-weds.

**Hotel Všetice**  
Všetice 6, 257 44 Netvořice  
tel.: +420 724 522 758  
e-mail: hotel@vsetice.cz  
<http://www.vsetice.cz>

**Hotel Všetice**  
Statek Všetice



The Town of **Neveklov** lies in the area between the rivers Vltava and Sázava and is characterized by picturesque scenery and many tourist attractions. These include Neštětická mountain which is a reminder of the cruel suppression of the peasant rebellion in 1627 or Jablonná nad Vltavou castle, which offers a unique exhibition of European classical interiors by world renowned brands. The memorial in Neveklov is a memento of the violent eviction of regional inhabitants during the Second World War.

Neveklov is also the home town of the famous Kubelik family: John – violin virtuoso with a worldwide reputation; Rafael, the legendary conductor; and René, an outstanding violinist, who is currently concertmaster of the Southwest German Philharmonic Orchestra Konstanz.

Just 11 km from Neveklov is the Slapy dam which offers great opportunities for camping, ball and water sports. In case of inclement weather, there's an indoor pool in the town of Měřín.

The whole of the Neveklov region is interwoven with a network of hiking and biking trails, Neveklov hosts the favourite Greenways cycle route from Prague to Vienna.

The area is also a good choice for horse lovers - Heroutice horse farm offers beautiful vistas and adrenalin equestrian events. Or, you can follow in the footsteps of filmmakers – The early gothic church of "sv. Václava na Chvojínku" (St. Vaclav Chvojínk) was used as a backdrop for the film "Kytice" (Bouquets), "Panský" pond near Neveklov, where you can buy in-season fishing licenses, appeared in the film "Vesničko má středisková" (My Sweet Little Village).





The family owned **Enamel Museum** houses a large collection of Czech and Slovak enamelware from the second half of the 19<sup>th</sup> century. You'll be amazed by the many enamelled utensils used by our ancestors. You'll be delighted by the beauty and variety of colour, shape and utility: enamel teapots, cups and pots, pitchers and containers, roasting pans. Visitors arriving with enamelled contributions will be forgiven the modest admission price.

A dormitory for travellers and cyclists offers a modest and inexpensive, yet homely, **accommodation** with bed linen, or bring your own sleeping bags. Conveniences include shower, toilet, fridge and utensils for basic cooking. In the evening it is possible to sit by the fireplace or use the "kavárničky" theatre to relax.

Here you can also purchase original Czech handmade **souvenirs**, or practical items, if needed.

Lovers of old, stylish **antiques**, useful or completely frivolous items, will find delight in hunting for a bargain. You can try negotiating for something you fancy.

**Theatre "kavárničky"** allows weary travellers to rest and refresh themselves. Young children are catered for with a small playground.

We're always open when we're in, and always on Thursdays. We would recommend arranging a visit in advance.

#### Rodinné muzejíčko smaltu

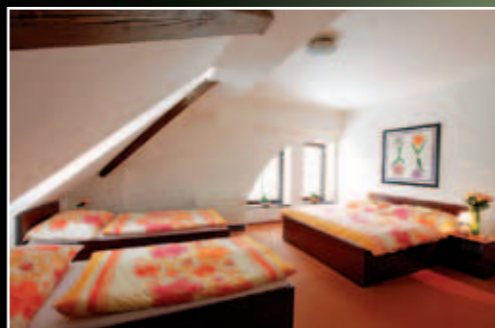
Pražská 13, 257 44 Netvořice

tel.: +420 776 151 343

e-mail: jindrasmidova@centrum.cz

<http://www.muzeumsmltu.cz>

<http://www.ukockyzakominem.cz>



**Areál Barochov** outdoor and recreational centre is located amidst the meadows, pastures and forests of the Sázava river. It offers activities for both children and adults alike and guarantees a fun activity-based experience.

Try to overcome your fear in the treetop Rope Park in the treetops. At the height of 6–10 metres above the ground there are 40 different obstacles. A special rope course with an independent zipline and a rope suspension

bridge is new for children. Another option is to play an action combat game called Battlefield LIVE!, linking the best elements of paintball and airsoft with the features of popular computer games.

For the romantic souls there is horse riding, trekking or horse-riding lessons in the riding-hall. After a demanding active day you can spend your night in our romantic rural pension located in the middle of the farm.

#### Areál Barochov

Barochov 7

251 67 Pyšely

tel.: +420 721 110 000

e-mail: [info@arealbarochov.cz](mailto:info@arealbarochov.cz)

<http://www.arealbarochov.cz>

<https://www.facebook.com/arealbarochov>





#### Paddling trips

- › Boat rental Sázava
- › Quality or it's free, no cancellation fee
- › Unbreakable stable canoes, kayaks, rafts and, new this season: sit-on-tops
- › Starting points: Stvořidla, Zruč nad Sázavou, Kácov, Czech Šternberk, Sázava, Čerčany, Týnec nad, Pikovice
- › Transport equipment and free maps
- › Discount loyalty scheme 5–20 %

#### Hostels:

- › Kácov, Czech Šternberk, Sázava, Čerčany and Týnec nad
- › Bed in your own sleeping bag for 145 CZK
- › Bed with linen from CZK 195 to CZK 260

#### Rope park

- › Zip-line over the river
- › 16 obstacles in two tiers
- › entrance: 95 CZK per person

#### School trips:

- › One instructor for FREE on weekdays.

#### Mountain bikes:

- › 60 quality mountain bikes
- › wide range of cycle routes in the vicinity



Bisport s.r.o.

Ing. Fr. Janečka 511  
257 41 Týnec nad Sázavou  
tel.: +420 317 701 460  
+420 777 335 618  
e-mail: info@bisport.cz  
http://www.bisport.cz  
Facebook:  
Bisport, Google+: Půjčovna lodí a kol





Popular tourist destinations around **Týnec nad Sázavou** include: original Gothic church of "sv. Šimona a Judy" (Saints Simon and Jude); and circular villa built in the First Republic by industrialist Ing. Frantisek Janecek, one of the founders of the factory that produced JAWA motorcycles. Any tour should include the ruins of the 14<sup>th</sup> century Zbořený Kostelec, which once guarded the trade route along the river Sázava. Czech King Wenceslas II is reputed to have been involved in founding the castle.

The jewel of the city is Týnec castle with its museum, art gallery and a rare exhibition of Týnec stoneware. The castle comprises a stone 11<sup>th</sup> century Romanesque rotunda and a 13<sup>th</sup> century Gothic rectangular tower, which

is also the summer residence of the endangered greater mouse-eared bat (*Myotis myotis*).

Regular events include: a nationwide dance competition for the Týnec Prize; brass band parades and regular dance parties with brass bands; a summer theatre for children; and musical evenings in the castle grounds. Do not miss the city's historical celebrations: Týnec střep; carving symposium; European night of museums and bats; Celtic evenings in the castle; or Nicholas with angels flying from the tower!

**Město Týnec nad Sázavou**  
<http://www.mestotytec.cz>



**Nad Řekou restaurant** is located in Týnec nad Sázavou, on the busy boating and cyclist route, only some 30 kilometres from Prague. Here you can enjoy the specialties of Czech and International cuisine, including pizza prepared in the traditional Italian wood-fired oven. The restaurant offers indoor seating as well as a terrace with a romantic view of the Sázava. The restaurant is non-smoking, except for the summer terrace.

Nad Řekou park is situated in this interesting part of the Sázava region and is a great starting point for your trips.



#### Restaurace Nad Řekou

Ing. Františka Janečka 511, 257 41 Týnec nad Sázavou  
tel.: +420 608 888 900  
e-mail: [info@hotelnadrekou.cz](mailto:info@hotelnadrekou.cz)  
<http://www.hotelnadrekou.cz>  
facebook: Hotel Nad Řekou v Týnci nad Sázavou

You can set out on foot, by car, on boat or on bike. The boat and bike rental are located right next to the restaurant, as well as a new rope park.

On a newly installed restaurant sign is a smiling green bicycle on a white background – a certificate showing that Cyclists are very welcome. On the menu you will find, among other things, homemade raspberry syrup or local specialty – Posázavské menu. The restaurant is open all day.





**Malé Posázaví** is located in an attractive, recreational landscape bordering the river Sázava, with good access to major roads. An important element is the railway line Čerčany - Světlá nad Sázavou, which is summer route of the popular Posázavský Pacific.

A number of cottage settlements were established along the steep river slopes in the period between the wars. From spring to autumn popular hiking songs often drifted across the river into the night. Golden River, as the Sázava was often called, not only provided a commercial infrastructure but also provided plenty of space for relaxation and entertainment.

Beautifully hilly, wooded terrain often cut deep by the Sázava River and the numerous tributaries that run down from the forested slopes, enhances the attraction

of this micro-region. In addition to the river, there are a number of cultural, religious monuments, small religious buildings, chateaux, castle ruins and swimming pools.

You must visit the church of "sv. Jakuba Většího" (St. Jacob the Great) of Rovné u Stříbrné Skalice which was founded around 1150, or St. Klimenta na Hradišti-Lštění located in a former Slovanic settlement. Also, on view are the churches of "Nanebevzetí Panny Marie v Choceradech" (Assumption of the Virgin Mary in Chocerady) or church of "sv. Bartoloměje v Ledcích" (St. Bartholomew of Ledce).



You will find the unique ruins of the Stará Dubá castle complex and the castle town of Odranec not far from Hvězdonic. The freely accessible ruins at Zlenice also offer a similar experience. How about taking a ferry ride to Senohraby swimming pool? Or head to the Komorní Hrádek built on the Čejchanová ruins. Tours of the museum of carriages, wagons, saddles and harnesses is offered at Vysoká Lhota castle. During a hot day, relax by the swimming pool at nearby Čerčany.

The idyll of rural life is epitomised by the village conservation area of Lensedly with its complex of original wooden buildings, a belfry and its square, picturesquely lined with lime trees. This is where Josef Lada, the writer and illustrator, takes you along the Water sprite (Vodnické) nature trail, the restored old walking trails and attractions that link the micro and Malé Posazavi Lada regions.

**Come to Malé Posazavi for entertainment and fun!**



**MALE POSAZAVI**

<http://www.maleposazavi.cz>



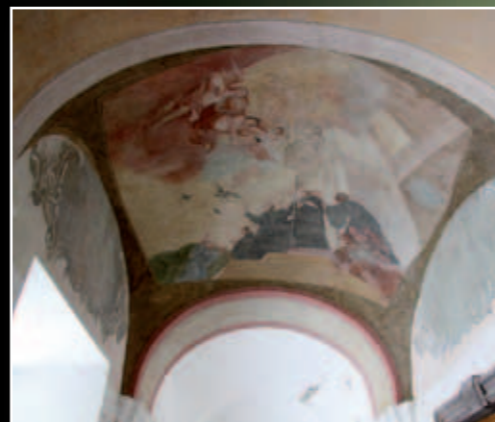
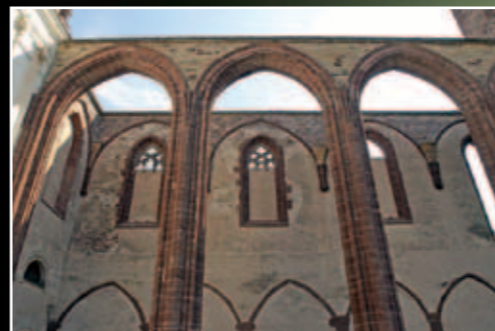
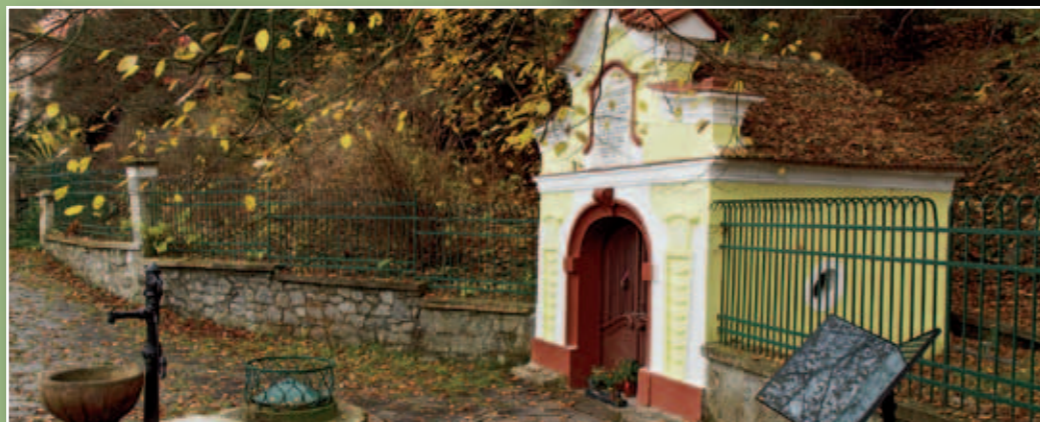
The history of **Sázava** does not begin in the Middle Ages, as was thought until recently, but archaeological findings show human presence in the city from prehistoric farming times.

Sázava is closely associated with the life of Czech patron Saint Prokop, who, in the 11<sup>th</sup> century monastery, established the Old Slavonic liturgy. Around the 4<sup>th</sup> July commemorations of St. Prokop's famous pilgrimage takes place.

Another important personality from Sázava was František Kavalír, founder of the local glassworks. His name will be given to a smelter, which will part of a new glass art centre, due to open in 2014.

Dramatist, poet and actor Jiří Voskovec was born and lived in Sázava. Voskovcova Sázava musical competition for amateur theatres is held in his honour. Life in a small town on the banks of the river is vividly depicted in the film "Báječná léta pod psa" (The Blissful Years of Lousy Living), which was based on the book by Michala Viewegha.

Embark on a new three-mile walking trail in the town's biocorridor that takes you along the river Sazava from Budínského weir across the Havránský park up to Krkavčím cliffs. From there you can enjoy the view of many of the places associated with Sázava's thousand-year history.



**Sázava monastery** was founded in 1032. The exhibition "Svatopřokopská Sázava" (Saint Prokop's Sazava) tells the story of the life of the Czech patron Saint Prokop and the thousand-year history of the monastery. In the northern monastery garden are foundations of a basic 11<sup>th</sup> century church of "sv. Kříže" (St. Cross), inside the convent is the rare 14<sup>th</sup> century Chapter Hall. In the Baroque church can be found the miraculous adoration painting and relics of St. Prokop.

unique and mysterious atmosphere of places associated with the holy hermit monk, abbot and the Czech patron St. Prokop. Visit Vosovka fountain, where he met with Prince Ulrich, turned water into wine and founded the famous monastery, or stroll through the "Čertova brázda" (Devil's wake) gorge, which, according to legend, St. Prokop harnessed the devil to plough.

Rich baroque and Gothic frescos were discovered in the monastery cloister in 2007. Come and experience the



**Národní památkový ústav**  
správa kláštera v Sázavě  
Zámecká 72, 285 06 Sázava  
tel.: +420 327 321 177  
e-mail: sazava@stc.npu.cz  
<http://www.klaster-sazava.cz>

#### Opening times:

April Sat, Sun, public holidays	10:00 – 17:00 (last tour at 15:30)
Week days only for pre-booked groups	
May Tues – Sun	10:00 – 17:00 (last tour at 15:30)
June Tues – Sun	10:00 – 18:00 (last tour at 16:45)
July, August Tues – Sun	10:00 – 18:45 (last tour at 17:15)
Sept Tues – Sun	10:00 – 17:00 (last tour at 15:30)
October Sat, Sun, public holidays	10:00 – 17:00 (last tour at 15:30)
November, December on week days for pre-arranged groups to 21. December	
* open 17. 11.	
January, February, March	closed





**Sázava island** resort is located on the outskirts of Sázava, 45 km southeast of Prague (D1 motorway exit 34). It provides various types of accommodation, meals and leisure activities for families, school trips and water sports enthusiasts or tourist.

The area is ideal for corporate events, team building, and weddings. We offer fully furnished apartments, mobile homes and tents, playground, sports facilities and other attractions. There are also two, three and four-bed rooms, along with well equipped conference rooms and lounges that provide a great environment for training, meetings or conferences.

The site includes the "Sázavská taverna" (Sázava inn) which can offer a la carte or daily prepared menus for banquets or grilled steaks over an open fire. In summer, there's a beach bar by the river.

Further downstream, in Čerčany, a new camp, "Paluba" has opened this year. There are sites for tents and caravans; accommodation can be provided in permanent tents in our orchard or hostel accommodation and it also has a refreshment kiosk.



**Kemp Sázavský ostrov, s.r.o.**  
Poznaňská 297  
285 06 Sázava  
tel.: +420 602 696 680  
+420 724 354 250  
e-mail: [recepce@sazavskyostrov.cz](mailto:recepce@sazavskyostrov.cz)  
<http://www.sazavskyostrov.cz>



**Pension Čtyřlístek**, Hana Filipová  
Šternberské koláče, Jan Filip  
Český Šternberk 45, 257 27 Český Šternberk  
tel.: +420 724 359 073, +420 607 177 944  
e-mail: [pension.ctyrlistek@seznam.cz](mailto:pension.ctyrlistek@seznam.cz)



Looking for a quiet place where you can relax after a long trip? Stop by the Čtyřlístek guesthouse (4 leaf clover) in sight of the Český Šternberk castle. It offers accommodation in three triple and one double en suite rooms and four-bed apartment with a private entrance. The homely environment is much appreciated by families with children.

In addition to the peace and quiet, typical for a small castle town, we also offer our famous specialties – poppy seed, cottage cheese, ap-

ple, plum and blueberry Šternberské pie. Their aroma rises from the ground floor bakery and permeates the square.

The bakery is part of the local grocery shop where cakes can also be ordered for weddings, family reunions or for breakfast. They can be enjoyed with coffee in the nearby garden. Just a few bites and you will understand why Šternberské cakes received top marks as a "Kraj Blanických Rytířů" (Knights of Blaník) Regional product®.



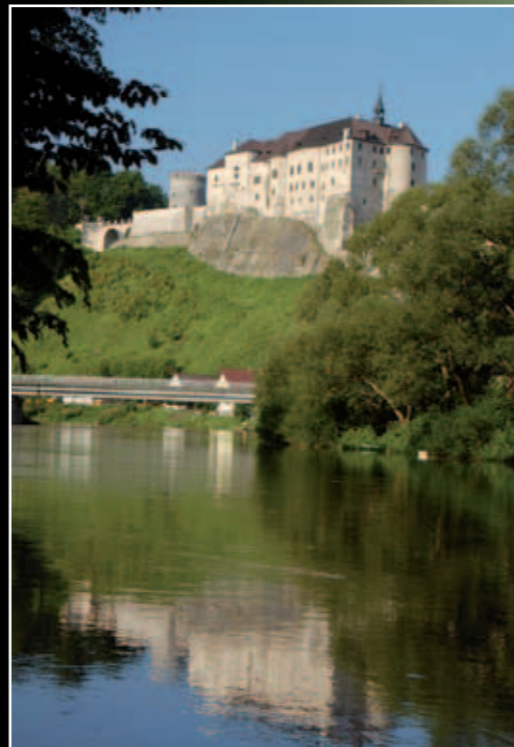
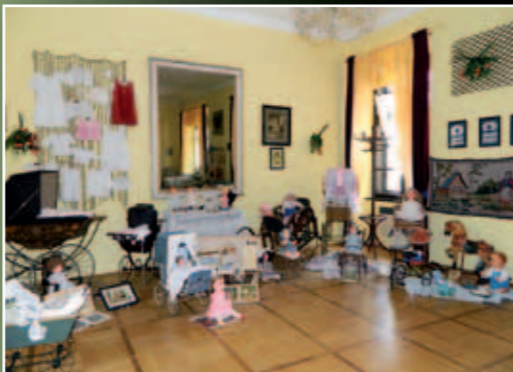
**Český Šternberk Castle** has dominated the middle Posazavi area for 772 years, during which time the custodianship has been passed down through the Sternberg family for 20 generations.

Tours will relate stories of ancestors who lived in the castle in the 19<sup>th</sup> and 20<sup>th</sup> century, and you'll be able to take a peek into their way of life. For example: you will find out how furniture and the interior were arranged; which were the fashionable decoration of the age; or what the first electricity supply looked like in 1911.

The tour will guide you through a wonderful collection of copper engravings from Thirty Years' War era; this is one of the largest monothematic collections of prints in Europe.

The life of the Sternberg's and their castle comes to life on the 19<sup>th</sup> and 20<sup>th</sup> October 2013. Šternberg's employees, their families and friends re-enact the castle's residents and demonstrate how life in different eras was challenging, amusing and required courage, empathy, diplomacy, perspective and a sense of humour.

From June to late August, the castle has an open exhibition of strollers. Not only will you see historical children's prams from 1860 to 1960s, but there are also dolls, babies' contemporary clothing, wraps, pads, samples of children's rooms and doll's tableware.



Have you already seen the castle and do you want to know more? If wandering around the interior of the castle is not to your taste, but do you like nature then come with us on a walk! This season we are organizing guided walks around the castle, where the familiar example of Baroque statues from the late 18<sup>th</sup> century have become an integral part of the local landscape. You'll learn more about the castle's fortifications and the Sternberg estate.



**Hrad Český Šternberk**  
257 27 Český Šternberk 1  
tel.: +420 317 855 101  
fax: +420 317 855 118  
e-mail: [info@hradceskysternberk.cz](mailto:info@hradceskysternberk.cz)  
<http://www.hradceskysternberk.cz>

#### Opening times:

April, October	Sat, Sun, public holidays	09:00 – 17:00
May, September	Tues – Sun	09:00 – 17:00
June – August	Tues – Sun	09:00 – 18:00

The final tour starts 45 minutes prior to closing time.

The castle is open all year around for pre-booked tour groups.





The first mention of **Zruč nad Sázavou** dates from 1328, but it is quite certain that the settlement is much older. You may already know that the Knights Templar built a castle on the rock above the river Sázava to guard the important trade route. The original wooden fortress was eventually replaced by a stone building, which was then later converted from a castle to chateau. In 1948 the castle was confiscated, and in 1989 returned to the descendants of the last owner. In 2003 ownership was taken by the city.

From 2006 to 2010, with the support of European funds, the chateau was lavishly restored and opened to the public. The castle is open from late April to late Sep-

tember, every day from 10:00 to 17:00. Visitors can choose from two guided tours: visit the castle tower or visit the renovated interiors. Girls will love the permanent exhibition in the dolls and teddy bear museum, and boys will have fun in the moat on the Sir Miloty Kolowrata's trail. The Regional Museum offers an exhibition "From the Workbench to Bata" following the development of shoemaking craft in the city.

Young visitors to Zruč nad Sázava will love the playground with ball bearing tracks and traffic play area. The playground is open daily and pedal cars can be rented.



Come take a ride along the romantic track along the Sázava valley on one of the regular passenger trains, historic steam train or order your own train. Climb aboard and take in the beauty of nature and skills of our ancestors. Legendary railway from Prague to Světlé nad Sázavou has been in operation for more than 100 years, but is still one of the most popular train journeys.

Experience the age of smoke and steam by taking the steam locomotive to Posazavi. Every summer special

outings are arranged during important regional cultural events. In front, steam locomotive number 434.2186, type "2-8-0", built in 1917, hauls a train of historic carriages.

**Posázavský Pacifik** can take you to the gold mines in Jílovém u Prahy; the Military Technical Museum in Lešany; the ruins of castle Zlenice; the monastery in Sázava; Český Šternberk castle; the brewery in Kácov; the chateau in Zruč nad Sázava or the rapids on Stvořidla.



**České dráhy, a.s.**  
tel.: +420 972 241 629  
e-mail: lemerk@kcod.cd.cz  
pavlik@kcod.cd.cz  
<http://parnijizdy.ic.cz>



**Posázavský Pacifik, o. s.**  
Havlíčková 445, 257 22 Čerčany  
tel.: +420 317 776 518  
e-mail: posazavsky.pacifik@seznam.cz  
<http://www.posazavsky-pacifik.cz>



The county of **Blaník Knights** is overflowing with natural beauty and rich history. Velký Blaník is known for the legend of the sleeping army. On the mountain peak is an observation tower, where the interactive "rytířem na Blaník" (Knights on Blaník) nature trail starts.

Discover the unique Romanesque churches in Načeradec, Prácheň, Kondrac and Libouň. Take a ride on the cycle paths in the romantic parks in Vlašim, Ratměřice and Odlochovice. Your children will certainly enjoy a visit to the paraZoo in Vlašim, the interactive Bee World in Hulicích, the Parish Museum in Kondrac or a performance of summer fairytales in Vlašim park. Find refresh-



ment in the non-traditional Křišňův dvůr farm in Městečku or in the family candy store on the square in Vlašim.

**Český svaz ochránců přírody Vlašim**  
Pláteníkova 264, 258 01 Vlašim  
tel./fax: +420 317 845 169  
e-mail: kbr@csop.cz  
<http://www.blanicti-rytiri.cz>

**KRAJ BLANICKÝCH RYTÍŘŮ**  
Zážitky na venkově



**paraZoo** is a unique exhibition of Czech wildlife. You will see otters, lynx, owls, crows, storks, various birds of prey and many other animals that have been brought to animal rescue centres, but, because of injuries they sustained, can no longer be released back into the wild. Come and hear their stories and learn how to help animals in the wild.

Your children will be captivated watching the underwater activities of otters in their glass walled pen, hearing the dendrofon (a log xylophone) or they can play in the kid's area. Numerous benches along the pathways will give you a chance to rest and enjoy the area.

#### Opening times:

April – September	Tue – Sun 10:00 – 18:00
October, November, March	Tue – Sun 10:00 – 16:00
December – February	closed



**Český svaz ochránců přírody Vlašim**  
Pláteníkova 264, 258 01 Vlašim  
tel./fax: +420 317 845 169  
e-mail: vlasim@csop.cz  
<http://www.csopvlasim.cz>  
<http://www.parazoo.cz>

- Permanent exhibition of Czech Republic fauna
- Exhibition of bird houses and animal shelters to bring life to your garden
- Demonstrations to show how to protect animals against accidents in the country and city
- Guided tours – by prior arrangement
- Eko-shop, literature and regional products



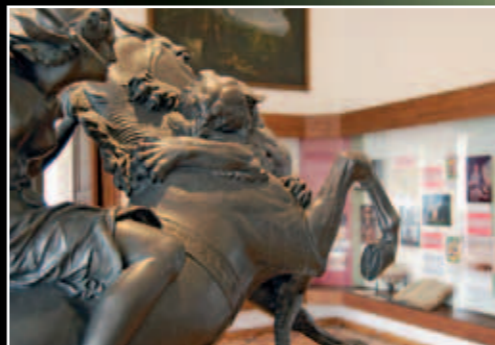
**Vlašim's** history dates back to 1318, when it was recorded as the castle on the river Blanici. Then, in the first half of the 16<sup>th</sup> century the church of "sv. Jilji" (St. Giles) was established. During the Baroque period the Deanery and the Old Town Hall were built; the 19<sup>th</sup> century saw the founding of the former credit union. The Hussite church was set up during the 1<sup>st</sup> Republic. The present appearance of the square and the waterfront by the bridge makes Vlašim an attractive tourist destination.

When you visit Vlašim, do not miss the local park, a green oasis amidst the urban bustle. It was founded in the last third of the 18<sup>th</sup> century, during the Auersperg era. It was built on the site of a former game lodge and is filled by a number of buildings, sculptures and nooks. The park, as well as the castle, is open to the public. The renovated park has become one the main attractions in the city.



**Turistické informační centrum Vlašim**  
tel.: +420 317 847 207  
e-mail: info@vlasimskypark.cz  
<http://www.vlasimskypark.cz>  
Guided tours through the castle park are available during the season.

Take the winding paths in the park on a journey into history. Discover the legend of the giant Samson, a sandstone statue looking down from a rocky promontory above the river Blanici. The park is accessible from the Chinese pavilion, the renovated old Castle and the Baths. Refreshments are available in the 19<sup>th</sup> century park gatehouse.



In 1988, the castle became the home of the **Vlašim Podblanicka Museum**, which also has annexes in Benešov and Růžkové Lhotice. In the castle grounds, visitors can see an exhibition about the park and the history of Vlašim, its sharp shooters – a tradition of marksmanship and soldiering, and a permanent exhibition of antique mirrors.

Enhance your experience by visiting the chapel with its painted and stuccoed hall. Collections of antique, natural and engineering objects will introduce you to Podblanicka's history. The castle's tower offers a unique view of the city. A basement exhibition illustrates the secrets of vaulting. Throughout the year, museum organizes exhibitions, concerts and lectures.

### Středočeský kraj

**Muzeum Podblanicka Vlašim**  
Zámek 1, 258 01 Vlašim  
tel.: +420 317 842 927  
e-mail: muzeumvlasim@iol.cz  
muzeumvlasim@seznam.cz  
<http://www.muzeumpodblanicka.cz>

#### Opening times:

March – June	Tues – Sun 09:00 – 12:00 and 13:00 – 16:00
July and August	Tues – Sun 09:00 – 12:00 and 13:00 – 17:00
September – December	Tues – Sun 09:00 – 12:00 and 13:00 – 16:00

#### "Jeden den s historií" (One day in history)

**First stop** – a branch of the museum in Benešov (Malé náměstí 74). Children can see an exhibition of Barbie dolls and parenting treasures from Benešov's past - with Franz Ferdinand d'Este era everyday wear and fashions.

**The second stop – Vlašim.** In the cool, underground exhibition halls, you'll discover exciting collections of antiques, weapons and archaeological finds from the Celtic era to the period of the Auersperg princes.

**Third stop – Chateau Růžkový Lhotice.** Enjoy the picturesque environment, which inspired the comedy Zdeněk Svěrák. The chateau was much loved by Bedřich Smetana and an exhibition commemorates Richard Wagner and Gustav Mahler.



**Votice** town and its surrounding area is located in the Podblanicka, which writer Jan Herben nicknamed "**Českou Sibiř**" (Czech Siberia). The region is characterized by colder weather, beautiful scenery and historical sites. Here you can spend a wonderful family vacation with remarkable experiences. We have some suggestions for you:

In Votice you can climb the highest tower of sv. Václava (St. Wenceslas) church and view the whole city; see a faithful 1685 reproduction of the Holy Sepulchre of Jerusalem and Virgin Mary sculpture. Experience the rich local history at the museum; visit the Jewish cemetery and the Franciscan monastery.

Do you know where to find the Blue Cat "Modrou kočku" in Votice? She lives in the restaurant and guest house of the same name, opposite the church tower. They offer ac-

commodation, full board, outdoor seating, a children's playground, a wine cellar, facilities for cyclists (part of Cyclists welcome) and every Sunday summer evening, performances of fairytales – and... not just for children! "Votická kopretina", a map specifically for cyclists, contains nearly 200 km of recommended cycling routes, catering for every skill level from families to experienced cyclists.

Are you interested in how people lived in 19<sup>th</sup> century Bohemia? What was a "head clamp" (hlavodržka) and what it is used for? Was Sidonie the Beautiful really beautiful? You'll find out if you visit the castle in Vrchotovy Janovice where there's a permanent exhibition of Bohemian 19<sup>th</sup> century companies, an exhibition of Czech bell tolling and a presentation of the life of the last owner of the castle, Sidonie the Beautiful and her friends Rainer Maria Rilke and Karl Kraus.



If you like to roam while being educated, then take the seventh nature trail "Votická Bystřicko". At the village of Ratměřické, the "bitvě u Jankova" (Battle of Jankov) trail will familiarise you with the bloodiest battle of the Thirty Years' War. Part of this trail is also a tribute to the life of farmer Oneš.

Another tip is to hike the trail "Po stopách Sidonie Nádherné" (Following the footsteps of Sidonie the Beautiful) between Vrchotovými

Janovice and Olbramovice or just take a stroll around Votice. The Čapí Ecocentre is home of a Stork's nest near a nature trail that runs between paddocks that house different breeds of domestic livestock. The Ecocenter also has a ropes course.

One of the oldest historical monuments of the Kalvárie region can be found not far from Miličín, it's a 13<sup>th</sup> century Romanesque rotunda at Libouň. You'll be enamoured by the landscape while walking through the parks that surround the castles in Vrchotovy Janovice, Ratměřice, Odlochovice and Lisen. If you have courage and want to see this region from the air, then visit the Nesvačily airport near Bystřice.



**ASSISTANCE FOR YOU**

**FIRE BRIGADE**  
150



**AMBULANCE** 155



**POLICE** 158



**SOS** EMERGENCY  
NUMBER 112

Medical emergency  
tel.: +420 317 756 485

Rudolf and Stefanie Hospital in Benešov  
tel.: +420 317 756 111

**ASSISTANCE FOR YOUR CAR**

**Verold Benešov, spol. s r.o.,**  
Na Červených vrškách 1490, 256 01 Benešov  
Servis tel.: +420 317 723 411  
SERVIS 24 – ÚAMK tel.: 1230

**ASSISTANCE FOR YOUR BICYCLE**

Cykloservis J. Břečka, Pražská, Sázava  
Cykloport NOVOTNÝ, Jílovská 262, Týnec nad Sázavou  
CYKLOŠVEC s.r.o., Na Potoce 225, Vlašim  
BIKE SPORT 007, Červené Vrsky 1594, Benešov  
Jízdní kola Kučera, Lidická 1781, Vlašim  
Prodej a opravy horských kol, Čerčanská 112, Poříčí nad Sázavou  
Sport Šefčík Prodejna LYŽE – KOLA, Ke Stadionu 2095, Benešov  
Tomáš Trojánek, Pavlíkova 1528, Benešov  
VELO FOX, Dr. E. Beneše 159, Bystřice  
VELO SPORT Krupička, Na Bezděkově 2005, Benešov

tel.: +420 728 474 008  
tel.: +420 317 701 823  
tel.: +420 317 844 116  
tel.: +420 317 722 152  
tel.: +420 602 831 037  
tel.: +420 317 779 934  
tel.: +420 606 425 200  
tel.: +420 776 098 062  
tel.: +420 317 793 416  
tel.: +420 317 723 627



**Cultural and information centre**  
Masarykovo náměstí 230, 256 01 Benešov  
e-mail: infocentrum@kicbenesov.cz  
tel.: +420 317 726 004  
+420 737 205 534

**Information Centre Konopiště**  
Konopiště 4, 256 01 Benešov  
e-mail: konopiste@kicbenesov.cz  
tel.: +420 317 705 681  
open: april – october

**Information Centre Čerčany**  
Sokolská 28, 257 22 Čerčany  
e-mail: info@cercany.cz  
tel.: +420 775 410 550

**Information Centre Kutná Hora**  
Palackého náměstí 377, 284 01 Kutná Hora  
e-mail: infocentrum@kutnahora.cz  
tel.: +420 327 512 378

**Information Centre Louňovice pod Blaníkem**  
Zámek 1, 257 06 Louňovice pod Blaníkem  
e-mail: infopodbla@atlas.cz  
tel.: +420 317 862 022  
open: april – october

**Tourist Information Centre Mnichovice**  
Masarykovo náměstí 83, 251 64 Mnichovice  
e-mail: infocentrum@mnichovice.info  
tel.: +420 323 666 311

**Information Centre Neveklovsko**  
náměstí Jana Heřmana 333, 257 56 Neveklov  
e-mail: info.neveklov@seznam.cz  
tel.: +420 317 741 207

**Information Centre Rataje nad Sázavou**  
Zámecká 1, 285 07 Rataje nad Sázavou  
e-mail: infocentrumratajenadsazavou@seznam.cz  
tel.: +420 327 322 169  
open: may – september

**Tourist Information Centre Říčany**  
Masarykovo náměstí 83, 251 01 Říčany  
e-mail: jarmila.vorackova@ricany.cz  
tel.: +420 323 618 169

**Information Centre**  
Školská 434, 285 06 Sázava  
e-mail: infocentrum@mestosazava.cz  
tel.: +420 327 320 763

**Information Centre Sedlčany**  
náměstí T. G. Masaryka 32, 264 80 Sedlčany  
e-mail: urad@mesto-sedlcany.cz  
tel.: +420 318 821 158

**Tourist Information Centre Týnec nad Sázavou**  
Klusáčkova 2, 257 41 Týnec nad Sázavou  
e-mail: ic@centrumtynec.cz  
tel.: +420 317 729 050, +420 775 290 032

**Information Centre Jílové u Prahy**  
Masarykovo náměstí 16, 254 01 Jílové u Prahy  
e-mail: info@muzeumjilove.cz  
tel.: +420 241 950 791

**Information Centre**  
Pečírková 168, 285 04 Uhlířské Janovice  
e-mail: kic@uhljan.cz  
tel.: +420 327 542 197

**Information Centre Votice**  
Komenského náměstí 177, 259 01 Votice  
e-mail: infocentrum@votice.cz  
tel.: +420 317 812 505

**Information Centre Zruč nad Sázavou**  
Zámek 1, 285 22 Zruč nad Sázavou  
e-mail: infocentrum@mesto-zruc.cz  
tel.: +420 327 531 329

**Divišov Museum**  
Šternberská 158, 257 26 Divišov  
e-mail: synagoga.divisov@gmail.com  
tel.: +420 317 855 224

**Tourist Information Centre Vlašim**  
Zámek 4, 258 01 Vlašim  
e-mail: info@vlasimskypark.cz  
tel.: +420 317 847 207, +420 734 362 091

**Internet study Vlašim**  
station building  
e-mail: icnadrazi@vlasimskypark.cz  
tel.: +420 606 676 590



**POSÁZAVÍ**  
[www.posazavi.com](http://www.posazavi.com)

Published by Posázaví o.p.s., Zámek Jemniště 1, 257 01 Postupice  
Text Jaroslava Tůmová

Photographs Jaroslav Pelíšek, archiv Posázaví o.p.s.  
Design and production by Pavel Fuksa – GraTypoPrint

PUBLICATION NOT DESIGNED FOR SALE  
ISBN 978-80-87684-07-8