

POSÁZAVÍ

Region

History

Culture

Nature

Sport



Information Centres

Cultural and information centre

Masarykovo náměstí 230, 256 01 Benešov
e-mail: infocentrum@kicbenesov.cz
tel.: +420 317 726 004
+420 737 205 534

Information Centre Konopiště

Konopiště 4, 256 01 Benešov
e-mail: konopiste@kicbenesov.cz
tel.: +420 317 705 681
Open: April – October

Konopiště PARK Information Centre

Main parking lot at Konopiště
e-mail: icparkkonopiste@seznam.cz
Open: April-October

Information Centre Čerčany

Sokolská 28, 257 22 Čerčany
e-mail: info@cercany.cz
tel.: +420 775 410 550

Information Centre Louňovice pod Bláníkem

Zámek 1, 257 06 Louňovice pod Bláníkem
e-mail: infopodbla@atlas.cz
tel.: +420 317 862 022
Open: April – October

Information Centre Neveklovsko

náměstí Jana Heřmana 333, 257 56 Neveklov
e-mail: info.neveklov@seznam.cz
tel.: +420 605 106 256

Information Centre

Školská 434, 285 06 Sázava
e-mail: infocentrum@mestosazava.cz
tel.: +420 327 320 763

Tourist Information Centre Týnec nad Sázavou

Klusáčkova 2, 257 41 Týnec nad Sázavou
e-mail: ic@centrumtynec.cz
tel.: +420 317 729 050, +420 775 290 032

Information Centre Jílové u Prahy

Masarykovo náměstí 16, 254 01 Jílové u Prahy
e-mail: info@muzeumjilove.cz
tel.: +420 241 950 791

Information Centre Votice

Komenského náměstí 177, 259 01 Votice
e-mail: infocentrum@votice.cz
tel.: +420 317 812 505

Information Centre Stříbrná Skalice

Na Městečku 71, 281 67 Stříbrná Skalice
e-mail: infocentrum@stribrnaskalice.cz
tel.: +420 737 886 294

Divišov Museum

Šternberská 158, 257 26 Divišov
e-mail: synagoga.divisov@gmail.com
tel.: +420 317 855 224

Tourist Information Centre Vlašim

Zámek 4, 258 01 Vlašim
e-mail: info@vlasimskypark.cz
tel.: +420 317 847 207, +420 734 362 091

Internet study Vlašim

Station building
e-mail: icnadrazi@vlasimskypark.cz
tel.: +420 606 676 590





POSÁZAVÍ

www.posazavi.com



You do not have to travel hundreds of miles to get new experiences... Take a bit of fantasy and you will literally find everything just “around the corner”. Don’t you believe? So you can take a journey with us through the region Posázaví. To explore new things, relax and to take adventure and

adrenaline. We do not promise any impossible things. This publication may bring you inspiration and invitation. And if you still have not chosen anything, you may find further tips on our website.

BENEŠOV REGION



You can see the red roof of the tall tower of **KONOPIŠTĚ CASTLE** from long distances around. You only need a few minutes to understand the reason why Franz Ferdinand chose this oasis of peace and tranquillity for his family residence. Just take a walk through rooms of the castle or enjoy atmosphere of the romantic park situated here around. While walking, you may be led to the Rose Garden or to the restored Cork Pavilion. You can admire beauty of cold and

shooting weapons in the Esten Armoury which belongs to the most valuable and the most important armouries in Central Europe. There is also the unique collection of woodcarvings, paintings and artefacts with motives of a brave dragon fighter, exhibited in the St. George Museum. Everyone will enjoy the playroom with quaint shooting range; everyone – not only men. The playroom includes automatic moving targets.



Zámek Konopiště

Konopiště 1, 256 01 Benešov

tel.: +420 317 721 366

+420 602 349 068

e-mail: konopiste@npu.cz

<http://www.zamek-konopiste.cz>

<http://www.npu.cz>

Reserving tours:

tel.: +420 224 497 492 – 5

e-mail: rezervace@npu.cz

<http://www.zamek-konopiste.cz>



Peacocks that can be seen in the park are great attraction especially for children; but there is also bear George that lives in the run out area in the castle moat. Within eyeshot of Konopiště but apart from the crowd of tourists there is a former settlement Chvojen which includes the church of St. Jakub and Filip. There are many legends of the Celts related to this settlement. You can try by yourselves whether or not are true the words that talk about energy given to people visiting this place. You can also visit the nearby ruins of castle Kožlí, those mentioned for the first time in 1318. Even the well-known poet Karel Hynek Mácha was impressed by romantic appearance of the castle. Just four kilometres west of Konopiště there is the hill Chlum (506 metres above the sea level). Pyrite, pyrrhotine and hematite (iron oxide) were extracted here in the period from 1655 to 1660. There is 47-metre-long drift "Ladislav" that remained preserved on the south-east slope. Experimental extraction was held here in the period from 1830 to 1834.

Konopiště

It is our pleasure here in our information centre located in the central parking under the castle to tell you where to go and what not to miss in Konopiště. You can also purchase tickets to see the castle. While waiting for the guided tour, you can visit the



little local shop with a wide range of souvenirs. Or you can also have an excellent coffee in the **FERDINAND BAR**. Take a walk to the castle park. While in the Rose Garden, take a rest in the **ROSE CAFÉ** and get some good coffee or ice cream. You can for instance sit down outside on a bench and enjoy the view of the renovated Cork Pavilion or the blooming flower beds between which beautiful peacocks walk around like in a promenade.

Růžová kavárna

František Paluš

e-mail: icparkkonopiste@seznam.cz

opened according to the opening hours of the Rose Garden in the park

Do you need more than just one day to see Konopiště? Then you are kindly invited to **PENSION KONOPIŠTĚ******. You can take a choice in six stylishly furnished apartments; you can enjoy your breakfast in the glassed lounge while overlooking the unique motorcycle exhibits. The local museum offers representative exhibition of history related to JAWA company, including unique trophies documenting the achievements of Czech motorcycle brands in the 20th century. The museum is also used as the official museum for the facto-

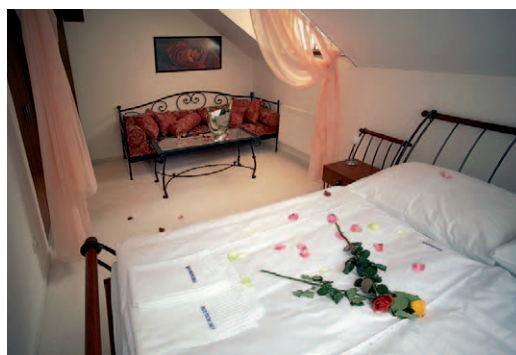
ry. Would you like to see more? Then you can visit the Motorcycle and Technical Museum in the nearby village Netvořice. Mr. Jiří Stibůrek is a collector and author of the museum exhibits as well as those in the exhibition of Konopiště. Beside JAWA motorcycles there are cars, tricycles, wheelchairs, motorcycles with sidecars, special stationary motors, vintage tractors as well as technically historical attractions exhibited herein. Altogether about 200 exhibits many of which are really unique.

**Pension
Konopiště**

★★★★

Pension Konopiště****
Konopiště 30, 256 01 Benešov
tel.: +420 737 230 294
+420 317 702 658
e-mail: info@pension-konopiste.cz
<http://www.konopiste.eu>





Are you fed up with history and willing to get some active rest time instead? Then you shall visit **S-CENTRE** in Benešov. Rich range of both sportive and relaxation activities is available for visitors of all age categories. The sport complex includes tennis and badminton courts, beach volleyball court, hall for small-sized football, hall for aerobic,

Finnish and steam sauna, whirlpool, outdoor pool, bowling and many other facilities. You can enjoy excellent cuisine in the restaurant with summer terrace, mostly Italian one. The services include the hotel with accommodation facilities for up to 62 people and lounges with conference equipment.



S-CENTRUM
U Vodárny 2 215, 256 01 Benešov
tel.: +420 317 750 001
e-mail: info@scentrum.eu
objednavky@scentrum.eu
<http://www.scentrum.eu>



You can also visit the **Golf&Spa Resort Konopiště** in the nearby village Tvoršovice. Well, you do not have to be a real golf player – you may enjoy services of the local spa or just

have a walk through landscaped park and stop at the statue of **Zdeněk Štěpánek**, an actor and native of Tvoršovice.



TOWN BENEŠOV is situated nearly 40km south-east of Prague, within the sight area of the river Sázava. It has wrongly been called as the Konopiště Castle surrounding area. Its history actually began much earlier than the history of the mansion whose last private owner was Franz Ferdinand d'Este, successor to the Austro-Hungarian throne. You

can see it for example on the ruin of Franciscan Monastery in Benešov district Karlov. This was founded in 1247 by Tobiáš of Benešov who was a provost in Vyšehrad. At the sight distance of the monastery there is a brick bell tower with one of the oldest bells in Bohemia region. The bell was cast in 1322 by a craftsman called Rudger.



Just a few steps away but also the time of several centuries, this is the distance between Karlov and the centre of Benešov. The square called Malé Náměstí includes a Secession style building of the Museum of Art and Design with an exhibition of drawing and graphics of Czech artists of the 20th century. In this building there is also the museum of Podblanicko region that invites you to an imaginary trip leading to the history of Benešov and the history of the 102nd Infantry Regiment. The trip is closely associated with both the town and Franz Ferdinand d'Este.

It is quite easy to walk through Benešov on feet. You can take a rest time for your tired legs while riding on the eco-train which will take you to all interesting places that you should not miss when visiting this town. The ride will bring you to



Město Benešov
Masarykovo náměstí 100
256 01 Benešov
tel.: +420 317 754 111
e-mail: mu-bene@benesov-city.cz
<http://www.benesov-city.cz>

the nearby castle Konopiště and back. While in Benešov, you can also enjoy adventurous and nice day with your children on the children's trail "Going with Honey to See a Bear" that includes several different quizzes and puzzles. There is a hard-earned treasure waiting for the children at the end of this trail. You can also follow the footsteps of the Habsburgs on a guided tour that is 9 kilometres long.

Both places are in imaginary ways connected by the **BREWERY FERDINAND**. This is the brewery that Archduke Franz Ferdinand d'Este had moved from Konopiště to Benešov in 1897. Production of local beer is still based on the original recipe that uses barley malt taken from own floor malt house as well as the best saaz hop. Beer Ferdinand is characterized by its golden colour, sparkling clarity, strong taste, fullness of flavour and high foam. History is also reflected in names; for

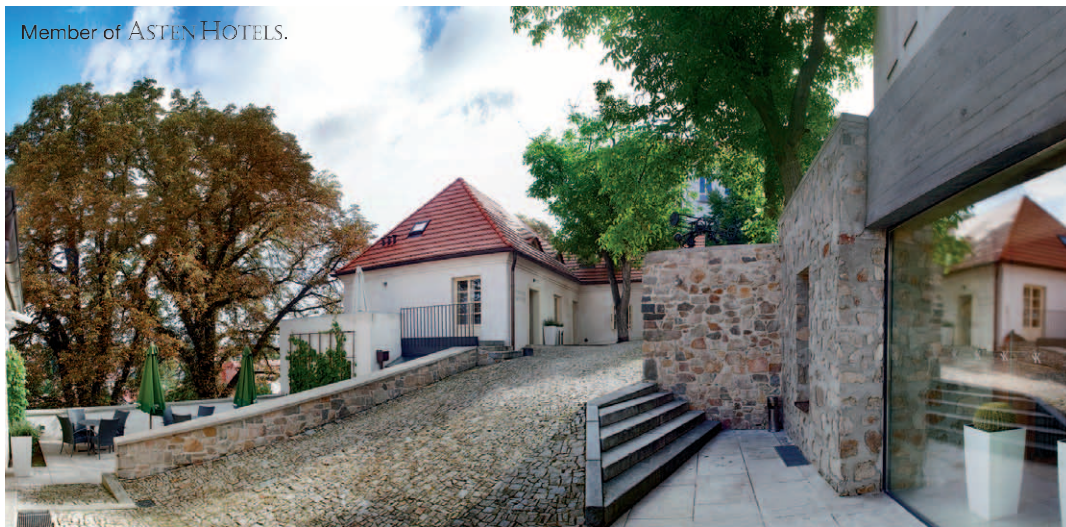


Pivovar Ferdinand a.s.
Táborská 306, 256 01 Benešov
tel.: +420 317 722 511
e-mail: ferdinand@pivovarferdinand.cz
<http://www.pivovarferdinand.cz>

example in the semi-dark special product Sedm Kulí (seven bullets) or in the light lager d'Este. Brewery also provides the visitors with tours of selected plants which are available on request. While in the courtyard, you can see the wired hop field or you can walk through the outdoor instructive trail.



Member of ASTEN HOTELS.



In the historic part of Benešov and very near the centre of the town there is the **BELLEVUE KARLOV HOTEL** with elegant garden, terrace and restaurant. It represents new concept and trends related to a rural settlement. Ladislav Lábus, an architect, created its current appearance. The building won a prestigious award in the competition called The Best of Reality in 2008.

You are invited to come and discover the unique atmosphere of modern architecture with first-class services that are able to satisfy even the most demanding guests. The non-smoking hotel consists of 28 rooms and apartments located in several

houses connected by an underground passageway. It also includes two rooms for accommodation with pets. Then it also includes sauna, whirlpool and massages.

Restaurant Na Karlově can provide you with a remarkable gastronomic experience. You can get convinced of the skills of this culinary team. You can taste saffrony risotto with grilled cherry tomatoes and leaves of Parmesan cheese or beef cheeks stewed on red wine with soft mashed potatoes. You may come together with your children or friends to enjoy one of the thematic weekends; you will experience an evening full of fun and surprises.



Bellevue hotel Karlov

Na Karlově 97, 256 01 Benešov
tel.: +420 317 700 825, +420 603 905 621
e-mail: infokarlov@bellevuehotels.cz
<http://www.bellevuehotelkarlov.cz>
<http://www.astenhotels.com>



On the way ten kilometres distant from Benešov there is another noble residence – **JEMNIŠTĚ CASTLE**. This castle has been associated with the family of Sternbergs since 1868. Jiří Sternberg currently lives here with his wife Petra, son Vojtěch Václav and daughter Isabela. They renovated the memorial building; they opened it to the public and arranged exhibitions. They also opened Café Custozza where they sell genuine homemade desserts. Then they furnished romantic apartments. For their guests they prepare own game meat. They created the halls for weddings; established Alpinium and Rosarium in the park and planted hundreds of plants and trees. Come to convince yourselves! Or you can also get impressed by the unique style of the brand *Hunting Dress Code* Petra Sternberg from the workshop of castle lady.

Richly furnished rooms provide the impression as if their residents have just left somewhere for a while. Open suitcase, clothes laid out on the bed, prepared table in the dining room, decorated tea service in the lounge – just pour a golden drink to it and dip your lips... How about to feel a real life of castle lords? Do you want to try it by yourselves? All you

have to do for this is just about renting one of the apartments in the castle. And then you can just make your imagination free. Who were the people in the past that lay down on bed with the sky above, used a hand-painted sink, got warmed by the fire in the fireplace...? You can also take a walk through landscaped gardens or have a picnic prepared in the corners of the castle park.



Zámek Jemniště s.r.o.

Jemniště 1, 257 01 Postupice

tel.: +420 731 903 995

tel./fax: +420 317 796 212

e-mail: zamek@jemniste.cz

<http://www.jemniste.cz>

<http://www.huntingdresscode.com>

<https://www.facebook.com/jemniste>

<https://www.facebook.com/huntingdresscode>



ZÁMEK JEMNIŠTĚ

Barokní perla středních Čech

Opening times:

January – March

April, May

June, September

July, August

October

November, December only by prior arrangement

only by prior appointment

Sat, Sun and public holidays

daily, except Monday

daily

Sat, Sun and public holidays

10:00 – 16:30

10:00 – 17:30

09:00 – 18:30

10:00 – 17:30



NEVEKLOV REGION





Tloskov has been connected to Neveklov since 1550. One of its owners was a significant Czech industrialist, Čeněk Vincent Daněk (1826–1893), co-founder of Breitfeld and Daněk, the company which later became part of Českomoravská-Kolben-Daněk (ČKD), the largest engineering company in the former Czechoslovakia.

You can go from Neveklov to the **mountain Neštětická**. On this mountain is a lookout tower built in 1927. This tower commemorates the brutal suppression of peasant rebellions in 1627. You will reach it when going from the village **Chvojíněk** where you can see an early Gothic church of St. Václav that was also used as the background of the film Kytice.

The region **Neveklovsko** lies in the wedge between the rivers Vltava and Sázava. It is a picturesque countryside with many tourist attractions. Right in the centre of **NEVEKLOV TOWN** there is the town hall; originally a Renaissance building from 1598, currently used as a bank branch and cinema. The monument located in the middle of the square of Jan Heřman is a **memento** of ejection of inhabitants of the region during the Second World War – the region was used as a ground for weapon training site of SS soldiers in those times. The **St. Havel church** is also worth seeing. This church has probably been existing since the 13th century. Later on, it was rebuilt in Baroque style. However, its masonry seems to be mainly Gothic. Neveklov is also a place where ancestors of the famous family of **Kubelík** were born; Jan Kubelík – violin virtuoso of world-wide reputation, Rafael Kubelík – legendary conductor and René – excellent violinist who is currently concertmaster of the Philharmonic Orchestra in Konstanz, Germany. Virtuoso Jan Kubelík has his memorial at the local Sokol house.

The film-makers were also impressed by the noble pond near Neveklov which has been used in the film Vesničko Má středisková. The entire region of Neveklovsko is interwoven with the system of hiking and biking trails. There is for example a popular cycle route **Greenways Prague-Vienna** stretching through this region too.



Neveklov Region

You can also see the local countryside while sitting on horseback. You can stop in the **FARM HEROUTICE** that specializes in horse breeding and agro-tourism. In the unspoiled

nature just nearby the water dam Slapy, the farmers operate stables, arena for equestrian events, indoor riding course, accommodation and stylish restaurant.



Farma Heroutice

Miloslav a Jana Perníčkovi
Heroutice 1, 257 56 Neveklov
tel.: +420 317 741 392, +420 604 232 834
e-mail: heroutice@heroutice.cz
<http://www.heroutice.cz>



Castle which is called **Jablonná nad Vltavou** is also worth seeing. This castle is listed among cultural monuments of the Czech Re-

public. You can explore the local unique exhibition of classic furniture and interior equipment supplied by reputable companies.



However, the region of Slapy offers much more. Do you want to walk in the trees? It is not impossible. Just go to the **ROPE PARK NEAR SLAPY**, in the canyon above the stream flowing to the bay related to the water dam at the foot of the Živohošť bridge. Under supervision of instructors, you can get one of the three routes leading through the valley of the magic.

Entry is open even for small visitors – there is a **Baby Park** waiting for them. When the kids are already taller and not so interested in toys for babies, however they are still not able to get a route on the Rope Park, then they can try out the “junior” version built at the two-metre height and protected by guarding nets. And if you prefer being on a solid ground, you can take a ride on **electric scooters** around the rope park. There is a new attraction in the park – **Mini Zip Park** – rides for children.



Nebřich, 257 44 Netvořice
tel.: +420 602 185 231 (Dita)
+420 736 676 565 (Vašek)

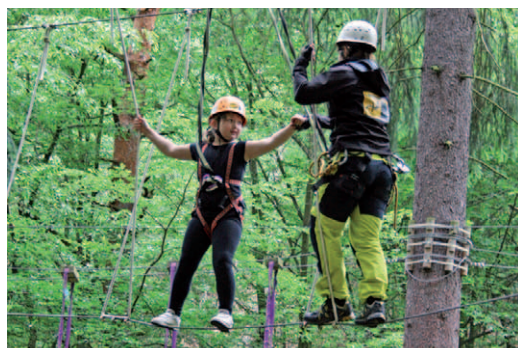
April, May, June, September, October + Holidays

Sat – Sun 10:00 – 17:00

July, August
daily 10:00 – 18:00

You can basically visit the Rope Park at any day or hour. If outside the business hours, you must be at least 15 persons and it is required to get arrangement in advance.

Personal trainer shall be ordered by phone at least one day in advance!



Křečovice

While wandering in the region, you can also visit the village Křečovice situated near the water dam Slapy. You will probably know the village. It is simply due to the fact that this village is quite popular among film-makers. For example, there were films *Farářův Konec* or *Není Sirotek jako Sirotek*

made right here. However, the real fame came together with the comedy of Jiří Menzel *Vesničko Má Středisková*. Well, you can see here much more than just a yard of quirky driver Pávek or a house of his co-driver Otík Rákosník.

Music composer **Josef Suk** was also born here in Křečovice – you can see his birth room and the museum. Linden alley which was awarded as Alley of the Central Bohemia Region 2012 is also named according to the composer. The **St. Lukáš church** is also worth seeing. You can get unusual experiences if travelling to the surrounding areas too. For instance to the rock hills **Psané Skály** named after the ancient religious texts carved in stone. You can also see the former Celtic **Oppidum Hrazany** right here.



Obec Křečovice

Křečovice 9, 257 56 Neveklov

<http://www.obec-krecovice.cz>





Are you looking for a place for mental relaxation and meditation? You will find it in the **MONASTERY KLÁŠTER NAŠÍ PANÍ NAD VLTAVOU** which was built in the nearby village Poličany by Trapists (Cistercian order with strict observance). You can take part in the liturgy of nuns in the monastery church. If you want to spend longer time in silence and peace, you may use the services of the local guest house. This guest house includes a small shop with products of monastery of Poličany and monastic products from other monasteries of the Czech Republic, Italy and

France. You can taste biscuits, jams, chocolates, candies or herbal tea!

Klášter Naší Paní nad Vltavou

Poličany – Křečovice 10

257 56 Neveklov

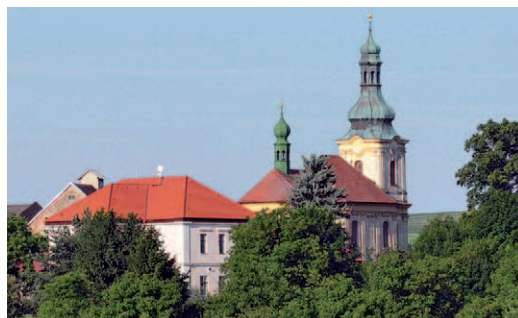
e-mail: sestrytrap@gmail.com (Guesthouse)

coenobium.trap@volny.cz (Products)

tel.: +420 731 604 168, +420 312 312 004

When travelling in the hilly countryside between the Sázava and Vltava rivers, you should not miss the small **TOWN MARŠOVICE**. Its dominant building is the Church of Annunciation, built between 1774 and 1775. You can see the church well from all sides around. It was therefore nicknamed as “Hradčany”, according to Prague Castle. While going to explore the surrounding area – you will see rectory house, morgue with ossuary or the statue of St. Vojtěch.

You can also take a nice walk or bike ride in the surrounding area. You will be led to the unjustly neglected castle ruins Stájice. The castle was probably built at the beginning of the 14th century on the nearby hill Stejc. However, there are only some overgrown mounds remaining in the middle of the forest. History of the village Zaječí is even older. This village forms one of the parts of Maršovice – the first mention comes from the times of 999. And while wandering through the local picturesque countryside, you can see many repaired chapels and calvaries.



Městys Maršovice

Maršovice 89, 257 55

<http://www.mestysmaršovice.cz>



Are you ready for obstacles whose overcoming requires much more than just good physical condition? Then you should head to **TEPfaktor** near Chotilsko; on the opposite bank of the Vltava river. Alone or with a group of friends, you will walk through the labyrinth of tasks whose solution will also require your sense of logic, patience and skills. You will not manage to pass the game inspired by the TV competition **Fort Boyard** if not having those features. Wide variation of obstacles will try out your endurance, commitment and sense of team cooperation. You will certainly not be bored.

In addition to great entertainment, you can also enjoy some moments of tranquillity on a roofed beach with a bar. It is ideal for relaxation, picnic or a wild event... Don't you want to get back home? Well, you may spend the night here – perhaps in some of the original bungalows, in the hammock with the starry sky overhead and with the sound of sea and rain forest.

TEPfaktor

Chotilsko, 262 03 Příbram

e-mail: info@tepfaktor.cz, tel.: +420 777 000 927

<http://www.tepfaktor.cz>

Mon – Sun 9:00 – 21:00





Are you looking for an oasis of tranquillity? Then you should visit the **BAROQUE ESTATE BENICE**. This estate is situated in a lonely place in a beautiful, slightly wavy countryside full of forests and meadows, ten kilometres distant from the castle of Konopiště. The unique building which is listed in the cultural heritage list was built in the shape of an equilateral triangle that represented the symbol of St. Anna.

There are Old Kladruby horses here in the local stud. These horses belong to the oldest continuously kept breeds in the world. You can ride on horseback or in a contemporary carriage drawn by imperial horses. You can sit in a restaurant with home cuisine and bread or relax in stylish attic rooms. Children may palm and feed the pets and ride the ponies or donkeys.



Barokní statek BeNice
Benice 1, 257 44 Netvořice
tel.: +420 724 054 267
e-mail: barokni@statekbenice.cz, www.favory.cz
www.facebook.com/baroknistatekbenice



Netvořice

NETVOŘICE village is situated only eight kilometres from Neveklov. The first written mention about this village comes from the year of 1205. However, this region was already inhabited in the Stone Age and Bronze Age according to archaeological findings. You can have a look at the history of this region, for example as visiting the **town museum** with permanent exhibition of Týnec stoneware, unique collection of plates, bowls, tiles and other products of the ceased factory from the close town Týnec nad Sázavou.

Městské muzeum Netvořice

Muzejní 46, 257 44 Netvořice

tel.: +420 724 880 713

e-mail: mestskemuzeum@netvorice.cz

<http://www.netvorice.cz>



THE FAMILY-HELD MUSEUM OF ENAMEL PRODUCTS

is definitely worth visiting. Here you can see products of Czech and Slovak enamel plants from the second half of the 19th century. You can enjoy beauty, colourfulness, shape diversity and usefulness of teapots, cups, pots, jugs and pans of households of our ancestors. Then you can also buy a special gift or souvenir in the local shop. Do not forget to visit the stylish junk shop too. If you are feeling tired of your long journey, do not hesitate to lay your head in the stylish dormitory.

Rodinné muzejíčko smaltu

Pražská 13, 257 44 Netvořice

tel.: +420 776 151 343

e-mail: jindrasmidova@centrum.cz

<http://www.muzeumsmaltu.cz>

<http://www.ukockyzakominem.cz>



People who are keen on motorcycles will certainly enjoy their stay in Netvořice too. You can visit the local **MOTORCYCLE AND TECHNICAL MUSEUM** dedicated to the old-time technical skills of Czech designers. Beside 120 motorcycles there are cars, tricycles, wheelchairs, motorcycles with side-cars, vintage tractors. The exhibition forms a part of the unique collection of Jiří Stibůrek. Other exhibits are shown in Jiří Stibůrek's Museum of Motorcycles in Konopiště.

A collection of motorcycles

Zelená 65, 257 44 Netvořice

tel.: +420 317 722 254

e-mail: stiburek.j@eltsen.cz

June Sat, Sun 10:00 – 17:00

July, August Tue – Sun 10:00 – 17:00



There is the **HOTEL VŠETICE** located close to the village Netvořice. This hotel belongs to the farmhouse Všetice. The hotel provides 43 beds in stylish rooms with 2 to 4 beds and the apartments. It is also possible to increase the capacity to 49 beds by using extra beds. The large garden with four

ponds is the ideal place for weddings or corporate and family events. The stylish restaurant features an outdoor terrace, dancing floor and concert stage. The premises include the indoor riding hall with sand riding course.



Hotel Všetice

Statek Všetice

Hotel Všetice

Všetice 6, 257 44 Netvořice

tel.: +420 724 522 758

e-mail: hotel@vsetice.cz

<http://www.vsetice.cz>



JÍLOVÉ REGION





When travelling in the region of Posázaví, you cannot miss the royal gold-mining town **JÍLOVÉ U PRAHY**. Lovers of history, tourism and adrenaline experiences will certainly enjoy this place. The town was founded in the 13th century as a mining settlement. Its rich history is closely associated with gold mining.

There are three important memorials of Pre-Hussite period located in the historical centre of the town. One of them is the **church of St. Vojtěch** with the unique Gothic board-shaped altar – the interior was used in the Oscar-winning film *Amadeus* (Miloš Forman). The dominant of the square belongs to the **town hall** with preserved municipal round-house which was created on the basis of the the original tower-shaped fortress.

The **house Mince** is also an important memorial. This house was used as a centre for managing the process of gold mining and tax collection in the past. It is currently used as the **regional museum** with permanent exhibitions aimed to extraction and processing of gold, history of the region and tramping as well as the nature of the region Posázaví. These permanent exhibitions are usually complemented by other exhibitions with different topics during the year time.

The picturesque countryside of the Sázava river valley also encourages for trips. This valley is surrounded by massive uplands. There are many marked hiking trails here. They will lead you for example to the Žampach Bridge which belongs to the highest stone railway bridges in the country. They can also lead you to the overlooking **tower on the hill Pepř** offering view to the wide landscape.



Do you long for adventure and self-overcoming? Well, you should go to explore the drifts in gold-mining territory of Jílové u Prahy. For example, the drift Josef in Dolní Studený or the drift of St. Anthony of Padua in which the last work was carried out in the first half of the 18th century. The youngest era of gold mining in the region of Jílové u Prahy is reminded by the drift of Halíř which was founded in the middle of the 20th century.

Kulturní centrum a knihovna

Masarykovo náměstí 1
254 01 Jílové u Prahy
tel.: +420 241 021 976
e-mail: kic@jilove.cz
<http://www.jilove.cz>



Jílové u Prahy

You can also get stylish refreshment in the town Jílové u Prahy. For example, you can visit the **RESTAURANT FLORIAN** which is located in an old townhouse in the square. This house was formerly owned by the master Edward Kelly, the renowned alchemist of Emperor Rudolf II. You can take a choice of dishes related to the Bohemian region, those which are regularly modified according to particular season and current offer of raw materials of Czech suppliers and farmers from the surrounding areas. Get tempted especially by mature beef meat from bio-eco breeding of Jílové u Prahy. This meat is processed by baking, slow stewing and grilling on the hot charcoal.

Restaurace Florian

Masarykovo náměstí 25, 254 01 Jílové u Prahy

tel.: +420 241 950 625

e-mail: restaurace@florianjilove.cz

<http://florianjilove.cz>



The ground floor restaurant with fireplace has a total capacity of 80 seats. On the first floor you can find the main hall with a fireplace and gallery. There can be up to 110 people present here – it is the ideal place for social and cultural events. There is also a separate lounge with 18 seats available to be used for smaller events. **In the summer time we can open the outdoor area.**

The trips can be carried out in the surrounding countryside too. There is the **forest Hornopožárský** and its highest point **Grybla**. It is situated in the south-east direction of Jílové u Prahy, on the right bank of the Sázava river.

There are marked hiking and biking trails stretching through the forest. Among others destinations, they can also lead you to the protected natural monument Vlčí Rokle. This is the chine overgrown with original beech trees which are even 200 years old. The slopes are covered by the “stone sea” formed by huge granite boulders. You can reach this place from the village **Pohoří**, for example.

It also includes the village **Chotouň** which becomes a paradise for skiers in the winter time. The local ski resort features the slope with artificial snow. This slope is especially suitable for beginners and intermediate skiers. It also includes three ski lifts, school for skiing and snowboarding, serviced rental shop and refreshment stall.

Ski areál Chotouň

<http://www.vlekychotoun.cz>





Do you like military history? Well, you should visit the **MILITARY TECHNICAL MUSEUM** located in the former artillery barracks between the villages Krhanice and Lešany. And please, be aware that you will spend a few hours here. It takes some time to go through the large exhibition with more than 700 historic tanks, cannons, motorcycles, armoured vehicles, trucks, passenger military vehicles, missile technology, engineering equipment and logistic material originating from the period stretching from the year of 1890 to the current time. The museum equipment is exhibited in ten halls, under six shelters and also outdoors. The collections are really unique as for their range and composition. They rank among the most important European institutions of this type. The admission to the museum is free. There are several events associated with introduction of military equipment in motion held every year at the opening ceremony and during the summer season. The museum is accessible for free.



Vojenské technické muzeum Lešany

257 42 Krhanice

tel.: +420 973 296 161

e-mail: museum@army.cz

<http://www.vhu.cz>



And after you get here, you should stop in the nearby village **Lešany**, the picturesque village the poet **František Hrubín** grew up. The story of his famous Romance for Křídlovku takes place

right here. When exploring the surrounding areas, you can stop in the local castle converted into the shape of pension with a restaurant, pizzeria, pool or bowling.

RIVERS SÁZAVA AND VLTAVA



Rivers Sázava and Vltava

You can go with us upstream the river Sázava. We can start in the place where the Golden River (as it was once renamed by hikers) flows into the river Vltava. There is the **island of St. Kilian** situated in the close vicinity of the junction. In the shade of tall trees, the remains of a Benedictine monastery

are hidden. The monastery was probably founded by Prince Boleslav II in 999. The monastery was destroyed in the attack of Hussites in 1420. Then it was never restored again. It also included the fortified **settlement Sekanka** located on the rocky bill above the confluence. It ceased to exist after 1278.

But first let us make a small detour to the water dam of Štěchovice. The waterworks were commissioned in 1944. The dam is 120 metres long and 22,5 metres high. On the left side there is the power plant with two Kaplan turbines. This power plant compensates the outflow from the dam lake under the power plant of Slapy. Below the power plant courtyard there is the high pressure power plant of Štěchovice II fitted with the

reverse Francis turbine. It is powered by water from the upper reservoir on the top of the hill Homole which is filled with water at the time when the electricity power is sufficient. You can visit the Information Centre of hydroelectric power plants in Štěchovice upon a previous appointment during the entire year time, see the phone numbers 607 107 453, 608 308 759. You can order the tours on weekdays from 7 to 15 o'clock.



But let us go back to Sázava. On the left bank and just a few kilometres apart from the confluence with the Vltava River there is the **VILLAGE HRADIŠTKO** which is one of the largest recreational areas around the capital city Prague. Its history experienced the sad events of violent expulsion of the population during the Second World War and construction of the military training site for weapon exercises of SS Army.

hornbeams and beeches that cover the slopes. It is the only one location of its appearance here in the Czech Republic.

Obec Hradištko

<http://www.hradistko.cz>



The tragic moments are reminded by the instructive trail Vystěhované Hradištko. Hradištko includes the village **Pikovice** which is considered as the cradle of tramping in the Czech Republic. The hill **Medník** which is 416 metres high and which rises up above Pikovice village is a significant botanical locality. There is a rare plant of the liliaceous family – **Dog's Tooth** – growing up under the tree tops of oaks,

The popular **trail Posázavská** begins right in Pikovice. It was designed by Josef Kliment (1858–1938), a Prague teacher and long-time member of the tourist club. The first section was inaugurated in 1920. The several-kilometre-long section between Pikovice and Žampach belongs to the most attractive parts of the trail. Do you want to make sure? Well, you should climb up to the **viewpoints** named after **Rais** and **Kliment**.

Pikovická Jehla (Needle of Pikovice) is an interesting rock formation; it is also called **Pikovický Komín**. It was here on the right bank of the Sázava river even before the construction of the local railway line. The line goes in the close neighbourhood. It is stretching up to the height of 20 metres from the line. It is also more than 40 metres high while taken from the river level. However, only climbers can enjoy the view from the summit fitted with a wooden cross.

Brejlov

When you go upstream the river Sázava, you will get to **Kamenný Přívoz**. You can visit the small church of St. Ludmila, located on the rocky hillside above the mill Podskalský.

While standing aside the river, you may recall the old times when wood was floated here – Jan Morávek, the local native and writer, described lives of the “floaters” in his books.

The village **Prosečnice** is not much distant from here. Workers in local quarries were extracting stones. These stones were also used for paving the courtyard of Prague Castle. Extraction works experienced the greatest boom in the late 19th century when the quarries were owned by Archduke Franz Ferdinand d'Este – the stones of Prosečnice were transported even to Vienna in those times. How? On the newly built railway though. Sanatorium for patients suffering from lung diseases was opened in Prosečnice in 1922. That was the largest sanatorium in the country. The sanatorium was used as a school for so-called panzer grenadiers during the Second World War. That school belonged to the SS training site. The way from Prosečnice to **Krhanice** is only three kilometres long. Actor Otakar Brousek (1924–2014) was born right here.

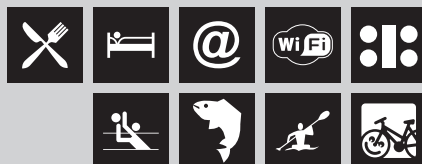


There is the **MILL BREJLOV** situated on the left bank of the Sázava river, three kilometres from Týnec. The hotel building is washed by the river on one side and the grassy area with seven cottages is situated on the other side. This area also includes the playgrounds for volleyball and football tennis, bike

room, large fireplace, parking place and the mole for convenient boat landing. The countryside restaurant and garden with homemade specialities operate every year beginning in the month of April. There are grilled meat and fish, fresh vegetable salads, homemade desserts and sherbet glasses.



Mlýn Brejlov
Břežany 29
257 41 Týnec nad Sázavou
tel.: +420 774 443 854
e-mail: katerina@brejlov.cz
<http://www.brejlov.cz>
Facebook: Mlýn Brejlov



Týnec nad Sázavou

Týnec nad Sázavou, the town which is famous for renowned stoneware and motorcycles of JAWA. Count Franz Josef of Vrtba founded stoneware manufacture right here in 1791. In 1812 he built a new factory building in the Classicist style. This building is now used as a **HOTEL** and **COMMUNITY**

CENTRE. There are also the multi-purpose hall, training rooms and large garden with summer stage. Tourist Information Centre provides a wide range of services. It also operates as the reception of the hotel and seasonal hostel.



Hotel TÝNEC

Klusáčkova 2, 257 41 Týnec nad Sázavou

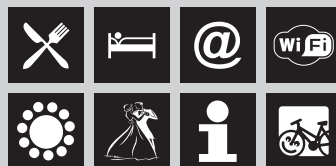
tel.: +420 775 290 032/infocentrum

+420 774 443 854/ubytování

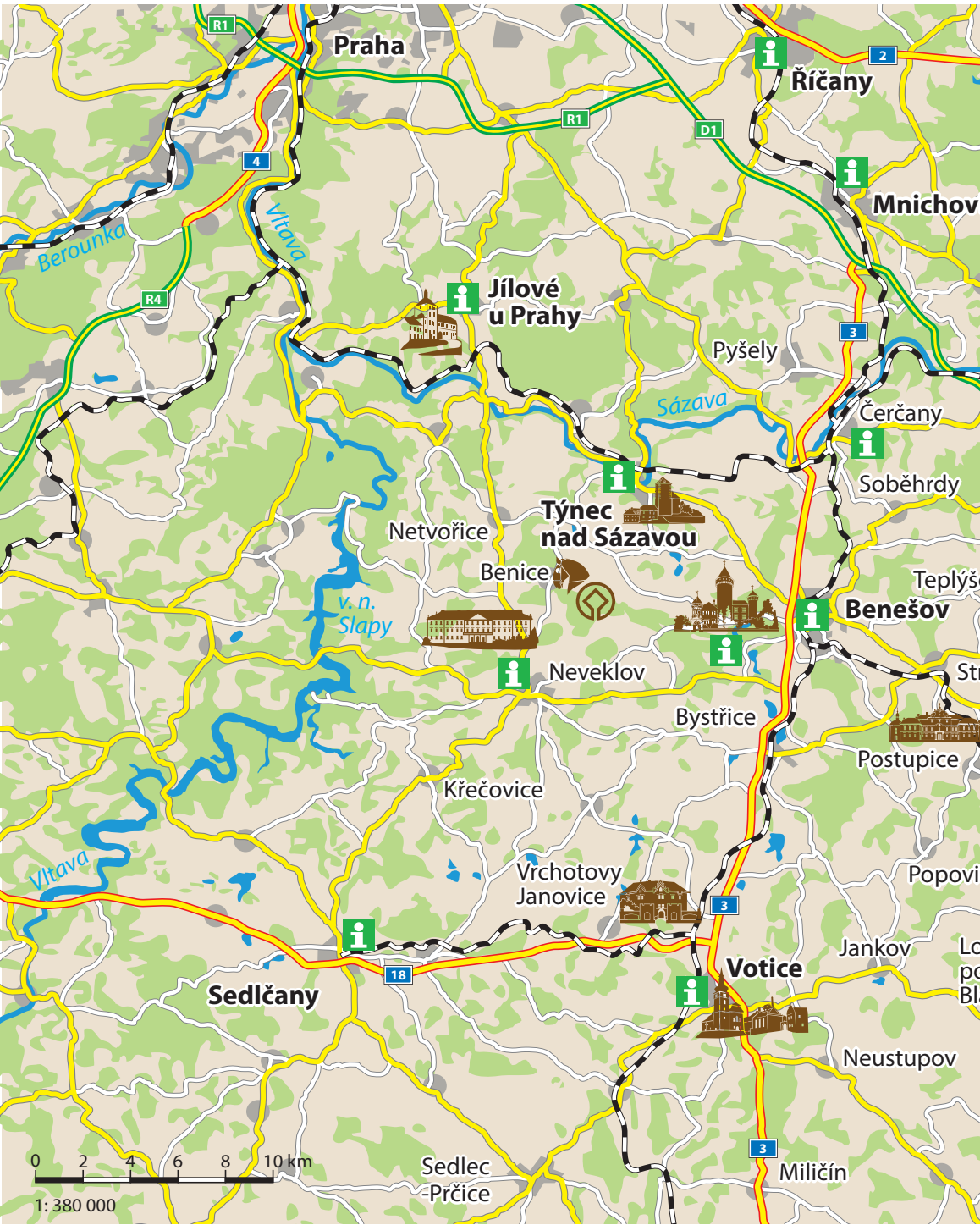
e-mail: lucie@hoteltynec.cz

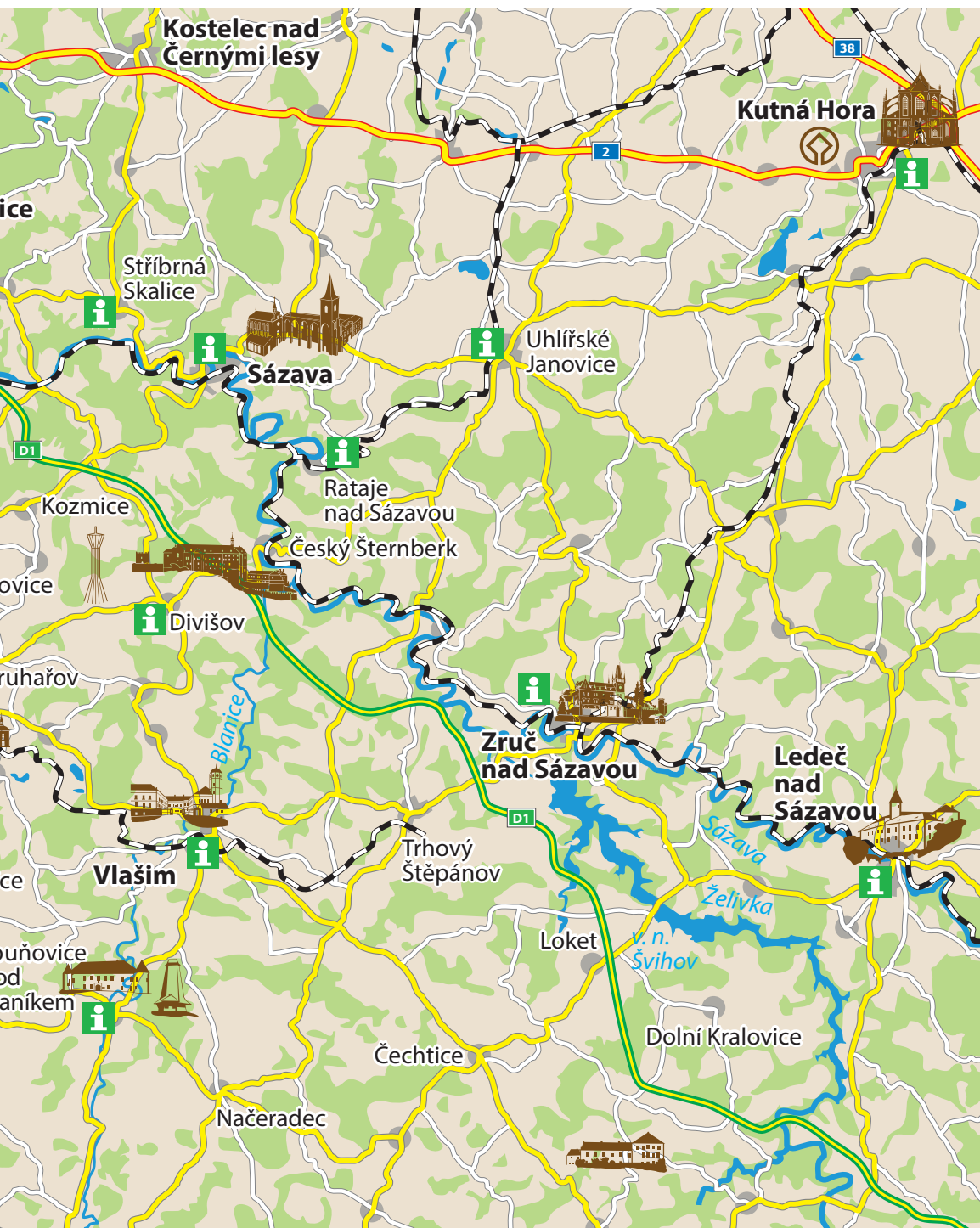
<http://www.hoteltynec.cz>

Facebook: Hotel Týnec – Společenské centrum



Further and detailed information about the region can be found at www.posazavi.com





Týnec nad Sázavou



Castle with the museum, gallery and the precious exhibition of Týnec stoneware are considered as a real jewel of the town **TÝNEC NAD SÁZAVOU**. The castle includes the stone Romanic rotunda from the 11th century and also the watch-tower located in the prismatic Gothic tower from the 13th century which is also a summer residence of protected bats (*Myotis Myotis*). Popular tourist destinations also include the Gothic Church of St. Šimon and Juda and the Neo-Renaissance house U Micků.

Industrial production was started in 1930 by **Ing. František Janeček** who built up a metal foundry on the right bank of the river (now METAZ). He also re-built the former spinning-mill on the left bank of the river into the form of a factory producing automobiles with the brand Minor and then later motorcycles

JAWA, especially the famous “Pérák” and “Kývačka”. František Janeček’s stay in Týnec nad Sázavou is also reminded by the three-storey round-shaped villa from the First Republic times, in addition to the above-mentioned two factories. However, the villa is not open to the wide public.



**TÝNEC
NAD SÁZAVOU**
BRÁNA DO POSÁZAVÍ

<http://www.mestotytec.cz>
<http://www.tyneckevlneni.cz>





Well, you can see and experience much more in Týnec. Do you long for motion? You can visit the multi-purpose playground or skatepark. You can try out the rope pyramid. Well, you can use one of the cycling routes in the region or the instructive trail with geocaching. You can walk through the forest park. Do you want to go shopping? Try the shopping zone for pedestrians. Meanwhile, children can play in the Parent Centre Motýlek (butterfly). And you may get accommodated for instance in a campsite by the river.

There are ruins of the castle **Zbořený Kostelec** located just near the town Týnec nad Sázavou. The castle was built in the 14th century to guard the trading route which led across the Sázava river. Allegedly, the Czech king Václav II also participated in establishment of the castle.



Týnec nad Sázavou

However, Týnec nad Sázavou is primarily known a centre for paddlers. The outdoor centre **BISPORT** is based right here. The staff can lend you boats; prepare routes of paddling trips on the Sázava river for you. They will provide you with complex service, including accommodation. Do you prefer riding

a bike to the boat? This is not a problem either – you can borrow bikes and get some information of where to go to experience real adventure. And if you still feel that you need more, you can test your courage at the local rope park.



Bisport s.r.o.

Ing. Fr. Janečka 511

257 41 Týnec nad Sázavou

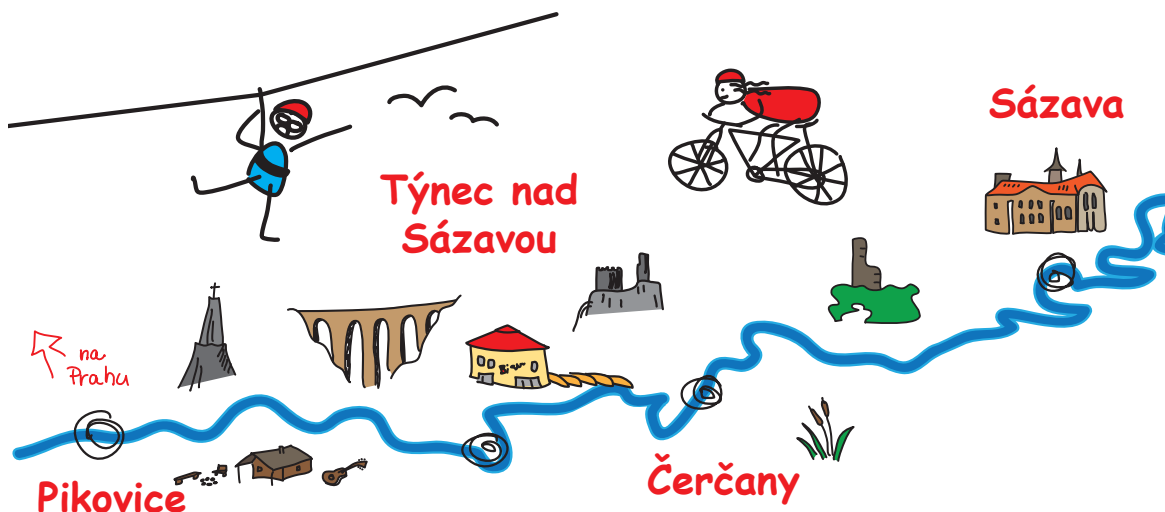
tel.: +420 317 701 460

+420 777 335 618

e-mail: info@bisport.cz

<http://www.bisport.cz>

Facebook: Bisport, Google+: Půjčovna lodí a kol





You do not have to walk a long way to refresh your energy. There is the **RESTAURANT NAD ŘEKOU** situated together with Bisport under one roof. The restaurant provides specialities of Czech and international cuisine, in-

cluding pizza from a traditional wood oven. You can also enjoy them outside on the terrace with romantic view to the river. Bikers are welcomed here thanks to our successful certification!



Restaurace Nad Řekou

Ing. Františka Janečka 511, 257 41 Týnec nad Sázavou

tel.: +420 608 888 900

e-mail: info@hotelnadrekou.cz

<http://www.hotelnadrekou.cz>



Kácov

Zruč nad Sázavou



Stvořidla



Český
Šternberk



Poříčí nad Sázavou, Čerčany



Active visitors should not forget to visit the nearby **AREA BAROCHOV**. The local outdoor centre provides adventure and romantic experiences for the entire family.

You can overcome yourself in the rope course while climbing in the trees. You can enjoy watching the world while sitting on horseback. Do you long for a real adrenaline? Well, you can try out the Battlefield Live – this is a combat and strategy game with replicas of real weapons.



Areál Barochov

Barochov 7
251 67 Pyšely
tel.: +420 721 110 000
e-mail: info@arealbarochov.cz
<http://www.barochov.cz>
<https://www.facebook.com/arealbarochov>



There is the town **POŘÍČÍ NAD SÁZAVOU** which shall become another target of your journey. The town was founded by merging three historical settlements together. The town can boast of several significant buildings. One of them is the Romanic **Church of St. Petr a Pavel** from the turn of the 11th and 12th centuries; the other building is the **Church of St. Havel** from the early 13th century. The stone bridge over the Sázava river has also a very interesting history. It was built in 1849–1850. The Austrian Emperor Franz Josef I was the first man to walk on the bridge.

History of the town is also inseparably linked with the period of Hussite wars. Jan Žižka fought a winning battle with soldiers of Czech noblemen who stood on the side of the Emperor Sigismund, here in May 1420. The historical event is commemorated by a granite monument from 1924. Poříčí nad Sázavou is also known by motorsport fans, due to the local **autocross track Homolka**. Take a short detour from the Sázava river and visit the village **Mrač**. There is the fortress built up in the 14th century situated on a rocky hill. It is one of the best preserved yeoman fortresses with shell reinforcement in Central Europe.

And now we can go back to the Sázava river. There is the village **ČERČANY** right in front of us. The old water tower «U Sekalů» is one of its dominants. The tower is located by the capping piece of the railway station. The dilapidated building was repaired and saved against demolition by the civic association Posázavský Pacifik. If you want to stay longer in Čerčany, you can use the services of **Tábořiště Paluba**. They provide accommodation in tents fitted with base structure. The premises include the playground with artificial surface, tennis courts, refreshment kiosk

and swimming pool. You can finish your wandering in Posázaví region in the village **Vysoká Lhota**. Take some time to get a tour in the local castle with the museum of carriages, wagons, saddles and harnesses. Many of them were used in popular films, like for instance in the legendary fairy tale *Tři Oříšky pro Popelku* (Three Nuts for Cinderella). In the guided tour, you can see the cellar from the 11th century fitted with torture chamber. You can also see a part of the little castle. You may get some refreshment and buy souvenirs.

Further wandering in the middle course of the Sázava river can be started in the village Lštění, on the left bank of the river. Its foundation is related to establishment of the nearby Slavic settlement that is also mentioned in Cosmas Chronicle. The **church of St. Kliment** is the dominant of the valley;

it was built in the early 14th century. The original British folding bridge of engineering troops (Bailey Bridge) also belongs to interesting technical memorials. It has been connecting the villages Lštění and Čtyřkoly since 1949.



Now leave Lštění for the nearby village **Zlenice**. You can use the ferry boat to cross the river to place of confluence of the Sázava river with the stream Mnichovický. This romantic place which is located in the territory of **Senohraby** municipality belongs to very popular tourist sites. **Public river basins** were created here at the turn of the 19th and 20th centuries. They are still operated to give you pleasant cooling on hot summer days. You may get refreshment in the local **BAŠTÍRNA** which is open from May to mid-September daily from 10 am. You can get something small to eat, roast sausages or enjoy a juicy steak. There are interesting concerts held on the stage every Saturday!

If you prefer walking to swimming, you may climb up to the castle ruins **Zlenice-Hláška**. That castle was founded in the early 14th century. The castle was destroyed during Poděbrady wars in the years 1463–1465. Soldiers of Zdeněk Konopišťský of Sternberg damaged and burned the castle completely. Only the masonry of the tall tower remained preserved, as well as the masonry of residential buildings, gates and perimeter walls with rounded corners and ditches. The remains of the castle and also the hill on which the castle is located are called Hláška (watchtower), according to a small settlement which used to belong to the castle before it was destroyed too. The association called Zlenice has been making all efforts to save this national culture monument. To support these activities, the association organizes cultural and educational events for wide public. You can climb up to the small view tower and look around. The castle core area will be accessible through the newly built footbridge this year.



The **VILLAGE SENOHRABY** is located on the route of **water sprite walks** which connected the region of Posázaví with the neighbouring region of Říčany. They walking routes lead on the existing hiking trails which are fitted with marks or also on the new routes created by restoration of the historic ones. The routes will lead you to interesting places in

Senohraby, Lensedly, Kaliště, Turkovice, Ondřejov, Čtyřkoly and the surrounding areas. The places provide fun and relaxation for people of all age categories. The smallest visitors will be guided by sprite Brčál, known from the book called Bubáci a Hastrmani which was written by Josef Lada, writer and painter.

Stříbrná Skalice, Sázava

There was a housing estate complex **Stará Dubá** located behind the meander of the Sázava river, on foot hill of the rocky bill on the left bank. The complex then later ceased to exist. It consisted of the noble castle, are in front of the castle, town

under the castle, settlement Odranec, siege camp and firing position. The area has been preserved in a very authentic condition. It belongs to the best and most significant buildings of their kind in Europe.



Another target of your trip can be the village **STŘÍBRNÁ SKALICE**. The first traces of inhabitation in the territory come from the Neolithic period. However, the main development was experienced especially in the 15th and 16th centuries in relation to silver extraction. Now you can take tour of the Baroque church of St. Jan Nepomucký (John of Nepomuk) which is situated on the place of the former castle. You can also see the former town hall building of the 18th century. Do you want to know more? Well, you should visit the new information centre located in the

square. The assistant will definitely recommend you a visit to the **Church of St. Jakub Větší in the village Rovná**. The church was built in the 12th century and belongs to the most valuable Czech Romanic monuments. Do you need to take a rest in tranquillity and peace of the unspoilt nature? You can go to the national nature reserve **Ve Studeném**. This nature reserve is located on the left bank of the Sázava river, southeast of Samechov village. The local old forest with beeches, oaks and maples seems to be left abandoned. It slowly acquires the character of a wild forest.

Do you prefer absolute tranquillity and privacy? You will find them in the **PENZION KORÁLEK** located on the left bank of the river here in the Sázava region. You can have a choice of three apartments with poetic names – Říše Snů, Bouřková Romance, Staré Časy (Dreamland, Stormy Romance, Old Times). Two of the apartments are accessible for wheelchairs. Little visitors are also welcomed here. There is a closed garden with children's corner fitted with covered sand pit and slide, trampoline and inflatable pool. Comfortable armchairs in the

roofed pergola invite you for relaxation that may be associated with grilling. If you want to recall the smell of sausages and fire, you can sit down around a campfire on the bank of the Sázava river. There are benches, rods for roasting. The only thing to do is to run to the nearby forest to take some wood...



Penzion Korálek

Na Závrtku 41, 285 06 Sázava

tel. +420 777 597 388

e-mail: olga.karlickova@penzionkoralek.cz

<http://www.penzionkoralek.cz>



You should certainly stop in the town **SÁZAVA** just here nearby. It is one of the most beautiful places in this region. However, one day is not quite enough to visit this town. In the town there are the Slavic settlement from the 8th and 9th centuries, two prehistoric Neolithic settlements and Neolithic limestone quarries. However, the most famous historical period is associated with coming of the Christian **hermit Prokop**. According to the legend, Prokop founded Benedictine **monastery** on a hill above the right bank of the river at the beginning of the 11th century. The monastery became the major centre of Slavic education and literature in the early time of Middle Age. The area is listed as a national culture monument.

Places associated with the Saint Prokop legend will be shown to you by the instructive trail **Votočnice**. The trail leads across the floodplain meadow with artificially made pools. According to the legend, Saint Prokop was turning back right here when ploughing so-called **Devil's groove** together with the devil himself. You shall go to the chapel with a water spring V Lázních; this is the place where Prokop should have met Prince Oldřich – this has been the old pilgrimage place since the immemorial times. Do you long for tranquillity? You will find it in the area of the Church of St. Martin. Visit to **Zeměloň**

may become an uncommon experience. This is the construction of Michael Reynolds, an American architect.

Did you know that **Jiří Voskovec**, actor, writer, playwright and lyricist was born in Sázava? Then later he liked coming back to this place. He together with his colleague **Jan Werich** wrote the famous play West Pocket Revue right here. **Michal Viewegh**, book writer, also described his childhood in Sázava region, in the book *Báječná léta pod psa*.



Národní památkový ústav
správa kláštera v Sázavě
Zámecká 72, 285 06 Sázava
tel.: +420 327 321 177
e-mail: sazava@npu.cz
<http://www.klaster-sazava.cz>

Opening times:

January, February, March	closed	
April, October	Sa, Su, holidays	10:00 – 17:00
Week days only for pre-booked groups		
May, September	Tue – Sun	10:00 – 17:00
June	Tue – Sun	10:00 – 18:15
July, August	Tue – Sun	10:00 – 18:45
November, December	for pre-arranged groups to 21. December	



Sázava, Glassworks František



František Kavalír is another significant personality associated with the Sázava region. he was a founder of the local glass-work factory. The smelting plant in which the new **CENTRE OF GLASS ART** was opened is named after him; it is called **FRANTIŠEK**. You may take a visit to the unique collection of modern glass. Just enter the unique two-storey exhibition hall Noah's Ark and also other parts of the exhibition. There are about 400 works created by glass artists in the International IGS glass workshops in Nový Bor during the period of 1982 to 2006. If you are lucky, you may see glass artists work-

ing in the local workshops in one of two tours. The centre organizes courses for both professionals and general public. It also provides design games for students of elementary and secondary schools.



Centrum sklárského umění
Na Káčku 218, 285 06 Sázava
e-mail: info@cestyskla.cz
<http://www.cestyskla.cz>
út – ne 10:00 – 18:00 hodin

You can overnight in the area **SÁZAVSKÝ OSTROV** (Sázava Island) that provides several different types of accommodation, dining and leisure activities. There are fully equipped apartments and mobile homes available. You may tent or park with caravans in the camp all year long. You can use the shared bathroom facilities with showers. Children will certainly enjoy the playground with a cable car; sport enthusiasts

can play football tennis, football or volleyball. There are Russian skittles, outdoor table tennis, giant trampoline and fireplace. If you wish to ride on the Sázava river, you can rent a punt boat. There is a tavern Sázavská Taverna providing meals in the range from finished and quick meals up to grilling steaks on an open fire. There is also a beach bar providing comfortable relaxation by the river in the summer time.



Kemp Sázavský ostrov, s.r.o.
Poznaňská 297
285 06 Sázava
tel.: +420 602 696 680, +420 724 354 250
e-mail: recepce@sazavskyostrov.cz
<http://www.sazavskyostrov.cz>



While in Sázava, you can head to the little town **RATAJE NAD SÁZAVOU** which is located on a rocky hill between the Sázava river and the stream Živý Potok. The name was given according to ploughers who were working on the local soil. Interesting facts related to the history of the town Rataje nad Sázavou and surrounding areas are available in the museum situated in the local **castle**.

Městys Rataje nad Sázavou
Zámecká 1, 285 07 Rataje nad Sázavou
tel.: +420 327 322 169
e-mail: posta@obecrataje.cz

Farm Prak

You can also go to the **FARM PRAK**, by car, by bike or on foot. The farm is located on a secluded place 15-minute walk from the car park at the castle Český Šternberk. The farm is situated in areas from which the castle was attacked by catapults. You are invited to relax in stylish rooms of the premises in the middle of large meadows. You can enjoy the herd of

Lipican horses whose breeding the farm specializes in and also other livestock. Or you can also walk on the new instructive trail leading to Drahňovice where you can get a tour in the small glassed museum of fire-fighters with historical fire-engine, fire equipment and uniforms, right in the centre of the village.



Statek Prak

257 26 Český Šternberk

tel.: +420 702 277 877, +420 603 832 346

e-mail: ing.jantupy@seznam.cz, pavel.tupy@seznam.cz



Hikers, paddlers and bikers are also invited to the Sternberg's **RESTAURANT POD HRADEM**. The new owner decided to bet on the domestic Czech cuisine. You yourselves may test it.

You shall have a stop here and taste the delicious local cakes; let the "master bartender" to prepare a great beer for you.

You can also enjoy sitting in the outdoor garden during nice weather.

Are you looking for an interesting souvenir from the region of Posázaví? You might be satisfied with some promotional material or a tourist mark; you may take a choice of some of the products of regional producers offered here.

Castle Český Šternberk



Come and see the reason why the **CASTLE ČESKÝ ŠTERNBERK** has been the dominant of the central Sázava region for more than 770 years. There have been 20 generations of Sternbergs living inside the majestic stone residence so far. During the tour you will get familiarized with the stories of those last who lived in the castle in the 19th and 20th centuries. You will have the chance to see the ways of their life. For example, you will see the furniture used in interiors,

fashionable decorations or the first electricity installation in the castle back in the year of 1911. Wonderful collection of copper engravings from the Thirty Years War will be accompanying you during all the route. It is one of the largest monothematic collections of graphic sheets in Europe. Have you already seen the castle and do you want to know anything else? You can take a commented walk or ride around the aristocratic mansion with a tourist guide!



Hrad Český Šternberk
257 27 Český Šternberk 1
tel.: +420 317 855 101
e-mail: info@hradceskysternberk.cz
<http://www.hradceskysternberk.cz>

Opening times:
April, October Sat, Sun, public holidays 09:00 – 17:00
May, September Tues – Sun 09:00 – 17:00
June – August Tues – Sun 09:00 – 18:00
The final tour starts 45 minutes prior to closing time.
The castle is open all year around for pre-booked tour groups.

Český Šternberk



You can get refreshed at **CAFÉ ČESKÝ ŠTERNBERK** at the castle courtyard, after the tour or after a busy trip. Just taste some of the specialties of local cuisine. There is a daily offer of wide selection of desserts, fruit and ice cream sundaes, baked baguettes and cakes. You can have strawberry dumpings, roast turkey-hen with chestnut stuffing or creamy risotto with mushrooms.

If you want to stay here for a longer time, you can use the services of **PARKHOTEL ČESKÝ ŠTERNBERK** located right opposite the castle on the other side of the Sázava river. There are 18 rooms with a magnificent view to the castle and

river. You can enjoy home-made specialties, grilled meat and fish in the local tourist restaurant with outdoor terrace. The dishes can be accompanied by fresh vegetable and fruit salads, homemade desserts and ice-cream sundaes. There is also a beautiful French park inviting for walks and picnics.



Parkhotel Český Šternberk

Český Šternberk 46, 257 26

tel.: +420 774 443 854

e-mail: katerina@brejlov.cz

www.parkhotelceskysternberk.cz

Facebook: Parkhotel Český Šternberk – Café na hradě





If you prefer a family environment, you can visit **PENSION ČTYŘLÍSTEK** which is located within the sight distance from the castle. You can take a choice of four rooms with facilities or a new apartment with a private entrance. In addition to tranquillity which is typical for the area under the castle in a small town, you can enjoy the famous Sternberg cakes – poppy seed, cottage cheese, apple, plum ones... Their excellent smell rises up from the bakery on the pension's ground floor and spreads to the whole square. This is also the reason why the pension can boast of the title REGION OF BLANICE KNIGHTS – regional product*. The bakery belongs to the local grocery shop where the cakes are also sold. You can enjoy them right on the place, for example in a small restaurant garden. You can also have a good coffee or tea with them.



PENSION
ČESKÝ ŠTERNBERK

Pension Čtyřlístek, Hana Filipová

Šternberské koláče, Jan Filip

Český Šternberk 45

257 27 Český Šternberk

tel.: +420 724 359 073

+420 607 177 944

e-mail: pension.ctyrlistek@seznam.cz





Next you can stop in the small **TOWN KÁCOV** which is one of the most popular places in the central region of Posázaví. While being here, you can also get a tour in the newly opened **Baroque castle** where the museum with an exhibition of the history devoted to Kácov town and surrounding areas is held. There is also the exhibition of historical radios and galleries. The castle is connected with another monument building by using a corridor – **parish church of the Nativity of the Virgin Mary**.

In the square you can see the **sculptural group** of the Immaculate Conception of the Virgin Mary with the statues of Fourteen Holy Helpers. Princess Anna Marie Francisca of Tuscany had it built in 1730. Other tourist attractions can be explained on the **instructive trail Okolím Kácova**.

You can have both pleasure and feeling of useful experience when visiting the **brewery Hubertus** in Kácov. This brewery was established back in 1457. If you are interested in the methods of preparing beer, you can get an appointment for a tour. You can sit in the brewery restaurant Šalanda and overnight in the local hotel.

Městys Kácov

Jirsíkova 157, 285 09 Kácov

tel.: +420 601 346 039

<http://www.zamek-kacov.cz>

May Sat – Sun 9:00 – 12:00 13:00 – 16:00

June – September Tue – Sun 9:00 – 12:00 13:00 – 16:00





Do you want to experience the atmosphere of one of the most beautiful and most romantic **river confluences** in the country? Well, you can go to the village Soutice, roughly four kilometres from the dam of the water reservoir Švihov where the river Želivka flows into the river Sázava. They are like coffee and milk – golden-brown colour of Sázava and crystal-clear water of Želivka...

The beautifully renovated **castle in ZRUČ NAD SÁZAVOU** will welcome you early while you are on longer distance. In two guided tours, you can have a look at interiors of the local castle which has been expensively renovated by using European supporting funds. You can climb up the castle tower or visit the **Kingdom of dolls and teddy bears**. While in the

regional museum, you can familiarize with the exhibition **Od Verpánku k Baťovi**. This exhibition is devoted to development of shoemaking craft in the town. Children have the chance to enjoy the **historical-educational knight trail of Milota Kolowrat** in the castle moat or in the playground with the unique **ball line**.

Zámek Zruč nad Sázavou

Zámek 1, 285 22 Zruč nad Sázavou

tel.: +420 327 531 329

e-mail: infocentrum@mesto-zruc.cz

<http://www.mesto-zruc.cz>

April – September Mon – Sun 10:00 – 17:00

Now it is time to say goodbye to the central part of the Sázava region while visiting **Světlá nad Sázavou**, the town of glass and stone. Let us take a tour of the medieval underground,

the Church of St. Václav, castle with the park and museum Světlá, Town Hall, former hospital or the Jewish cemetery.

VLAŠIM REGION
KRAJ BLAŽNICKÝCH RYTÍŘŮ



Undoubtedly, another attractive place for tourists is **VLAŠIM**, the town located 20 kilometres from Benešov. Even the easy walk through the centre may become an interesting excursion of architectural styles. The town's history reaches back to 1318 when the castle above the Blanice river was mentioned for the first time. The Church of St. Jilji was built in the first half of the 16th century; the building of deanery and the old Town Hall refers to the Baroque style; the 19th century is represented by a former credit bank; the Hussite Church belongs to the modern style of the First Republic.

When visiting Vlašim, you cannot miss the local **castle park**; this is a green oasis of tranquillity amidst the rush of the town. It was founded in the last third of the 18th century by the Au-

erspergs. It was on the site of the former game park. Like the castle itself, it is also accessible for the wide public. You can get a tour either by yourselves or with a guide. You can get a journey into history by going through its winding paths. You can be guided for example by a legend of the giant Samson; you can go to the Chinese pavilion, the old castle or bath tub.

Turistické informační centrum Vlašim

tel.: +420 317 847 207

e-mail: info@vlasimskypark.cz

<http://www.vlasimskypark.cz>

Guided tours through the castle park are available during the season.



You will be definitely recommended visiting the museum called **MUSEUM PODBLANICKA** which has its branches in Vlašim castle, in Benešov and also in the village Růžkové Lhotice. The museum in Vlašim introduces exhibition **Zámecké Parky a Historie Zámku ve Vlašimi, S Přesnou Muškou – tradition of shooting and arming industry** as well as the long-term exhibition **Zrcadlo Minulosti** (mirror of the past). The unique view of the town is offered by the castle tower. The exhibition **Tajemství Sklepení** (secret cellars) invites you to the underground environment. There is an exhibition opened in the Benešov branch. It is dedicated to the history of Benešov region, artistic monuments of the region and the fine artists who worked there. If you are interested in ethnography, you can go to get some tour of the exhibition of folk clothing and textile, furniture, paintings on glass and sculptures. The exhibition **Náš Pluk** (our regiment) will lead you to the world of Benešov garrison at the turn of the 19th and 20th centuries.

Tour of the exhibition in Růžkovy Lhotice will lead you to the region of tones. It shows the region of Podblanicko as a musi-



cal phenomenon. During the time from 16th to 20th century, the region was related to extraordinary number of personalities of Czech and European music: Jan Dismas Zelenka, Josef Suk, Zdeněk Fibich, Richard Wagner, Gustav Mahler or Antonín Dvořák. Young Bedřich Smetana experienced his happiest times right in Růžkovy Lhotice. His family owned the local castle in the years 1835–1844.



Muzeum Podblanicka Vlašim

Zámek 1, 258 01 Vlašim

tel.: +420 317 842 927

e-mail: muzeumvlasim@iol.cz

muzeumvlasim@seznam.cz

<http://www.muzeumpodblanicka.cz>

Opening times:

March – June

July and August

September – December

Tues – Sun 09:00 – 12:00 and 13:00 – 16:00

Tues – Sun 09:00 – 12:00 and 13:00 – 17:00

Tues – Sun 09:00 – 12:00 and 13:00 – 16:00

Kondrac



The picturesque village Kondrac is situated at the distance five kilometres from Vlašim, at the foot part of the famous mount Blaník. The **Church of St. Bartoloměj** is situated in the village square; the church was built in the 12th century. Take a while for the tour. The ancient origin of the building is recalled by the Romanic body with two round-shaped towers. The Gothic body with sacristy was added in 1360. The altar and pulpit were taken from the church in the flooded village Dolní Královice. This village had to be sacrificed due to the water reservoir of Švihov.

There is the **parish museum** located near the church. It is the only one museum of this type in the Czech Republic. The museum provides authentic interior of a rectory from the turn of the 19th and 20th centuries. You are invited to visit residence of a village priest – you can find a huge oven, wooden cupboard, tiled stove or ancient bed right here. There is also good smell of beeswax, printing ink – and sounds of children's laughter! The

parish museum is full of life. You can go to the craft workshop and make a candle, handmade paper, batik scarf or glycerine soap. Or just walk in the herb garden with plants having a symbolic significance of the Church. There is also a small run-out for sheep and goats. Undoubtedly, these animals used to be an integral part of parish farm in those times.

If you decided to stay longer, you can enjoy hospitality of the local tourist **hostel U Blanických Rytířů**. There are 5 rooms with own bathrooms, including one room suitable for disabled persons. The hostel is equipped with a kitchen, general public room, public Internet, washing machine, depository and bicycle rental service. The **hostel of TJ Sokol Kondrac** is suitable for less demanding visitors, sportive camps and school trips. This hostel is located near the football pitch. The clubroom with fireplace and TV is on the ground floor. The **ski lift** is operated in the winter time when the snow condition is adequate.





Obec Kondrac
Kondrac 3, 258 01 Vlašim
tel.: +420 317 843 088
<http://www.kondrac.cz>

Farní muzeum
tel.: +420 724 873 251
<http://www.farnimuzeum.cz>

ubytovna U BLANICKÝCH RYTÍŘŮ
tel.: +420 602 388 381
<http://www.okoloblaniku.cz>



Dining – The **restaurant U Matoušků** is known throughout the region. This restaurant provides its guests with traditional Czech cuisine, including proper portions at a reasonable price.

The Kondrac is also a starting point for interesting trips around the neighbourhood – either on foot or by bike. For example, you can try out the route *Po Stopách Blanických Rytířů* (on footsteps of Knights of Blanice). Another destination may be the **geological exhibition of minerals of the region of Podblanicko** which is situated in the parking site near the village Krasovice under Velký Blaník. You will find 21 samples of minerals taken from the surrounding quarries, together with a description of their



composition. The exhibition is freely accessible and it is a part of the instructive trail *S Rytířem na Blaník*. This trail leads across the top of Velký Blaník to the village Louňovice pod Blaníkem.

It is only a short way from Louňovice pod Blaníkem to the **gold mine Roudný**. Do you want to know more? Just go on the instructive trail which will familiarize you with the history and functioning in the time line from the Middle Age to the 50th of the 20th century. Small visitors of the tour will be guided by knocker Ruda. The trail is freely accessible. It is more suitable for walking due to more demanding terrain.



VOTICE REGION

KRAJ BLÁZNICKÝCH RYTÍŘŮ





When you leave the Sázava river behind you and go to the South-west, you will come to the region which a writer Jan Herben called the Czech Siberia due to its cooler climate. There are many historical attractions and natural beauties. The town **VOTICE** is considered an imaginary gateway to them.

Walking around Votice starts in Comenius Square with **sculpture of the Virgin Mary** from the first half of the 18th century as well as the Town Hall from the year 1661. You can watch them while being at height – the **view point Václavka** in the tower of **Church of St. Václav**. The church belongs to the so-called **Vrtba circuit** which is stretched through the most sig-

nificant religious monuments in the town related to the Vrtba family, former owners of the Votice estate. It also includes a rectory, **Church of St. Francis of Assisi with the adjacent monastery area** as well as the **Chapel of the Holy Sepulchre** in the local cemetery which is a true copy of the Sepulchre of Jerusalem from the year of 1685. You may visit the Jewish cemetery with reconstructed ceremonial hall. Commented tours of the town Votice, Gallery of St. Francis, Jewish cemetery – provided by the Information Centre of Votice.



Město Votice

Komenského nám. 177, 259 01 Votice
tel.: +420 317 812 505
e-mail: infocentrum@votice.cz
<http://www.votice.cz>

The **PENSION U MODRÉ KOČKY** is situated opposite the church tower. It provides accommodation, dining, outdoor



seating area with the playground for children and the cellar with wines. Even the bikers who find the tip for a trip in the surrounding areas on the map Votická Kopretina containing nearly 200km of the recommended biking routes for both families with children and skilled bikers.



Masarykovo náměstí 343
Táborská 71
259 01 Votice
tel.: +420 739 562 404
+420 602 543 219

e-mail: modrakocka@atlas.cz
<http://www.votice-ubytovani.cz>



Votice Region

Interesting experiences are provided by the instructive trail **Kolem Votic za Poznáním**. It will take you to the village Lysá, the Chapel of St. Vojtěch, the villages Mysletice, Hory, Hostišov and to Polský Vrch. You will get familiarized with the history, legends and famous persons, in addition to information about flora and fauna of the Czech Siberia. Children will enhance the trip by funny tasks. The walking trail is eight kilometres long and includes the nine stops in total. It leads through easy terrain. It is a way of three hours on foot. You will see why the region is called Czech Siberia and you will also see on which hill the gallows were installed once in the past.



Fans of the nature should not miss the **NATURAL PARK DŽBÁNY-ŽEBRÁK** when in the Votice region. This park was founded in 1996. In the viewing point near the village Kaliště there is a beautiful view opening to the Church Chvojen, castle Konopiště, Klet' and Brdy. When the weather is bright, you can see Prague towers and the mountain Říp. The capital city may be seen also from the hill Polský Vrch. There is a lonely maple tree growing up here on the place where the municipal gallows used to be situated in the past.

There is the **EKO-CENTRE ČAPÍ HNÍZDO** located near the village Olbramovice, in the territory of the nature park Džbány-Žebrák. You can walk on the instructive trail leading through several different biotopes and exhibitions of both livestock and wildlife animals. Just visit the local small ZOO garden Labyrinth with injured birds from the surrounding area, otter, fox and wild boar.



Vrchotovy Janovice, Vojkov



While in Olbramovice, you can go further on conditioned or renewed old roads to the instructive trail **Po Stopách Sidonie Nádherné**. It will lead you to **VRCHOTOVY JANOVICE**, the village distant 8 kilometres from here.

The castle and park, which are included in the exhibitions of the National Museum in Prague, still have their charm given to them by the last aristocratic owner of the castle, Beautiful Sidonia from Borutín (1885–1950). The Baroness was a friend of significant persons of cultural life. She was the muse of painter Max Švabinský, poet Rainer Maria Rilke or journalist Karl Kraus.

Do not miss the unique historic collection of more than 150 bells accompanied by rings, voices of chimes and contemporary music.

Vrchotovy Janovice

tel.: +420 317 835 181, +420 724 412 256

e-mail: vrchotovy_janovice@nm.cz

May – August

Wed – Sun 9:00 – 12:00 and 13:00 – 17:00

September

Weekends and for pre-booked 9:00 – 12:00,
13:00 – 17:00



You can visit **ŠPEJCHAR VOJKOV** which lies just five kilometres from Vrchotovy Janovice. The huge Baroque building from the half of the 17th century was included in the castle which was formed up after renovation of the fortress with yard. The first mention of the fortress comes from the year of 1537. There is the brewery cellar preserved on the other side of špejchar (granary). It was used already in the 18th century, according to entries in the books. There is the sale exhibition of ceramics, porcelain, tiles and tiled stoves located in the granary. There are also wines of the significant Romanian producer Murfatlar Romania available right here. Products of these wine companies are prized by several international awards. You can test their high quality in some of the regular tasting courses. The granary is also animated by exhibitions, lectures, theatre and concerts.

Miličín, Jankov



The **VILLAGE MILIČÍN** lies in the direction South of Votice, in the heart of the Czech Siberia. Its dominant is the Church of the Nativity of the Virgin Mary, built by the Rosenbergs in the Gothic style in the years 1380–1384. It was rebuilt in Baroque style in 1754. Information of the history of the village, interesting facts and information of the surrounding areas can be found in the instructive trail of Čeněk Kraupner, a prominent citizen of Miličín (1872–1951). It will lead you to the nearby mount **Kalvárie** with Calvary and the Chapel of Lord Suffering or to the **Lion of Miličín** – the rock hill resembling the king of animals with its shape. The legend says that the lion is the fossilized guard of Blaník knights.



Trip to the **VILLAGE JANKOV** may also be surprisingly interesting. The village is situated in the east direction from Votice. On the day of 6 March 1645 there was one of the worst and bloodiest battles of the Thirty Years War on Czech territory. Swedish troops of General Lennart Torstensson defeated the imperial troops here. The battle of Jankov was a signal of the end of the war suffering. Treaty of Westphalia concluded in 24 October 1648 brought the definitive end to the suffering. This historic event is commemorated in the authentic environment by The freely accessible **memorial** unveiled in 1995 and also the instructive trail **Po Stopách Bitvy u Jankova** (on footsteps of the battle of Jankov). The march held in memory of the victims of the tragic incident takes place under the same name every year.

Ratměřice, Bystřice



The trail leads to the hill Habrovka where the famous battle ended with surrender of the imperial army. Starting in Hab-

rovka, you can also use another instructive trail leading to the **VILLAGE RATMĚŘICE** which was proclaimed a village of year 2010. The title was also awarded thanks to rich social life. Fictional character of a peculiar peasant Oneš whom you may meet on your trips in this village is meant as the integral part thereof. Just visit the local open-air gallery or the **museum of fire-fighters**. Go to the castle park to see two sequoias which are the largest exhibits of this kind in the Czech Republic.

Now you can walk to the nearby **village Odlochovice** by going through linden alley. While in the square, you may have a look at the small fire-fighting museum. You may get some refreshment in the **castle café** run by clients of the local Integrated Centre of Social Services. Although the castle is inaccessible, you can still walk in the park, see the gardening site and farm with domestic animals or you can also make up some product in the ceramic or fine art workshop.

The nearby located **village Libouň** with Romanic rotunda from the 13th century is definitely worth visiting too. It is a part of the church of St. Václav. The walls contain partly exposed original frescoes. You can visit the newly renovated castle and guest house to have snack, lunch or dinner.

You will see the entire region like in your hand if you accept an invitation to an overlooking flight. It is just about going to the airport in **Nesvačily**. This is the base for operators of small sport aircrafts and hot-air balloons. It is quite usual that you can get hungry after the flight – so you can stop in the neighbouring **BYSTRICE** to get fresh bread, cakes, pies or fancy breads of the local bakery that is open daily from 16 to 21 pm. And you shall also taste the popular ice cream in the inn U Hlaváčků.



Observation tower Špulka

When on the journey through the region, you shall not miss the new dominant – **OBSERVATION TOWER ŠPULKA** located on the top of Březák, just 14 kilometres from Benešov. It is open continuously for a voluntary admission fee. When you climb up 150 stairway steps, you will get the magnificent view of the wide surroundings. When the weather is nice,

you can see Krkonoše mountains. You may come to the view tower from Lbosín or Humenec. There is the 950 metres long instructive trail leading from Lbosín to the tower. The trail was built up by pupils of five regional kindergartens and primary schools. There is the stand with refreshments and souvenirs occasionally open at the tower.



Important contact information



ASSISTANCE FOR YOU



FIRE BRIGADE
150



POLICE 158



AMBULANCE 155

SOS

EMERGENCY
NUMBER 112

Medical emergency

Rudolf and Stefanie Hospital in Benešov
tel.: +420 317 756 111 – ústředna



ASSISTANCE FOR YOUR CAR

Verold Benešov, spol. s r.o.,

Na Červených vrškách 1490, 256 01 Benešov

Servis tel.: +420 317 723 411

SERVIS 24 – ÚAMK tel.: 1230

TRANSPORTATION www.jizdnirady.cz



Information on coach Schedule
tel.: +420 317 721 395, +420 900 144 444



Information on train Schedule
tel.: +420 840 112 113, www.cd.cz/spojeni



ASSISTANCE FOR YOUR BICYCLE

Cykloservis J. Břečka, Benešovská 506, Sázava

Sport Šefčík Prodejna LYŽE – KOLA, Ke Stadionu 2095, Benešov

Tomáš Trojáněk, Pavlíkova 1528, Benešov

CYKLO SANTÉ, U Pivovaru 2 304, Benešov

CYKLO-SPORT, Komenského náměstí 657, Votice

CYKLOŠVEC s.r.o., Na Potoce 225, Vlašim

Cyklosport NOVOTNÝ, Jílovská 262, Týnec nad Sázavou

BIKE SPORT 007, Červené Vršky 1594, Benešov

Jízdní kola Kučera, Lidická 1781, Vlašim

VELO FOX, Dr. E. Beneše 159, Bystřice

VELO SPORT Krupička, Na Bezděkově 2005, Benešov

tel.: +420 728 474 008

tel.: +420 606 425 200

tel.: +420 776 098 062

tel.: +420 603 834 728

tel.: +420 739 431 420

tel.: +420 317 844 116

tel.: +420 317 701 823

tel.: +420 317 722 152

tel.: +420 602 831 037

tel.: +420 317 793 416

tel.: +420 317 723 627

PARTNERS POSÁZAVÍ



POVOĐÍ VLTAVY



POSÁZAVÍ

www.posazavi.com

Published by Posázaví o.p.s., Zámek Jemniště 1, 257 01 Postupice
Text Jaroslava Tůmová

Photographs Jaroslav Pelíšek, David Kočí, Magdaléna Straková,
Martin Špoula, Bohumír Krampera, archiv Posázaví o.p.s.

Design and production by Pavel Fuksa – GraTypoPrint

PUBLICATION NOT DESIGNED FOR SALE
ISBN 978-80-87684-22-1